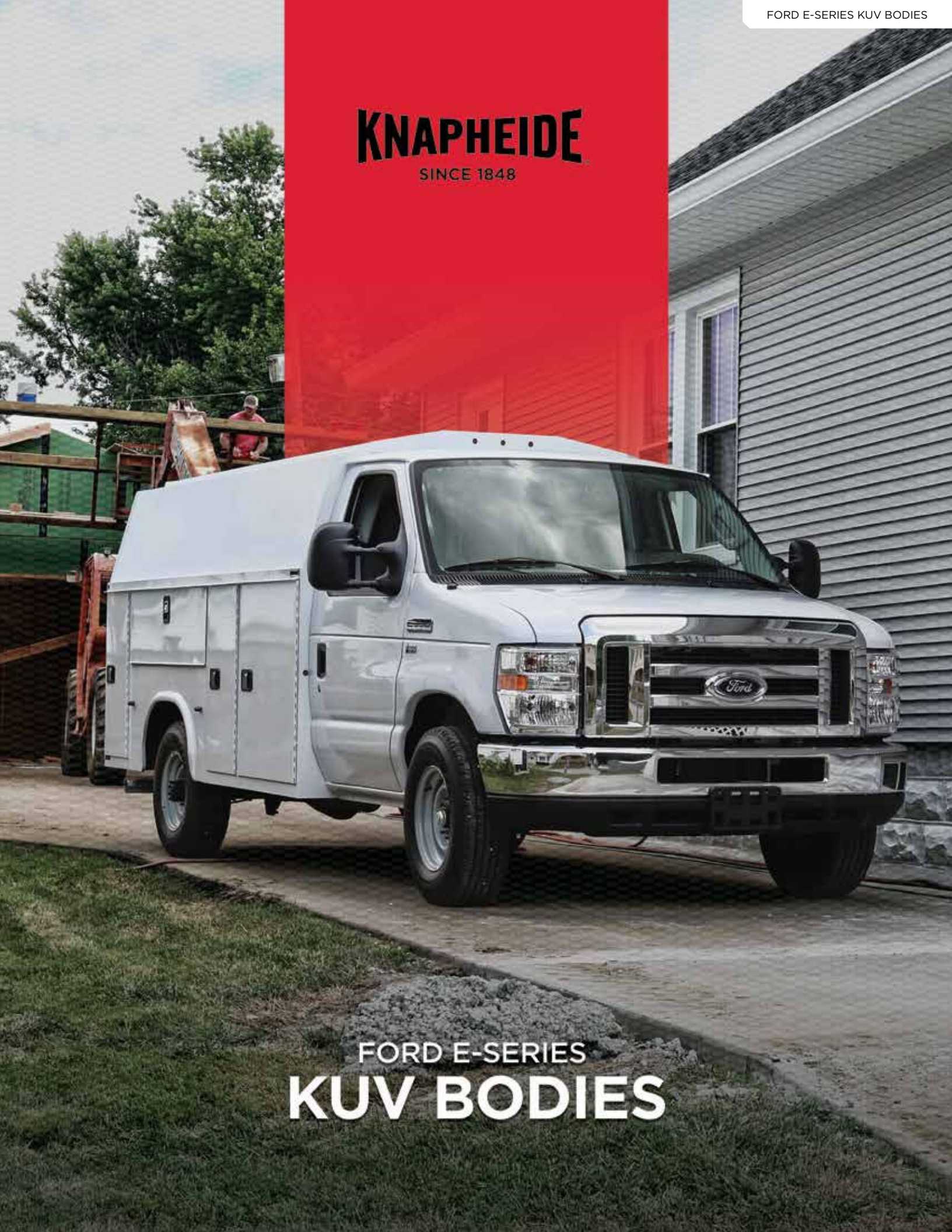


**KNAPHEIDE**  
SINCE 1848



FORD E-SERIES  
**KUV BODIES**



# KNAPHEIDE KUV BODIES



## KUV Bodies

The Knapheide KUV is available in multiple heights and lengths for different applications. It is designed to increase productivity and efficiency through better organization of parts and equipment for specialty contractors, including plumbers, HVACR technicians, electricians, and more.

No more looking for what you need — just grab and go!



## KNAPHEIDE UTILITY VAN

Working out of a Knapheide KUV keeps you organized and productive. Large perimeter bins are easy to access and keep your parts and tools separated into easy-to-manage spaces.

A spacious cargo storage area with corrugated steel floor for transporting drywall, larger tools, water heater, and oversized items.

## POPULAR VOCATIONS



CONSTRUCTION



PLUMBING



ELECTRICAL



HVACR

**A. DOUBLE paneled doors**

made of 20-gauge galvalume steel with expanding foam between panels for stiffness

**B. TWO CONDUIT CHUTES**

to transport copper pipes, PVC, and conduit

**C. AUTOMOTIVE-QUALITY, ROTARY-STYLE LATCHES**

make opening and closing easy

**D. ELECTRODEPOSITION PRIME-PAINT SYSTEM**

provides superior corrosion resistance

**E. FLAT PANEL SPACE**

provides rolling billboard to promote business

**F. INTEGRATED LED S/T/T AND B/U, LED STROBE OPTION\***

with (8) selectable patterns and built-in reflectivity for additional safety\*\*

\*Additional wire harness required for strobe lights  
\*\*Covered under 3-year limited warranty



\* Body may be shown with optional features.



**AERODYNAMIC WIND DEFLECTOR**

Mounted on body above cab

Standard on DL, DH, and SH models only



**CARGO AREA AND CONDUIT CHUTE CAPACITY**

10' in 129" bodies  
12' in 153" bodies

FEATURES NOT SHOWN

**COMPARTMENTS CAN BE LOCKED INDEPENDENTLY**  
for maximum security

**GRAB HANDLE**  
(inside rear right)

**TWO INTERIOR LED DOME LIGHTS**  
in cargo area with light switch inside the cargo doors

**REFINED ABS PARTITION**  
is equipped with a sliding cab access door and window. The door's slam latch can be locked from the cab and secured in either an open or closed position

COMPARTMENT FEATURES



**DOUBLE-SPRING OVER-CENTER RETAINER**  
on vertical compartment doors eliminate involuntary swing



**NEOPRENE DOOR SEALS**  
protect compartments from the weather



**MASTER LOCKING SYSTEM**  
for piece of mind — locks down all of the side compartments in one move



**CONTINUOUS STAINLESS STEEL HINGES**  
are pry-proof and corrosion-resistant

STANDARD SHELVING



**STREET AND CURB SIDE FRONT VERTICAL COMPARTMENTS**  
Two adjustable divider shelves and dividers, with a 250-lb. capacity



**STREET AND CURB SIDE FULL HEIGHT REAR VERTICAL COMPARTMENTS**  
One adjustable divider shelf and dividers, with a 250-lb. capacity



**CURB SIDE HORIZONTAL COMPARTMENT**  
One adjustable divider shelf and dividers, with a 250-lb. capacity





REQUEST A QUOTE

Visit [knapheide.com/quote](https://knapheide.com/quote) and fill out the form to receive a quote and additional product information.

POPULAR OPTIONS



POWER LOCKS



CODEABLE PADLOCK



UPPER SIDE GLASS  
*Available for Low and High Roof models. Not available for Ultra-Low models.*



POWER LIFTGATE  
*Not available on SRW models*



LED COMPARTMENT LIGHTING



MECHANICS VISE BRACKET  
*Vise sold separately*



REAR VISION CAMERA



ALUMINUM DRAWERS



PULL OUT TRAY



CORNER MOUNTED CARGO CRANE



SIDE ACCESS DOOR  
*Available for Low and High Roof models. Not available for Ultra-Low models.*



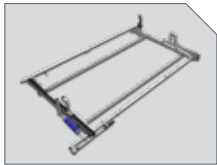
3 BOW LADDER RACK



REAR DOOR WINDOWS



CLASS V RECEIVER HITCH



DROP-DOWN LADDER RACK  
*Prime Design*



SIDE MOUNT LADDER RACK



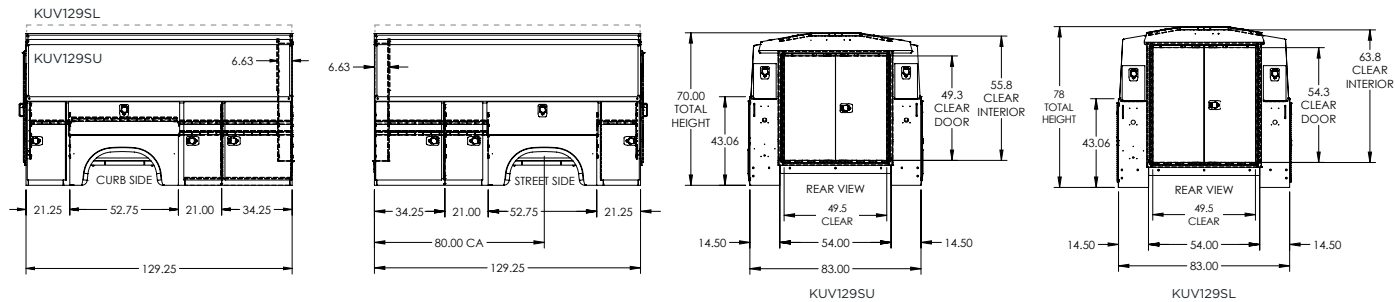
MODEL OPTIONS

KUV BODIES

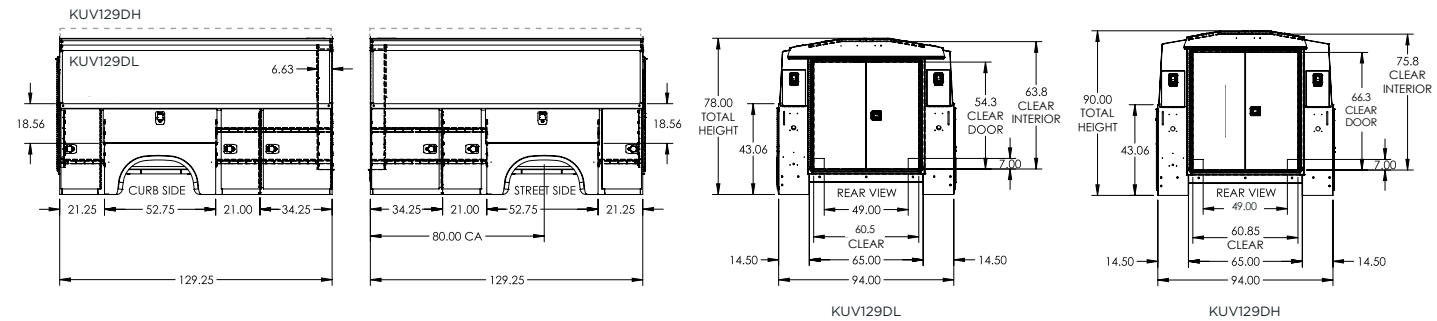
CHASSIS MODEL	WHEELBASE	BASE CHASSIS WEIGHT <sup>1</sup>	BODY MODEL	BULK CARGO AREA	TOTAL STORAGE	COMPARTMENT AREA	MOUNTED BODY WEIGHT <sup>2</sup>	CHASSIS GVWR	PAYLOAD <sup>3</sup>
E-350	138"	4,950 lb.	KUV129SU	265 cu. ft.	335 cu. ft.	70 cu. ft.	1,731 lb.	10,050 lb.	3,369 lb.
E-350	138"	4,950 lb.	KUV129SL	318 cu. ft.	388 cu. ft.	70 cu. ft.	1,873 lb.	10,050 lb.	3,227 lb.
E-350	138"	4,950 lb.	KUV129SH	403 cu. ft.	473 cu. ft.	70 cu. ft.	2,053 lb.	10,050 lb.	3,047 lb.
E-350	138"	5,225 lb.	KUV129DL	355 cu. ft.	425 cu. ft.	70 cu. ft.	2,047 lb.	11,500 lb.	4,228 lb.
E-350	138"	5,225 lb.	KUV129D20L	329 cu. ft.	425 cu. ft.	96 cu. ft.	1,973 lb.	11,500 lb.	4,302 lb.
E-350	138"	5,225 lb.	KUV129DH	422 cu. ft.	492 cu. ft.	70 cu. ft.	2,198 lb.	11,500 lb.	4,077 lb.
E-350	138"	5,225 lb.	KUV129D20H	396 cu. ft.	492 cu. ft.	96 cu. ft.	2,222 lb.	11,500 lb.	4,053 lb.
E-450	158"	5,512 lb.	KUV153DL	421 cu. ft.	506 cu. ft.	85 cu. ft.	2,347 lb.	14,000 lb.	6,141 lb.
E-450	158"	5,512 lb.	KUV153D20L	389 cu. ft.	506 cu. ft.	117 cu. ft.	2,382 lb.	14,000 lb.	6,106 lb.
E-450	158"	5,512 lb.	KUV153DH	500 cu. ft.	585 cu. ft.	85 cu. ft.	2,517 lb.	14,000 lb.	5,971 lb.
E-450	158"	5,512 lb.	KUV153D20H	468 cu. ft.	585 cu. ft.	117 cu. ft.	2,553 lb.	14,000 lb.	5,935 lb.

<sup>1</sup> Chassis weight calculated with 7.3L gas engine. Optional engines and other chassis may affect chassis weight.  
<sup>2</sup> Mounted body includes a mount kit, interior trim kit, and GG KnapLined step bumper.  
<sup>3</sup> Final payload calculation subject to chassis and body options.  
\*\*"S" model denotes single rear wheel with 14.5" deep compartments.  
\*\*\*"D" model denotes dual rear wheel with 14.5" deep compartments.  
\*\*\*"D20" model denotes dual rear wheel with 20" deep compartments.

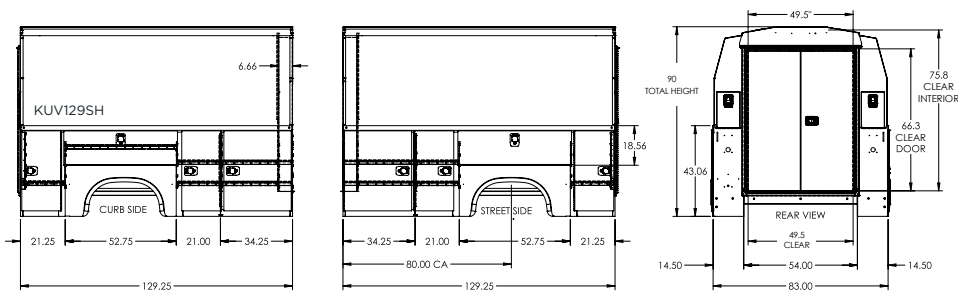
KUV129SU / KUV129SL



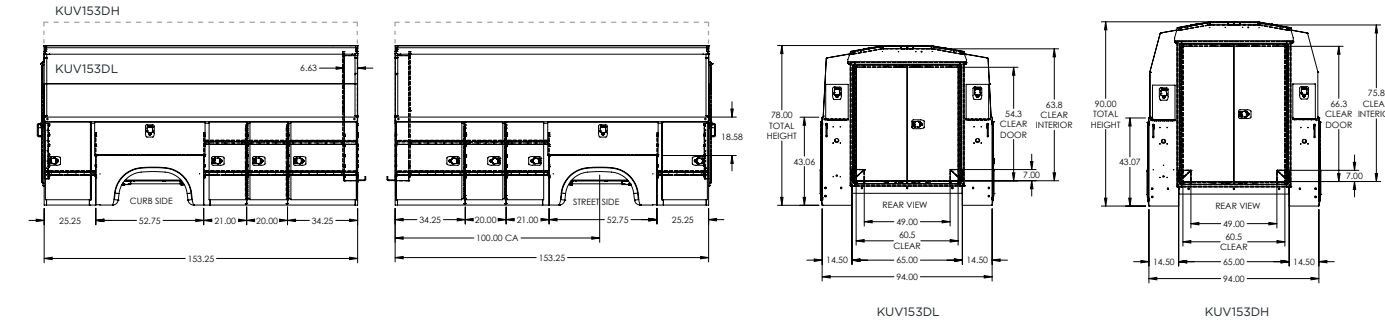
KUV129DL / KUV129DH



KUV129SH



KUV153DL / KUV153DH



REQUEST A QUOTE



Visit [knapheide.com/quote](https://knapheide.com/quote) and fill out the form to receive a quote and additional product information.



# COMMITMENT TO CORROSION RESISTANCE

Corrosion won't be a concern when you buy quality Knapheide products. To give you the best corrosion protection, we utilize a state-of-the-art, custom-designed, 12-step, SST cathodic electrodeposition finishing system, called "E-Coat."

It bonds prime paint to steel by an electroplating process to give you a superior coat of primer, resulting in better corrosion protection compared to spraying methods.

This system allows us to create products with the highest level of corrosion resistance available.



FOLLOW US  
LIKE US  
TAG US



## SIX YEAR, LIMITED TIME WARRANTY



**NO RUST  
THROUGH**



**DOOR HINGES  
WILL NOT FAIL OR  
COME OFF BODY**



**LATCHES AND LOCK  
CYLINDERS WILL NOT  
FAIL TO OPERATE**



**SHELVES WILL NOT  
BEND UNDER MAX.  
LOAD OF 250 LBS.**

TO LEARN MORE VISIT  
[www.knapheide.com/warranty](http://www.knapheide.com/warranty)



## NEVER SETTLE

If you are going to be a leader, it takes more than building a high-quality product. It means never being totally satisfied with that product, no matter how high quality it may be. It requires constant vigilance and a willingness to take a chance on something new. And it means exceeding expectations every time. As the industry changes, one thing never will—our commitment to making customers like you as productive and efficient as possible. We know you don't settle, and we don't either. That's why we want you never to settle for anything less than Knapheide on the back of your truck.

**KNAPHEIDE. NEVER SETTLE.**



The Knapheide Manufacturing Company  
1848 Westphalia Strasse | Quincy, IL 62305

**217-222-7131**

**[www.knapheide.com](http://www.knapheide.com)**