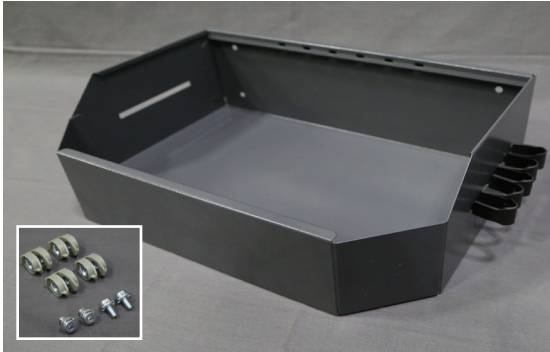


KNAPHEIDE VAN EQUIPMENT INSTALLATION INSTRUCTIONS FOR BIG STORAGE POCKET 33897895



DOCUMENT # 68184-01



33897682 HARDWARE KIT		
QTY	PART #	DESCRIPTION
4	33913838	M6 X 10 RATCHET HD SCREW
4	33897091	SPRUNG NUT PLASTIC / ESMK

The Big Storage Pocket can be fastened to the front or rear end panels. The storage pocket comes with mounting screws and nuts, and loops pre-installed on the side.

NOTE: Plastic tool loops are included but not pre-installed (see page 2).



Determine the desired location to mount the storage pocket. **NOTE:** Longer screws (not provided) are required to mount the storage pocket adjacent to a shelf.



Secure the storage pocket to the desired end panel in a horizontal position with the screws and nuts provided.



Plastic tool loops are included with the large storage pocket. Tool loops fit the slot on the right or left side of the big storage pocket.

This document must not be copied or communicated to a third party without the expressed authorization of The Knapheide Manufacturing Company.

FOR REF ONLY

Printed copies are uncontrolled.



Fold tool loop.



Insert notched ends of tool loop into slot horizontally.



Turn 90° and release.