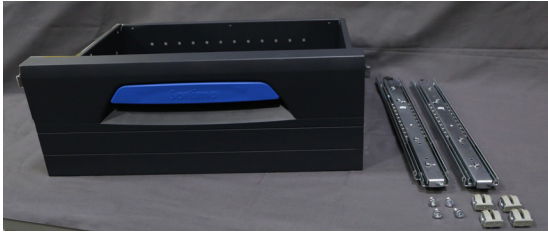


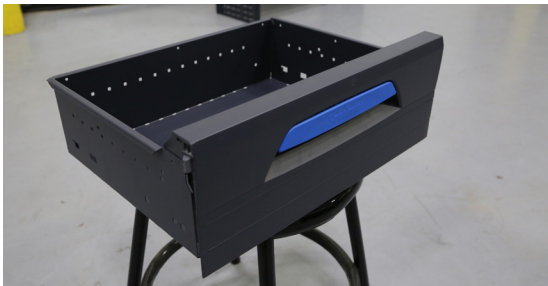
KNAPHEIDE VAN EQUIPMENT INSTALLATION INSTRUCTIONS DRAWER KITS DW42-6, DW42-10, DW44-6 & DW44-10



DOCUMENT # 68298-01



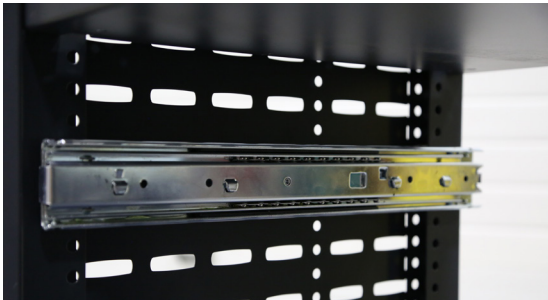
PARTS		
QTY	PART #	DESCRIPTION
1		Drawer of Choice
1	33897276	Drawer Slide 040 132 lb Left
1	33897277	Drawer Slide 040 132 lb Right
4	33897088	M6x10 Fillister HD Screw
4	33897091	Sprung Nut Plastic / ESMK



The 42-6 and 42-10 Drawer Kits can be mounted on all Wide-2 Shelf Staxx. The 44-6 and 44-10 Drawer Kits can be mounted on all Wide-4 Shelf Staxx.

NOTE: For both height 6 and 10 drawers, the telescopic slide will always be mounted at the 3rd hole up in the desired space.

NOTE: The telescopic slides are manufactured with a variety of tabs. Each set of tabs serves a different purpose. Drawer Suspension Tabs are meant to fit into notches in the body of the drawer itself. Slide Mounting Tabs are connected to the Shelf Staxx end panels.



NOTE: Prior to installing drawers or other accessories, be sure to allow enough room for the drawer to fit under or between other Staxx components. Drawers require 6 or 10 grid spaces regardless of drawer width.



Minimum Required Spacing	
Drawer	Holes
42-6 & 44-6	6
42-10 & 44-10	10

This document must not be copied or communicated to a third party without the expressed authorization of The Knapheide Manufacturing Company.

FOR REF ONLY

Printed copies are uncontrolled.



Determine the desired location for the Drawer Kit.

Fasten drawer slides to the Staxx end panels using the sprung nuts and M6 x 10 screws. Insert the sprung nuts into the slide mounting tabs. Then insert the M6 x 10 screws from the outside of the end panel into the sprung nuts and tighten. Repeat on both sides.

NOTE: Failure to mount the telescopic slides parallel will lead to misalignment of the drawer.



NOTE: When installed on the correct side, the drawer suspension tabs point UP.

After securely fastening the slides to the end panels, fully extend both slides and lower the drawer between the slides and onto the suspension tabs. Be sure to line up the 4 slots on the sides of the drawer with the 4 drawer suspension tabs-make sure all tabs protrude through the slots. Push down and pull out on the drawer so that it is fully seated on all suspension tabs on both telescopic slides.