

// KNAPHEIDE VAN EQUIPMENT

# FORD TRANSIT LOW ROOF PARTITION INSTALLATION INSTRUCTIONS



INTRODUCTION

The following instructions detail the procedure for installing a Knapheide ABS Partition in a Ford Transit Low Roof Van.

TABLE OF CONTENTS

Hardware..... 3

Partition Preparation ..... 4-7

Partition Installation ..... 8-15



The Knapheide Product Support Center  
1848 Westphalia Strasse | P.O. Box 7140 | Quincy, IL 62305

P: 217-592-5233 | [productsupport@knapheide.com](mailto:productsupport@knapheide.com)

Knapheide product warranty information can be found at

<https://www.knapheide.com/files/source/knapheide/Service/Knapheide-Warranty.pdf>

This document must not be copied or communicated to a third party without the expressed authorization of The Knapheide Manufacturing Company.  
FOR REF ONLY  
Printed copies are uncontrolled.

## // HARDWARE



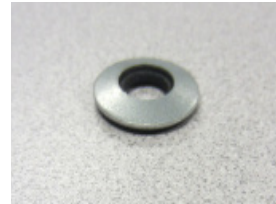
Rivnut Plus 5/16-18  
50903910 Qty. 7



Whiz Bolt  
5/16-18 x 1.00  
31268790 Qty. 4



Whiz Nut 1/4-20  
12030144 Qty. 20



Sealing Washer  
.43 x 1.00  
12051132 Qty. 3



Setscrew 5/16-18  
30708230 Qty. 3



Flanged Locknut  
5/16-18  
30708270 Qty. 3



Carriage Bolt 1/4-20  
30900780 Qty. 20



Nylon Spacer  
31836140 Qty. 3



M6-1.00 x 40 Bolt  
31568920 Qty. 2

**CAUTION:** Use of hardware other than provided, or alternative installation methods other than outlined herein, may void the product warranty. Fasteners should be tightened to called out specification or use Fastenal website torque calculator for any hardware not called out. Use caution when using air or battery operated tools.

## // PARTITION PREPARATION

### WARNING!



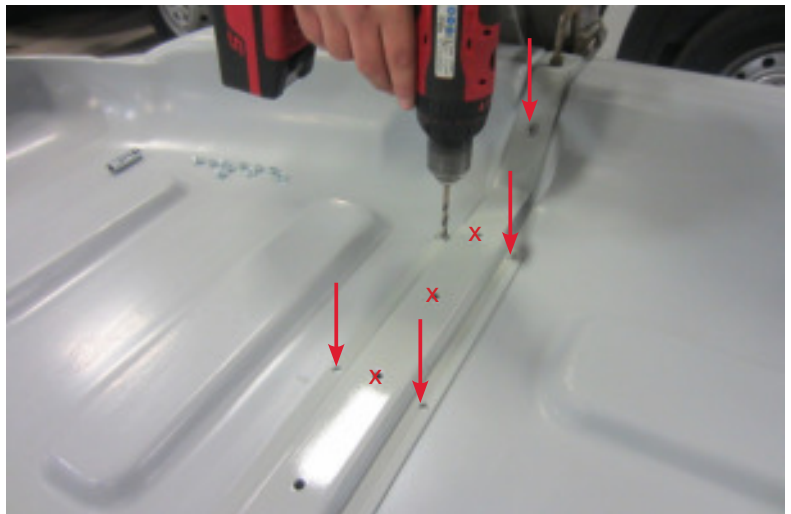
*Prior to drilling into any part of a vehicle, check behind and underneath drilling and mounting locations for electrical wire, fuel lines, brake lines, and other critical vehicle components. Adjust the drilling location as required to avoid these components. Failure to do so can result in death or serious injury in addition to impairing critical vehicle functions.*

Lay the partition cab side up on a large surface. Position the partition brace on the partition as shown and secure with clamps.



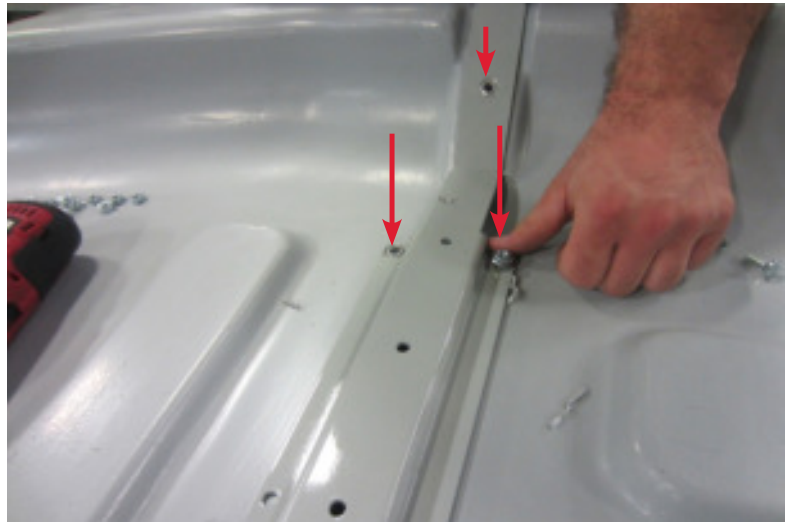
**Partition Shown Cab Side Up**

Use the brace as a template to drill 1/4" holes through the partition in the upper and lower holes of the brace. DO NOT drill holes through the middle holes of the brace.



## // PARTITION PREPARATION

Install carriage bolts from the back side in the three holes closest to the partition edge (right and left sides of partition). Secure with whiz nuts finger tight.



Use the brace as a template to drill 23/64" holes through the partition where shown and through the dimples along the outer edges.

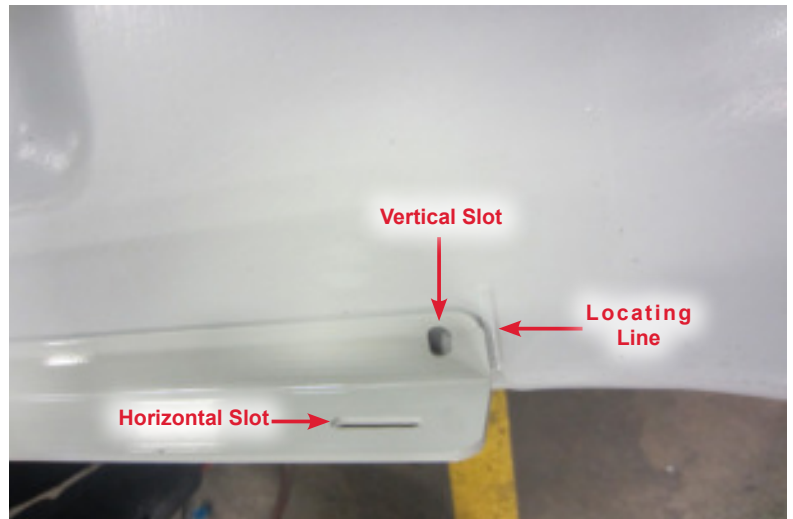


Place the "L" bracket along the bottom edge of the partition.



## // PARTITION PREPARATION

Position the bracket flush with the bottom edge of the partition between locating lines as shown. NOTE the direction of the slots in the bracket.



Use the “L” bracket as a template to drill 1/4” holes through the bottom edge of the partition. Install carriage bolts from the other side of the partition and secure the “L” bracket with the whiz nuts finger tight.



Install carriage bolts from the back side of the partition through the partition bracket holes. Secure with whiz nuts and tighten.



## // PARTITION PREPARATION

Once all the whiz nuts have been tightened to 6 ft.-lbs. (+/-1 ft.-lb.), the partition is ready to install in the van.





## // PARTITION INSTALLATION

### WARNING!

*Prior to drilling into any part of a vehicle, check behind and underneath drilling and mounting locations for electrical wire, fuel lines, brake lines, and other critical vehicle components. Adjust the drilling location as required to avoid these components. Failure to do so can result in death or serious injury in addition to impairing critical vehicle functions.*



### WARNING!

*For E-transits, review the Ford Body Builder Layout book and Body Equipment Mounting Manual for applicable no drill zones, fastener clearance information, electrical and sub-system routing information, etc. Note that care should especially be taken when drilling through the floor that proper clearance is maintained between the drill bit and the electrical components per these OEM documents.*

Carefully remove the fastener cover from the grab handle.



Remove the grab handle from the B-pillar.





## // PARTITION INSTALLATION

Remove the “D” rings from the bottom of the B-pillars.



Tip the top of the partition forward and carefully insert it into the van.



The upper lip of the partition must fit up and under the cab headliner.



## // PARTITION INSTALLATION

With the partition firmly in place against the B-pillars, headliner and floor, use the holes previously drilled in the partition as a template to mark hole locations on the B-pillars.



With the partition still firmly in place, mark the locations of the "L" bracket slots on the van floor from inside the cab.



Move the partition back to reveal the slot locations marked on the van floor. Drill 17/32" holes in the floor at the marked locations for 5/16-18 rivnuts.



## // PARTITION INSTALLATION

CAUTION! Use a collar on the drill bit whenever drilling through the floor. Set up for minimum penetration to get full diameter.



Install 5/16-18" Rivnuts in each hole.



Use a 1-1/8" hole saw to remove plastic trim at the marked hole locations on the B-pillars (3 places).



## // PARTITION INSTALLATION

Drill  $17/32$ " holes into the B-pillars in the marked hole locations (3 places).



Photo shows plastic trim removed and  $17/32$ " hole drilled through the B-pillar.



Install  $5/16$ " Rivnut Plus fasteners in each hole.





## // PARTITION INSTALLATION

Photo shows Rivnut Plus installed in B-pillar.



Install 5/16-18 setscrews in each Rivnut Plus and slide a spacer over each setscrew.



Re-install the partition.

Place sealing washers (12051132) over three 5/16-18 set screws and use an allen wrench to tighten the setscrew first.

Then tighten the whiz nut with the backup wrench.

Make sure the setscrew does not protrude out of the whiz nut.

Torque the 5/16-18 whiz nut to 12 ft.-lbs. (+/-1 ft.-lb.)



## // PARTITION INSTALLATION

Re-install the grab handle and fastener covering using M6-1.00 x 40 bolts, torque to 6 ft.-lbs. (+/-1 ft.-lb.).



From inside the cab, secure the “L” bracket to the floor with 5/16-18 whiz bolts.

Torque to 12 ft.-lbs. (+/-1 ft.-lb.).



Tighten the 1/4-20 whiz nuts that secure the partition to the “L” bracket.

Torque to 6 ft.-lbs. (+/-1 ft.-lb.).





## // PARTITION INSTALLATION

Make sure the weatherstrip fits over the edge of the partition.



Reposition the partition against the B-pillars. Re-install the “D” rings at the base of the B-pillars.





The Knapheide Product Support Center  
1848 Westphalia Strasse | P.O. Box 7140 | Quincy, IL 62305

**P: 217-592-5233 | [productsupport@knapheide.com](mailto:productsupport@knapheide.com)**