

// KNAPHEIDE VAN EQUIPMENT

GMC SAVANA / CHEVY EXPRESS PARTITION INSTALLATION INSTRUCTIONS



INTRODUCTION

The following instructions detail the procedure for installing a Knapheide ABS Partition in a GMC Savana or Chevy Express Van.

TABLE OF CONTENTS

Hardware.....	3-4
Partition Preparation	5-8
Van Preparation	9-13
Partition Installation.....	14-16



The Knapheide Product Support Center
1848 Westphalia Strasse | P.O. Box 7140 | Quincy, IL 62305

P: 217-592-5233 | productsupport@knapheide.com

Knapheide product warranty information can be found at

<https://www.knapheide.com/files/source/knapheide/Service/Knapheide-Warranty.pdf>

This document must not be copied or communicated to a third party without the expressed authorization of The Knapheide Manufacturing Company.

FOR REF ONLY

Printed copies are uncontrolled.

// HARDWARE



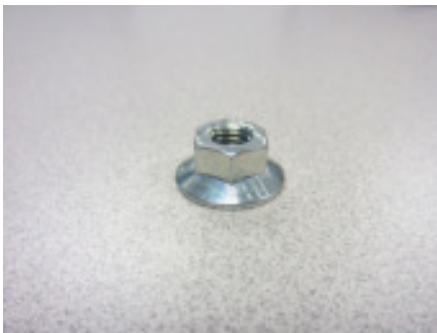
(12) Whiz Nut
1/4-20
Part# 12030144



(2) Set Screw
5/16-18 x 2-1/2
Part# 30708230



(8) Ribbed Riv-nut
1/4-20
Part# 57904110



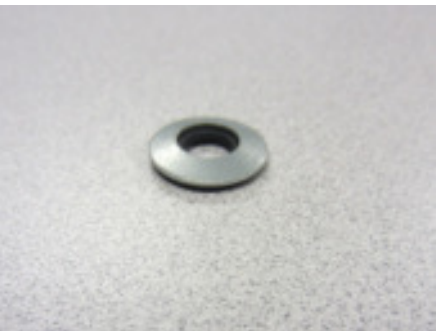
(2) Flanged Locknut
5/16-18
Part# 30708270



(12) Carriage Bolt
1/4-20 x 3/4
Part# 30900780



(2) Spacer
3/4 O.D. x 5/16 I.D. x 3/4
Part# 31836150



(8) Sealing Washer
.27 x .562
Part# 12051207



(3) Torx Screw
#14-10 x 3/4
Part# 12174074



(8) Hex Screw
1/4-20 x 1
Part# 12061081

CAUTION: Use of hardware other than provided, or alternative installation methods other than outlined herein, may void the product warranty. Fasteners should be tightened to called out specification or use Fastenal website torque calculator for any hardware not called out. Use caution when using air or battery operated tools.

// HARDWARE



(2) Rivnut Plus
5/16-18
Part# 50903910



(2) Sealing Washer
.43 x 1.00
Part# 12051132



(1) B-Pillar Brace
Part# 26256495



(1) Bottom Brace
Part# 26256511



(1) Bulkhead Bracket
Part# 26255299

CAUTION: Use of hardware other than provided, or alternative installation methods other than outlined herein, may void the product warranty. Fasteners should be tightened to called out specification or use Fastenal website torque calculator for any hardware not called out. Use caution when using air or battery operated tools.

// PARTITION PREPARATION



WARNING!

Prior to drilling into any part of a vehicle, check behind and underneath drilling and mounting locations for electrical wire, fuel lines, brake lines, and other critical vehicle components. Adjust the drilling location as required to avoid these components. Failure to do so can result in death or serious injury in addition to impairing critical vehicle functions.

Vans Equipped with a Sliding Door

Upper right corner of the partition must be trimmed for vans equipped with a sliding door.



Vans Equipped with a Sliding Door

Note the trim line on the partition.



// PARTITION PREPARATION

Vans Equipped with a Sliding Door

Use a reciprocating saw to trim the upper corner edge of the partition.



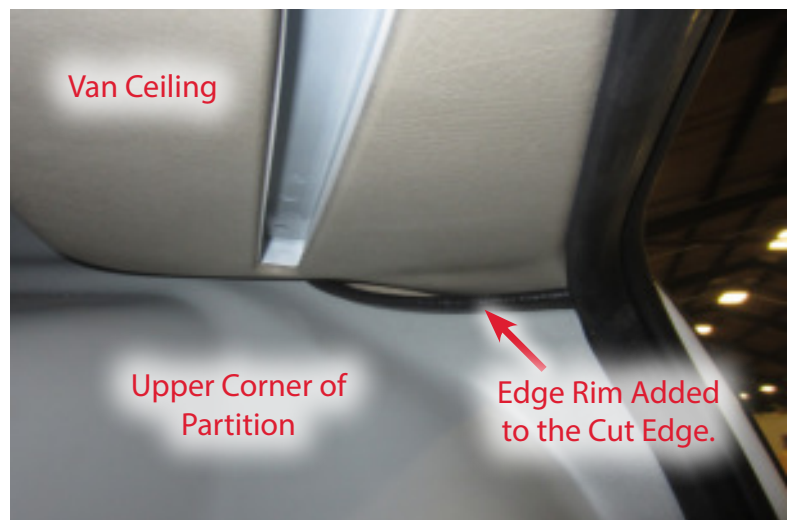
Vans Equipped with a Sliding Door

Prior to installing the partition in the van, install edge rim on the cut edge of the partition.



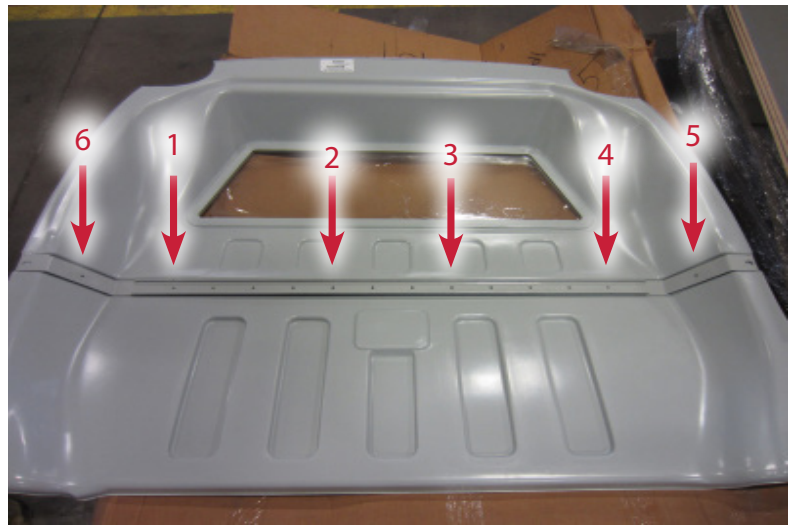
Vans Equipped with a Sliding Door

Place the partition cab side up and center the B-pillar brace in the molded channel. Use the brace as a template to drill 1/4" holes in the locations indicated.



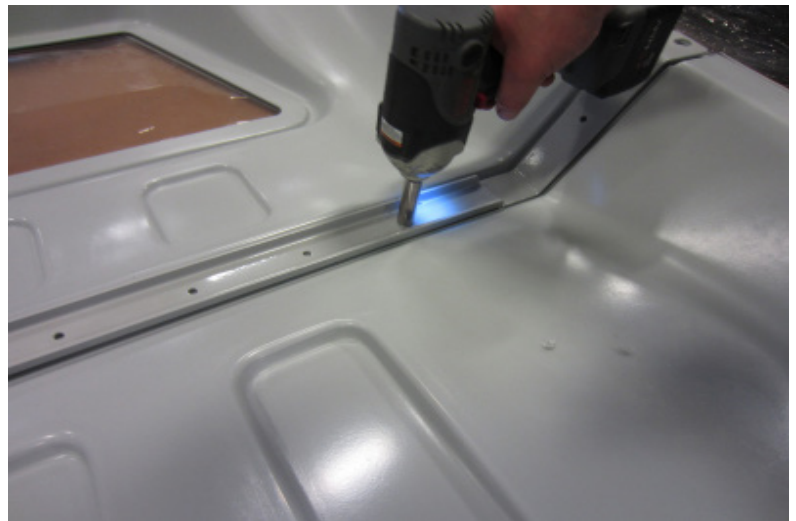
// PARTITION PREPARATION

Place the partition cab side up and center the B-pillar brace in the molded channel. Use the brace as a template to drill 1/4" holes in the locations indicated.



Install carriage bolts at locations 1 thru 4 (see previous photo) from the cargo side of the partition and secure with 1/4" nuts from the cab side.

Torque to 6 ft.-lbs. (+/-1 ft.-lb.).



Repeat the above process at hole locations 5 & 6.

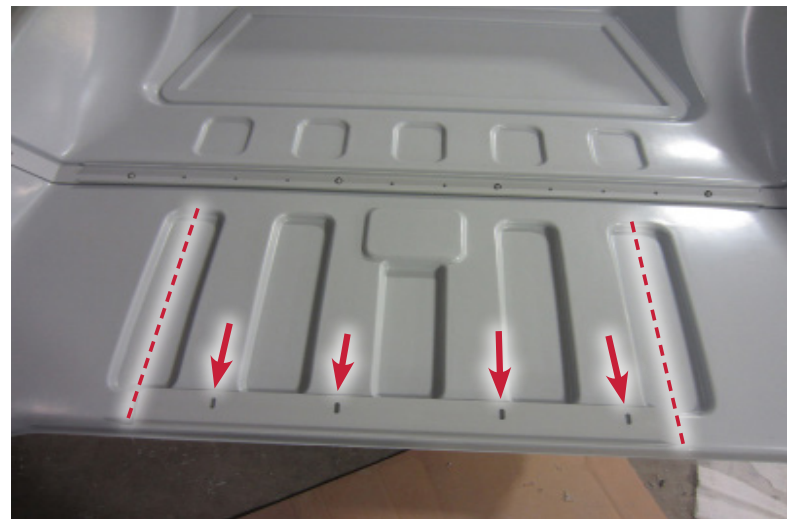


// PARTITION PREPARATION

Drill 1/2" clearance holes in each of the end slots of the brace.



Place the bottom bracket on the cab side of the partition and align the ends of the bracket with the center of the outer ribs of the partition as shown. The bottom flange of the bracket must be flush with the bottom of the partition. Drill 1/4" holes in the center of the vertical slots at the locations shown. Install carriage bolts from the cargo side and secure hand tight with nuts on the cab side.



// VAN PREPARATION



WARNING!

Prior to drilling into any part of a vehicle, check behind and underneath drilling and mounting locations for electrical wire, fuel lines, brake lines, and other critical vehicle components. Adjust the drilling location as required to avoid these components. Failure to do so can result in death or serious injury in addition to impairing critical vehicle functions.

Peel back the headliner to reveal existing holes in the roof bow. Enlarge the indicated holes with a 25/64" drill bit.



Install 1/4-20 Riv-nuts in the enlarged holes.



// VAN PREPARATION

Install the roof bracket to the roof bow with 1/4-20 hex bolts.

Torque to 6 ft.-lbs. (+/-1 ft.-lb.).



Peel back the door seal to allow the partition to fit snug against the B-pillars.



Place the partition in the van firmly against the B-pillars.



// VAN PREPARATION

Use the partition as a template to drill a $17/32$ " hole into the B-pillar.*

** Driver & passenger sides.*



Use the bottom flange on the partition as a template to drill $25/64$ " holes through the cab floor.



Slide the partition back from its position and lift the floor mat to reveal the holes. Install $1/4$ -20 Riv-nuts in the holes.



// VAN PREPARATION

Use a hole saw to remove a portion of the plastic B-pillar trim where the hole drilled in Step 2.6 is located.*



Install 5/16-18 Riv-nuts in the B-pillars.*



B-pillar plastic removed and Riv-nut installed.*

** Driver & passenger sides.*



// VAN PREPARATION

Install the setscrew.* Make sure the hex socket head of the screw is facing out.

** Driver & passenger sides.*



Slide a 3/4" nylon bushing over the set-screw.*

** Driver & passenger sides.*



// PARTITION INSTALLATION

Re-install the partition in the van snugly against the bushings on the setscrews.



Install a sealing washer and 5/16 flanged locknut on the setscrew.*

** Driver & passenger sides.*



Re-install the foam door seal.



// PARTITION INSTALLATION

Use an allen wrench and a box wrench to tighten the flanged nut.* Make sure the allen socket head setscrew does not protrude beyond the outer surface of the flanged locknut.

** Driver & passenger sides.*



Drill 1/8" holes through the three dimples in the top of the partition.



Secure the top of the partition with #14 Torx screws.



// PARTITION INSTALLATION

Secure the partition against the cab floor with 1/4-20 hex bolts.

Torque to 6 ft.-lbs. (+/-1 ft.-lb.).





The Knapheide Product Support Center
1848 Westphalia Strasse | P.O. Box 7140 | Quincy, IL 62305

P: 217-592-5233 | productsupport@knapheide.com