

// KNAPHEIDE VAN EQUIPMENT

# MERCEDES BENZ METRIS PARTITION INSTALLATION INSTRUCTIONS



INTRODUCTION

The following instructions detail the procedure for installing a Knapheide ABS Partition with in a Mercedes Benz Metris Van.

TABLE OF CONTENTS

Hardware..... 3

Partition Preparation .....4-7

Partition Installation..... 8-13



The Knapheide Product Support Center  
1848 Westphalia Strasse | P.O. Box 7140 | Quincy, IL 62305

P: 217-592-5233 | [productsupport@knapheide.com](mailto:productsupport@knapheide.com)

Knapheide product warranty information can be found at

<https://www.knapheide.com/files/source/knapheide/Service/Knapheide-Warranty.pdf>

This document must not be copied or communicated to a third party without the expressed authorization of The Knapheide Manufacturing Company.  
FOR REF ONLY  
Printed copies are uncontrolled.

## // HARDWARE



(10) Ribbed Riv-nut  
5/16-18  
Part# 21900246



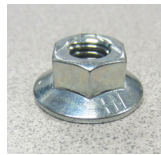
(6) Set Screw  
5/16-18 x 2-1/2  
Part# 30708230



(6) Spacer  
1.00 O.D. x 5/16 I.D. x 3/4  
Part# 32269170



(10) Sealing Washer  
.43 x 1.00  
Part# 12051132



(6) Flanged Locknut  
5/16-18  
Part# 30708270



(4) Hex. Head  
Serrated Flange Bolt  
5/16-18 x 1  
Part# 31268790



(10) Carriage Bolt  
1/4-20 x 3/4  
Part# 30900780



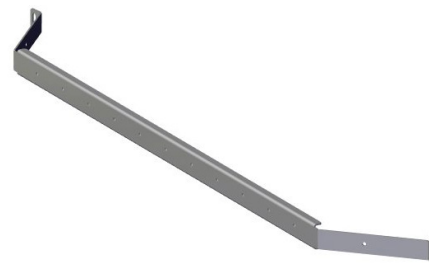
(12) Whiz Nut  
1/4-20  
Part# 12030144



(2) Button Head Screw  
1/4-20 x 3/4  
Part# 32269600



(1 ea.) Grab Handle Part# 26268821 &  
Grab Handle Bracket  
Part# 26268243



(1) B-Pillar Brace  
Part# 26265546

**CAUTION: Use of hardware other than provided, or alternative installation methods other than outlined herein, may void the product warranty. Fasteners should be tightened to called out specification or use Fastenal website torque calculator for any hardware not called out. Use caution when using air or battery operated tools.**

## // PARTITION PREPARATION



### WARNING!

*Prior to drilling into any part of a vehicle, check behind and underneath drilling and mounting locations for electrical wire, fuel lines, brake lines, and other critical vehicle components. Adjust the drilling location as required to avoid these components. Failure to do so can result in death or serious injury in addition to impairing critical vehicle functions.*

Clamp the partition brace to the partition with vice-grips as shown.



Use the brace as a template to drill 1/4" holes through the partition at the second hole locations from the outer edges on the right and left sides of the partition.





## // PARTITION PREPARATION

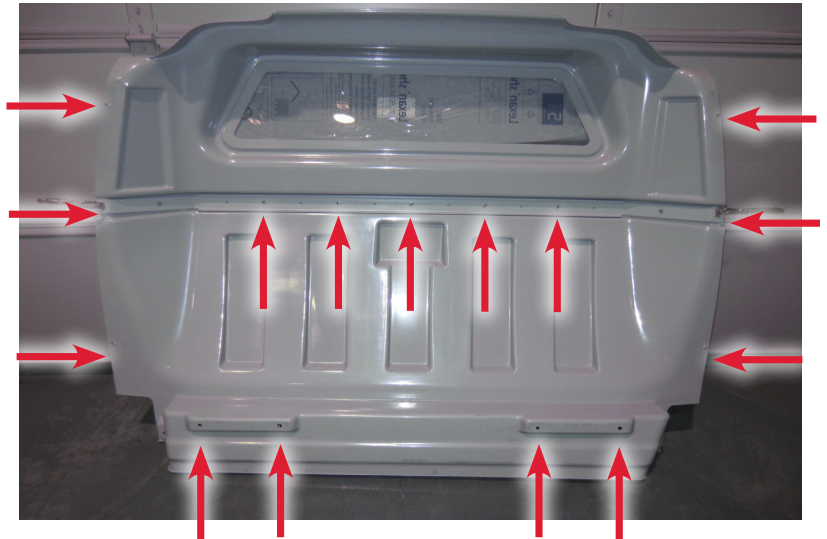
Secure the brace to the partition with 1/4-20 x 1 carriage bolts installed from the cargo side and 1/4-20 whiz nuts on the cab side.

Torque to 6 ft.-lbs. (+/-1 ft.-lb.).



Continue drilling 1/4" holes through the partition beginning with the middle hole location. Drill every other hole to the left and to the right. A total of (5) holes need to be drilled through the flat back section of the partition.

Also drill 11/32" holes (3 per side and 4 near the bottom) at the dimple locations where indicated.



Use the grab handle bracket as a template to mark hole locations on the molded section of the partition (curb side/cab side) as shown.



## // PARTITION PREPARATION

Remove the bracket to reveal the markings for hole locations.



Drill (5) 1/4" holes through the partition as shown.



Secure the bracket to the partition with (3) 1/4-20 carriage bolts and nuts. The bolts should be installed from the cargo side of the partition.

Torque to 6 ft.-lbs. (+/-1 ft.-lb.).



## // PARTITION PREPARATION

Install the grab handle with (2) 1/4-20 x 1 button head screws installed from the cargo side of the partition. Secure with whiz nuts on the cab side.

Torque to 6 ft.-lbs. (+/-1 ft.-lb.).

Tighten the screws with a 5/32" allen wrench and 1/4" socket.



Install plugs in the handle over the button head screws and protective nylon nut caps on all screw ends.





## // PARTITION INSTALLATION



### **WARNING!**

*Prior to drilling into any part of a vehicle, check behind and underneath drilling and mounting locations for electrical wire, fuel lines, brake lines, and other critical vehicle components. Adjust the drilling location as required to avoid these components. Failure to do so can result in death or serious injury in addition to impairing critical vehicle functions.*

Remove the D-rings located on the left and right side of the cargo area just behind the seats.



Position the partition in the cab as shown with the top tilted forward. Push the bottom of the partition forward until it is secured against the B-pillars.





## // PARTITION INSTALLATION

Partially remove the door seal from around the curb side door opening. Make sure the partition contacts the the B-pillar plastic trim.



Use the partition as a template to mark hole locations on the B-pillars and the lower backs of the seats.



Temporarily remove the partition from the van.



## // PARTITION INSTALLATION

At the previously marked hole locations, drill (3) 1" holes through the plastic trim only on each B-pillar.

*BE CAREFUL!! Drill only through the plastic trim. Seat belt mechanisms and wiring exist inside the B-pillars.*



*Do not drill through the B-pillar with the hole saw!* Note the mark made by the pilot bit of the hole saw.



*Install a drill bit collar on a 1/2" drill bit set to drill 1/4" deep.*

Drill 1/2" holes through the B-pillars where the pilot bit made a mark.





## // PARTITION INSTALLATION

Drill 1/2" holes through the back of the seat frames where previously marked hole locations are indicated.

*NOTE: Drill bit collar installed and set to drill 1/4" deep.*



Use a Riv-nut gun to set 5/16-18 riv-nuts in the 1/2" holes in the B-pillars.



Install 5/16-18 ribbed Riv-nuts in the back of the seat frames.



## // PARTITION INSTALLATION

Install setscrews (allen head facing out) into the Riv-nuts on each B-pillar. Install nylon spacers over each setscrew.



Re-install the partition in the cargo area behind the seats.



Install sealing washers over each setscrew.





## // PARTITION INSTALLATION

Install flange nuts on each setscrew. Use an open end wrench and allen wrench to tighten the flange nut. The end of the set-screw should be flush with the outer surface of the flange nut.



Secure the bottom of the partition to the backs of the seat frames with sealing washers and flange nuts.

Torque to 12 ft.-lbs. (+/-1 ft.-lb.).



Re-install the D-rings in original locations and the installation is complete.





The Knapheide Product Support Center  
1848 Westphalia Strasse | P.O. Box 7140 | Quincy, IL 62305

**P: 217-592-5233 | [productsupport@knapheide.com](mailto:productsupport@knapheide.com)**