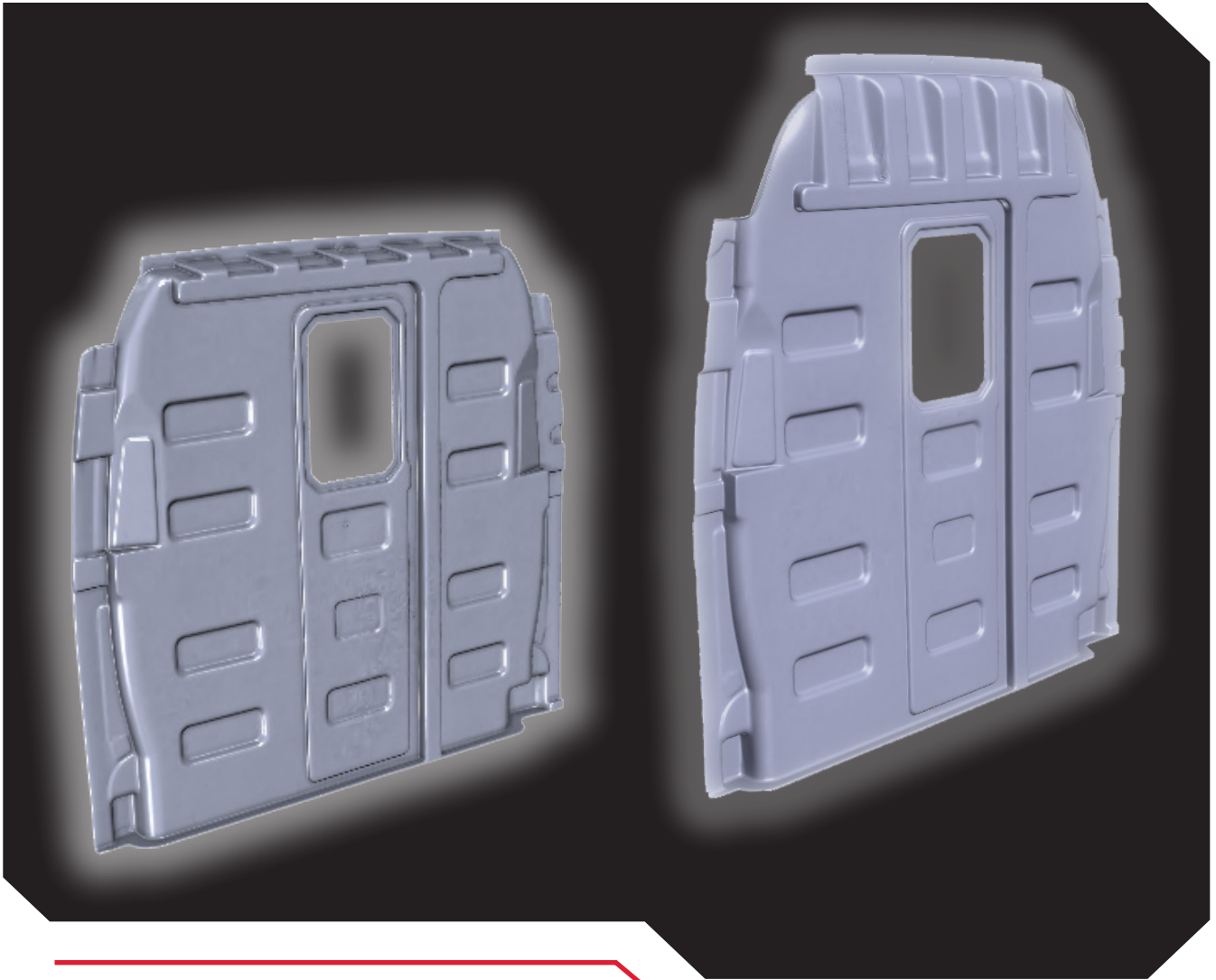


// KNPHEIDE VAN EQUIPMENT

# MERCEDES BENZ SPRINTER PARTITION INSTALLATION INSTRUCTIONS



# **INTRODUCTION**

The following instructions detail the procedure for installing a Knapheide ABS Partition in a Mercedes Benz Sprinter Van.

## **TABLE OF CONTENTS**

Hardware.....	3
Partition Preparation .....	4-8
Partition Installation.....	9-16



The Knapheide Product Support Center  
1848 Westphalia Strasse | P.O. Box 7140 | Quincy, IL 62305

**P: 217-592-5233 | [productsupport@knapheide.com](mailto:productsupport@knapheide.com)**

**Knapheide product warranty information can be found at**

**<https://www.knapheide.com/files/source/knapheide/Service/Knapheide-Warranty.pdf>**

This document must not be copied or communicated to a third party without the expressed authorization of The Knapheide Manufacturing Company.

**FOR REF ONLY**

Printed copies are uncontrolled.

# // HARDWARE



(2) Button Head Screw  
1/4-20 x 3/4  
Part# 32269600



(23) Carriage Bolt  
1/4-20 x 3/4  
Part# 30900780



(11) Whiz Bolt  
1/4-20 x 1  
Part# 12065082



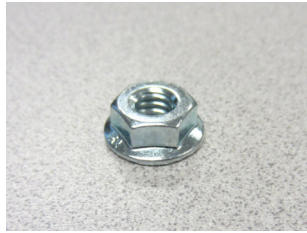
(4) Flange Bolt  
1/4-20 x 1-1/2  
Part# 31484070



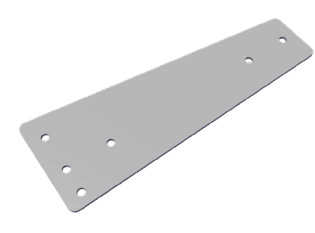
(15) Ribbed Riv-nut  
1/4-20  
Part# 57904110



(11) Sealing Washer  
.43 x 1.00  
Part# 12051132



(25) Whiz Nut  
1/4-20  
Part# 12030144



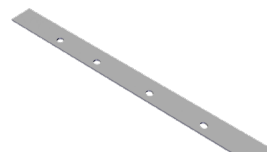
(1) Grab Handle Plate  
Part# 26268243



(1) L Bracket  
Part# 26262857



(1) B-Pillar Brace  
Part# 26265587



(1) Partition Shim  
Part# 26268227



(1) Grab Handle  
Part# 26268821

**If black foam blocks are not installed on the B-pillars of the van, they must be purchased from Mercedes-Benz and installed for the partition to fit properly.**



**CAUTION: Use of hardware other than provided, or alternative installation methods other than outlined herein, may void the product warranty. Fasteners should be tightened to called out specification or use Fastenal website torque calculator for any hardware not called out. Use caution when using air or battery operated tools.**

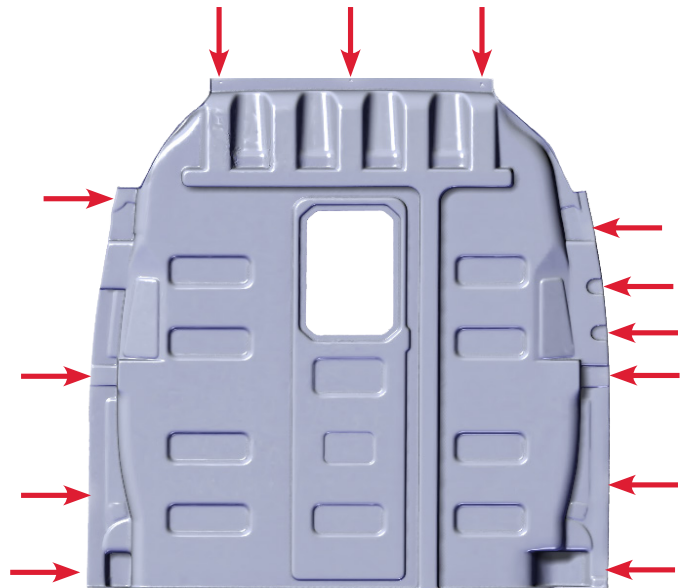
## // PARTITION PREPARATION

### WARNING!



*Prior to drilling into any part of a vehicle, check behind and underneath drilling and mounting locations for electrical wire, fuel lines, brake lines, and other critical vehicle components. Adjust the drilling location as required to avoid these components. Failure to do so can result in death or serious injury in addition to impairing critical vehicle functions.*

After removing the partition from its packaging, check for pre-drilled holes at these locations. If holes are not present, drill a 9/32" hole at each dimple location. Hole size may need to be increased during installation to align with holes in the sheet metal.



Example

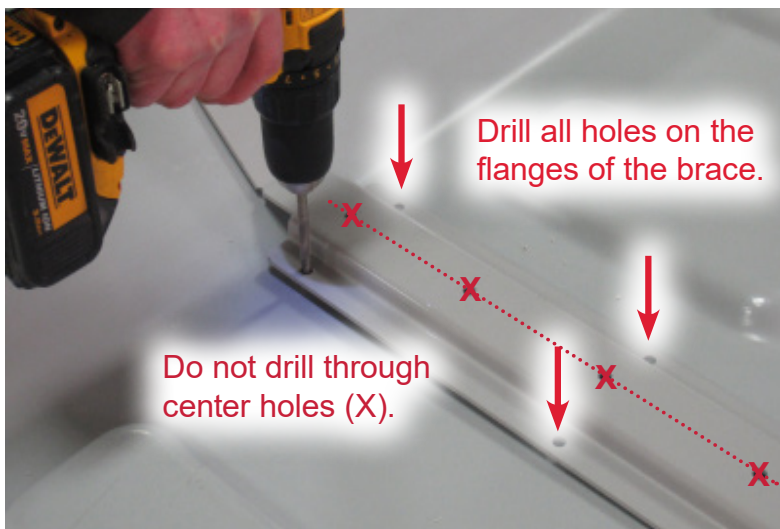


## // PARTITION PREPARATION

Flip the partition over and position the B-Pillar Brace (P/N 26265587) on the partition. Secure the brace with clamps at each end.



Use the B-Pillar Brace as a template to drill 1/4" holes as indicated.

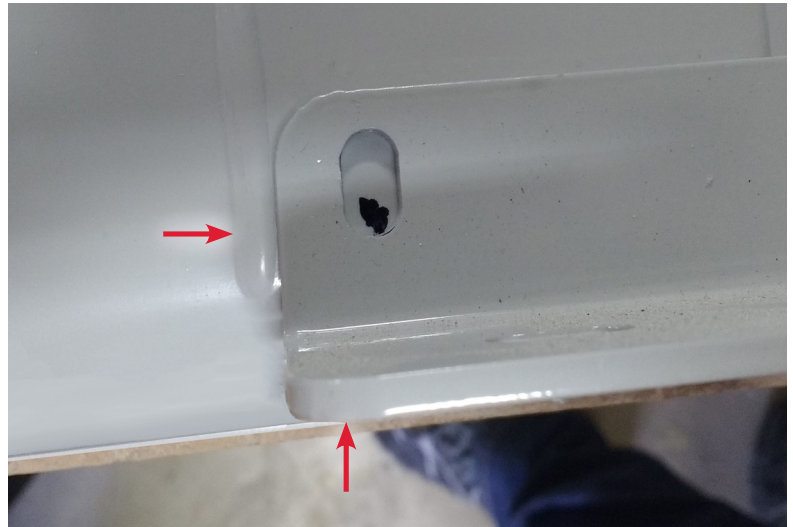


Insert 1/4-20 carriage bolts (P/N 30900780) through the partition from the cargo side and fasten the B-Pillar brace to the partition with 1/4-20 whiz nuts (P/N 12030144) from the cab side.



## // PARTITION PREPARATION

Align the L Bracket with the bottom of the partition. Position the L Bracket between the molded scribe lines near the bottom of the partition. Mark each hole in the L Bracket to be drilled.



Drill each 1/4" hole in the partition.



Example



## // PARTITION PREPARATION

Fasten the L Bracket to the cab side bottom of the partition with 1/4-20 carriage bolts and 1/4-20 whiz nuts. The whiz nuts should be installed on the cab side.



Position the Grab Handle Plate (P/N 26268243) into the recessed area on the cab side of the partition. Secure the plate with (3) 1/4-20 carriage bolts and 1/4-20 whiz nuts. The whiz nuts should be installed on the cab side.

Torque to 6 ft.-lbs.(+/-1 ft.-lb.)



Fasten the grab handle to the partition from the cargo side with (2) Button Head Screws (P/N 32269600) and .....



## // PARTITION PREPARATION

.....(2) whiz nuts (PIN 12030144) from the cab side.



Re-install (2) plastic hole covers in the screw holes of the handle.



The partition is now ready to be installed in the van.





## // PARTITION INSTALLATION

### WARNING!



*Prior to drilling into any part of a vehicle, check behind and underneath drilling and mounting locations for electrical wire, fuel lines, brake lines, and other critical vehicle components. Adjust the drilling location as required to avoid these components. Failure to do so can result in death or serious injury in addition to impairing critical vehicle functions.*

Prior to installing the partition in the van, remove both D-rings.



### IMPORTANT NOTICE:

THE PARTITION IS DESIGNED TO SIT ON TOP OF THE FACTORY SUBFLOOR (AS SHOWN).



## // PARTITION INSTALLATION

When a factory floor is not present, position the partition shim (P/N 26268227) as shown.



If the van is equipped with B-pillar trim (as shown), it must be modified before positioning the partition.



## // PARTITION INSTALLATION

The rear portion of factory installed B-pillar trim must be removed with a cutting wheel to expose the steel mounting surface of the B-pillar.

Remove the rubber door seal and pull back the B-pillar trim to check for items behind the trim that could be damaged by the cutting wheel.

Completely remove the plastic B-pillar trim, if necessary, to modify it outside of the vehicle.

Re-install the modified trim on the B-pillar.



The partition must attach directly to the B-pillar steel (**NOT to, or through the plastic trim**).



## // PARTITION INSTALLATION

Position the partition in the van. Tilt the top of the partition forward and slide the bottom firmly in place all around.

NOTE: The partition must fit firmly in place prior to marking mounting holes to be drilled in the van structures.

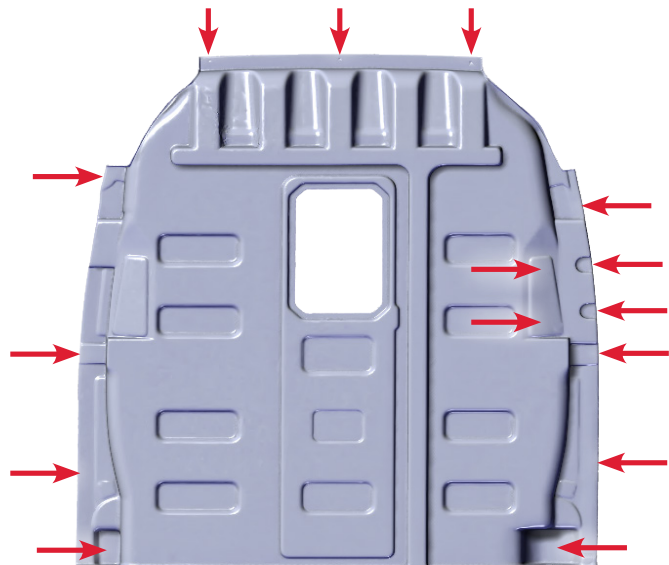


This photo shows the partition in a van not equipped with an OEM cargo subfloor.



Use the partition as a template to mark mounting hole locations all around.

Be sure to mark the mounting hole locations on the cab side floor.



## // PARTITION INSTALLATION



### **WARNING!**

*Prior to drilling into any part of a vehicle, install a drill bit collar on the drill bit at the minimal required cutting depth.*



Remove the partition from the van.

Use a 25/64" drill bit equipped with a drill bit collar to drill mounting holes for 1/4-20 riv-nuts in all the previously marked locations.



Install riv-nuts in all mounting hole locations.



## // PARTITION INSTALLATION

Drill pilot holes in marked locations through the subfloor only!

DO NOT drill through the metal floor of the van at this time!



In the pre-drilled locations, use a 1" hole saw to cut through the subfloor only.



Use a 25/64" drill bit equipped with a drill bit collar to drill mounting holes through the metal van floor for 1/4-20 riv-nuts.

Install (4) 1/4-20 ribbed riv-nuts in the van floor..



## // PARTITION INSTALLATION

Reposition the partition in the van as done previously.



Secure the partition to the van at both B-Pillars and across the roof with 1/4-20 x 1" flange bolts and sealing washers.

Torque to 6 ft.-lbs.(+/-1 ft.-lb.)



Secure the partition to the van at floor with 1/4-20 x 1-1/2" flange bolts (P/N 31484070) and sealing washers.

Torque to 6 ft.-lbs.(+/-1 ft.-lb.)



## // PARTITION INSTALLATION

Re-install both cargo D-rings.



Low roof partition installation complete.



High roof partition installation complete.







The Knapheide Product Support Center  
1848 Westphalia Strasse | P.O. Box 7140 | Quincy, IL 62305

**P: 217-592-5233 | [productsupport@knapheide.com](mailto:productsupport@knapheide.com)**