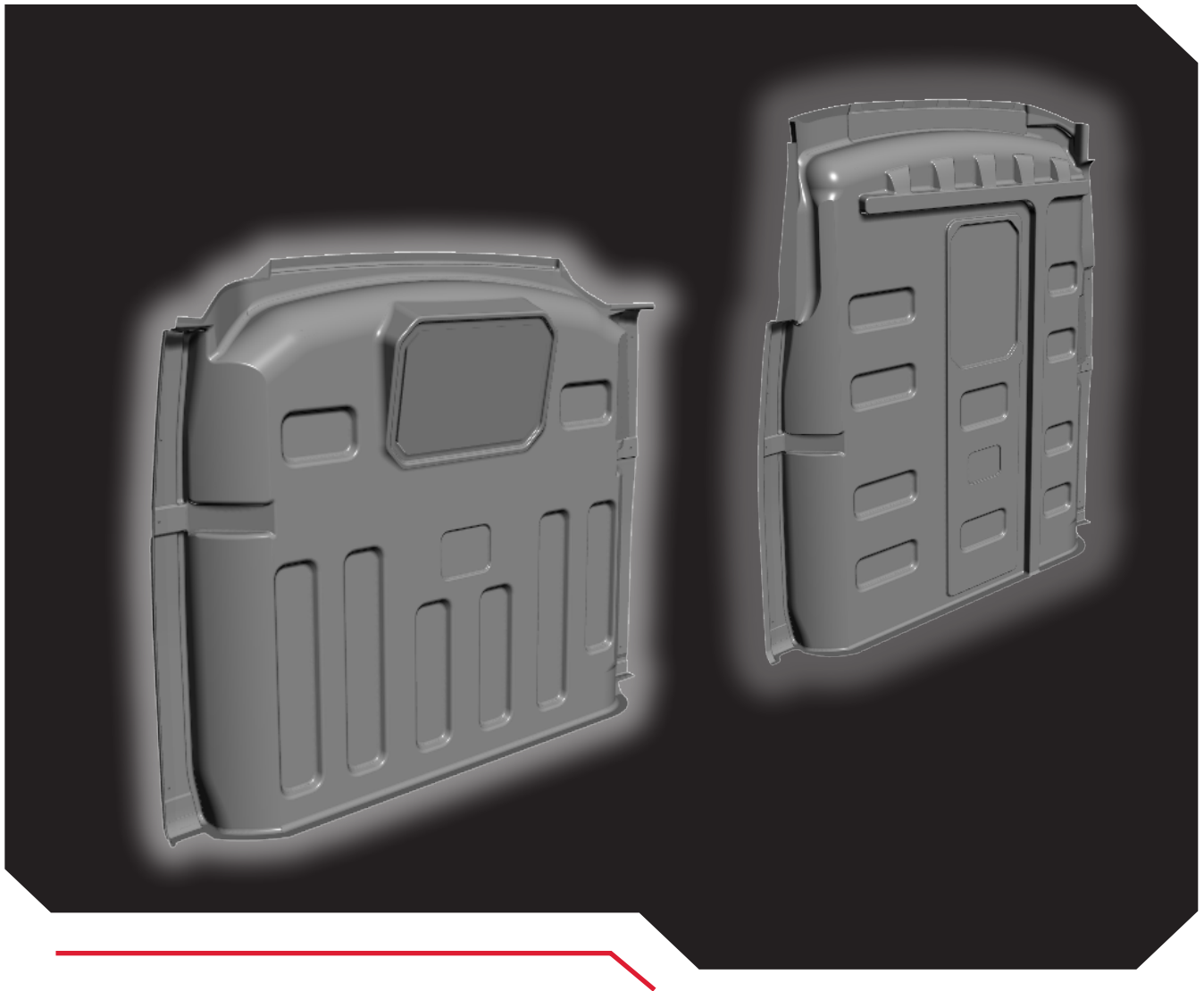


// KNAPHEIDE VAN EQUIPMENT

NISSAN NV CARGO VAN PARTITION INSTALLATION INSTRUCTIONS



INTRODUCTION

The following instructions detail the procedure for installing a Knapheide ABS Partition in a Nissan NV Cargo Van.

TABLE OF CONTENTS

Hardware.....	3
Partition Preparation	4-9
Partition Installation.....	10-26



The Knapheide Product Support Center
1848 Westphalia Strasse | P.O. Box 7140 | Quincy, IL 62305

P: 217-592-5233 | productsupport@knapheide.com

Knapheide product warranty information can be found at

<https://www.knapheide.com/files/source/knapheide/Service/Knapheide-Warranty.pdf>

This document must not be copied or communicated to a third party without the expressed authorization of The Knapheide Manufacturing Company.

FOR REF ONLY

Printed copies are uncontrolled.

// HARDWARE



(2) Button Head Screw
1/4-20 x 3/4
Part# 32269600



(21) Carriage Bolt
1/4-20 x 3/4
Part# 30900780



(9) Flange Bolt
1/4-20 x 1
Part# 12065082



(4) Flange Bolt
1/4-20 x 1.25
Part# 12065074



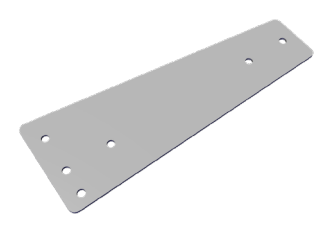
(13) Ribbed Riv-nut
1/4-20
Part# 57904110



(13) Sealing Washer
.43 x 1
Part# 12051132



(23) Whiz Nut
1/4-20
Part# 12030144



(1) Grab Handle Plate
Part# 26268243



(1) L Bracket
Part# 26262857



(1) B-Pillar Brace
Part# 26265686



(1) Grab Handle
Part# 26268821

CAUTION: Use of hardware other than provided, or alternative installation methods other than outlined herein, may void the product warranty. Fasteners should be tightened to called out specification or use Fastenal website torque calculator for any hardware not called out. Use caution when using air or battery operated tools.

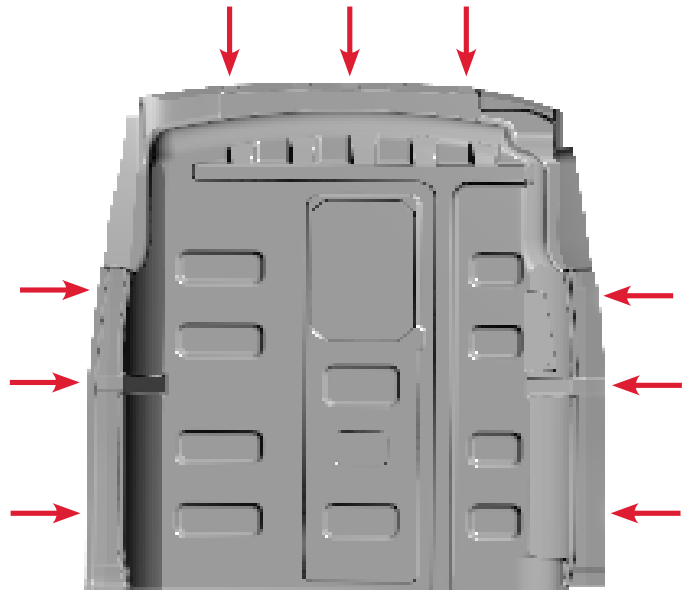
// PARTITION PREPARATION

WARNING!



Prior to drilling into any part of a vehicle, check behind and underneath drilling and mounting locations for electrical wire, fuel lines, brake lines, and other critical vehicle components. Adjust the drilling location as required to avoid these components. Failure to do so can result in death or serious injury in addition to impairing critical vehicle functions.

Position the partition cargo side up and drill 5/16" holes through all the dimples in locations indicated.



Example



// PARTITION PREPARATION

Example



Use the B-Pillar Brace as a template to drill holes as indicated.



Example

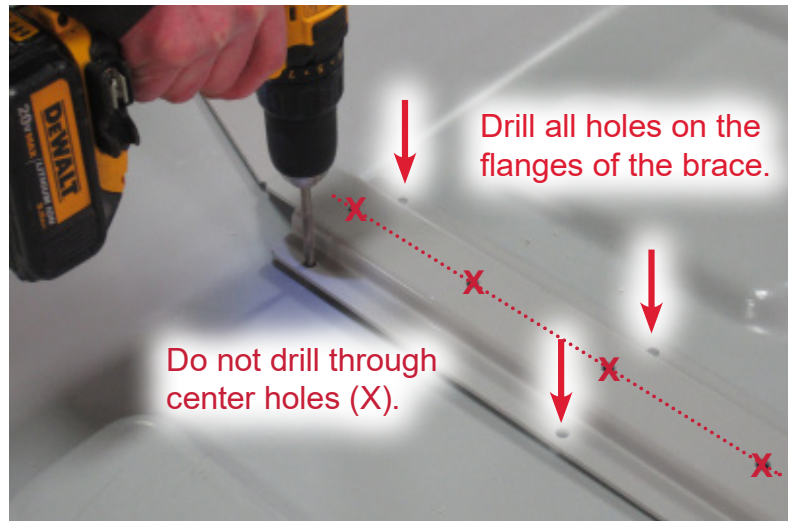


// PARTITION PREPARATION

Flip the partition over and position the B-Pillar Brace (P/N 26265686) on the partition. Secure the brace with clamps at each end. Drill holes at each end where indicated.



Use the B-Pillar Brace as a template to drill holes as indicated.

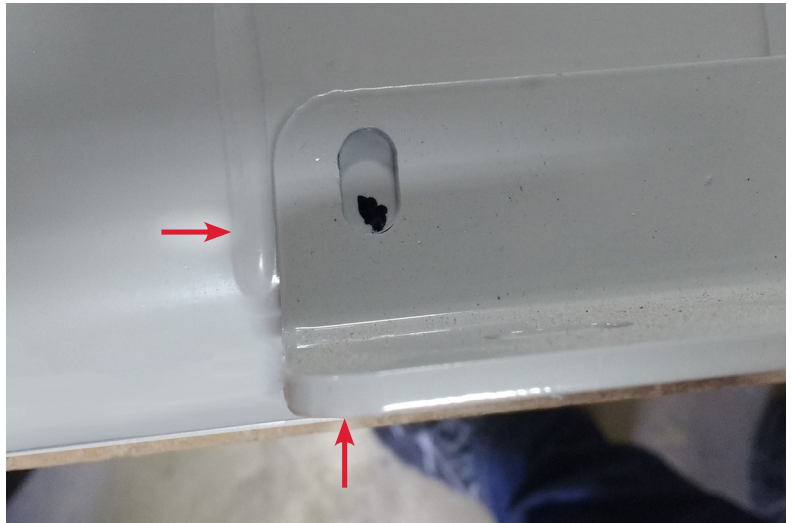


Insert 1/4-20 Carriage Bolts (P/N 30900780) through the partition from the cargo side and fasten the B-Pillar Brace to the partition with 1/4-20 Whiz Nuts (P/N 12030144) from the cab side.



// PARTITION PREPARATION

Align the L Bracket (P/N 26262857) with the bottom of the partition. Position the L Bracket between the molded scribe lines near the bottom of the partition. Mark each hole location to be drilled.



Drill 1/4" holes through the partition in each location.



Example



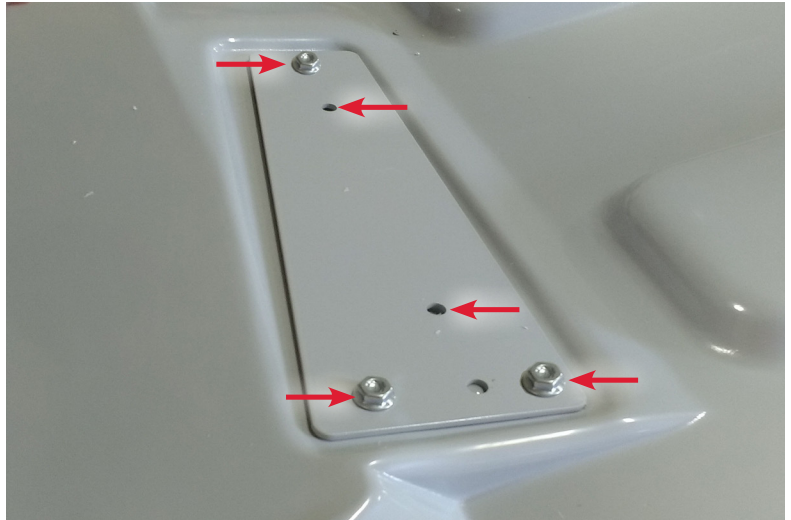
// PARTITION PREPARATION

Fasten the L Bracket to the cab side bottom of the partition with 1/4-20 Carriage Bolts and 1/4-20 Whiz Nuts. The Whiz Nuts should be installed on the cab side and only hand tightened.



Position the Grab Handle Plate (P/N 26268243) into the recessed area on the cab side of the partition. Use the plate to drill 1/4" holes through the partition where indicated. Secure the plate with (3) 1/4-20 Carriage Bolts and 1/4-20 Whiz Nuts. The Whiz Nuts should be installed on the cab side.

Torque to 6 ft.-lbs. (+/-1 ft.-lb.).



Fasten the Grab Handle (P/N 26268821) to the partition on the cargo side with (2) Button Head Screws (P/N 32269600) and



// PARTITION PREPARATION

.....(2) Whiz Nuts (1203144) on the cab side.



Re-install (2) plastic hole covers in the screw holes of the handle.



The partition assembly is now ready to be installed in the van.



// PARTITION INSTALLATION



WARNING!

Prior to drilling into any part of a vehicle, check behind and underneath drilling and mounting locations for electrical wire, fuel lines, brake lines, and other critical vehicle components. Adjust the drilling location as required to avoid these components. Failure to do so can result in death or serious injury in addition to impairing critical vehicle functions.

NOTE !

All steps marked with an asterisk () must be performed for both the passenger and driver sides.*

Use a small screwdriver to carefully open the plastic covers on the OEM grab handle.

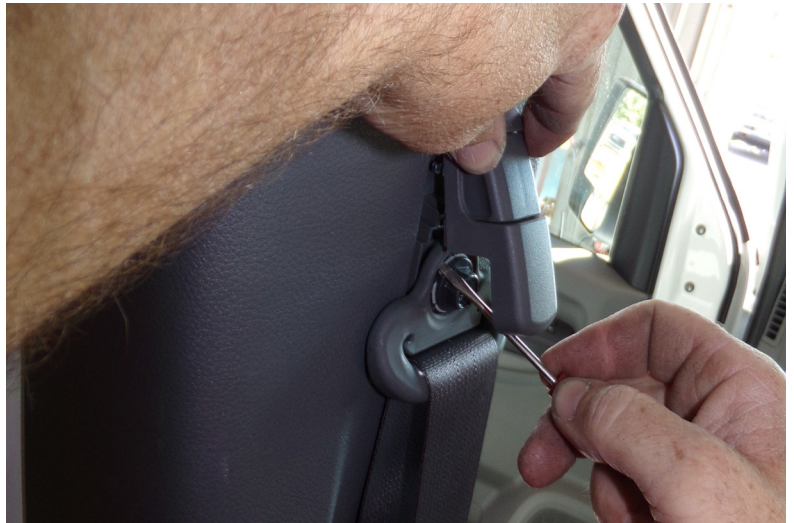


Remove the grab handle retaining bolts and the grab handle.



// PARTITION INSTALLATION

* Use a small screwdriver to carefully pry the release handle away from the seat belt adjuster.



* Remove the seat belt retaining bolts from the B-Pillars.



* Use a small screwdriver to pry out the plastic plug at the top of the B-Pillar covers.



// PARTITION INSTALLATION

* Remove the cover retaining bolts.



* Remove the upper B-Pillar covers.



* Pull back the seat belt retaining bolt covers at the bottom of the B-Pillars.



// PARTITION INSTALLATION

* Remove the seat belt retaining bolts.



Loosen the sliding door threshold retaining screws and lift the threshold slightly.



* Also loosen the cab door threshold retaining screws and lift the threshold slightly.



// PARTITION INSTALLATION

* Carefully remove the lower B-Pillar covers.



* Remove the retaining clip from the plastic seat belt adjuster.



* Remove the plastic seat belt adjuster.

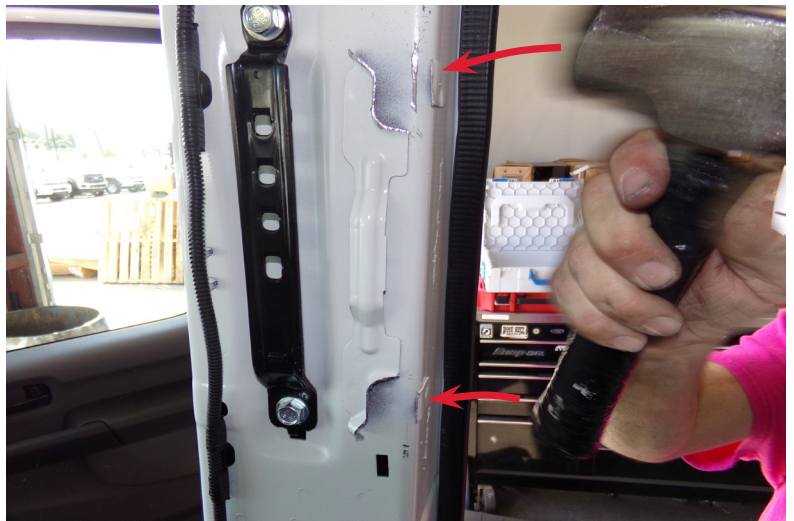


// PARTITION INSTALLATION

Cut away the two metal mounts for the grab handle with a reciprocating saw.



Lightly tap the the remaining welded tabs of the metal mounts along the door opening with a hammer to flatten them against the B-Pillar.



Touch up all exposed surfaces with paint to protect them from corrosion.

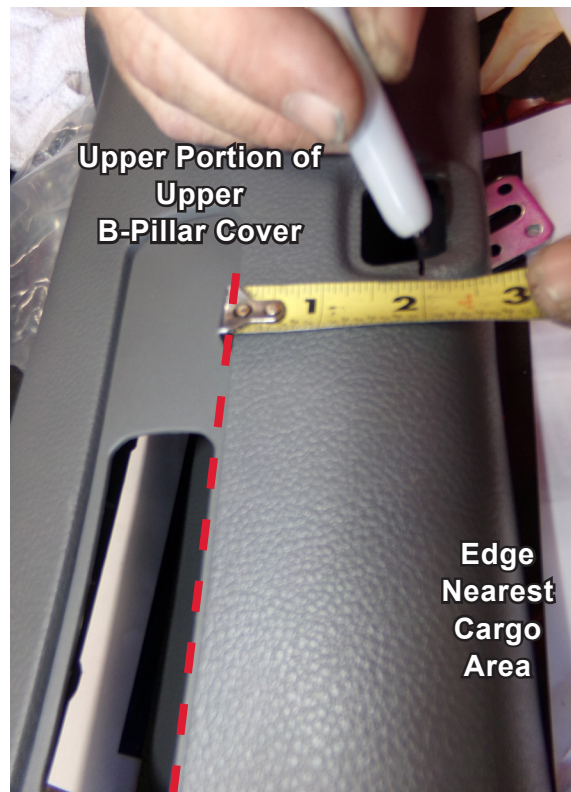


// PARTITION INSTALLATION

* Remove the plastic foam from the back side of the B-Pillars.



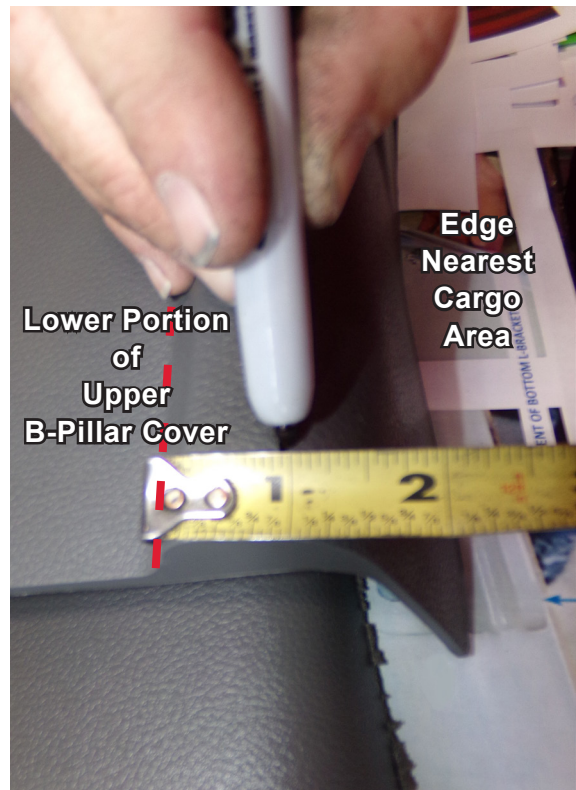
* Mark a line on the upper portion of the upper B-Pillar cover 2" from the molded seat belt slot.



**Reference: Upper B-Pillar Cover
(Passenger Side)**

// PARTITION INSTALLATION

* Mark a line at the bottom of the upper B-Pillar covers 1" from the molded rib.



* Apply masking tape to the upper B-Pillar covers as a guide for trimming away the edge nearest the sliding door.



// PARTITION INSTALLATION

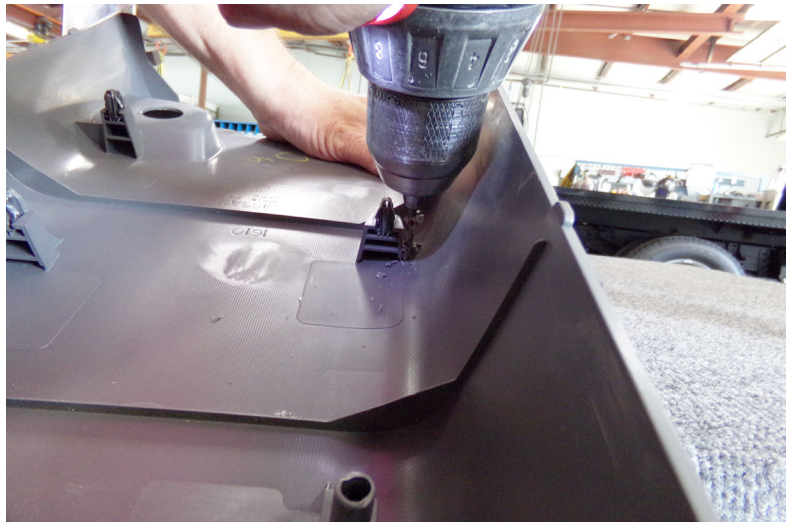
* Use a rotary saw blade to evenly trim away the edge. Remove the masking tape after the cut has been made.



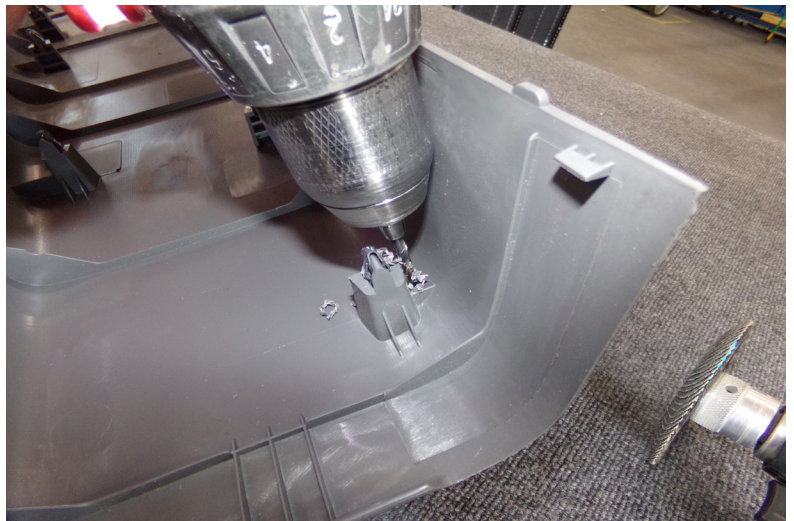
**Reference: Lower B-Pillar Cover
(Passenger Side)**

// PARTITION INSTALLATION

* On the backside of the lower B-Pillar cover, right next to the bottom mounting fastener, drill a small locating hole through the cover.



* Drill another locating hole through the backside of the lower B-Pillar cover right next to the top mounting fastener.



* Turn the cover over and use the locating holes to apply masking tape in a straight line along the back edge of the lower B-Pillar cover.



// PARTITION INSTALLATION

* Use the masking tape as a guide and trim the back edge of the cover with a rotary saw.



* Reinstall the covers and seat belts.



Remove foam block and retain for re-installation later.



// PARTITION INSTALLATION

Temporarily insert the partition assembly in the van. Make sure it fits snugly against the B-Pillars, floor and ceiling.



Use the partition assembly as a template to mark mounting hole locations. Mark all holes around the perimeter of the partition where previously drilled.



Mark mounting hole locations on the cab floor. Proper floor mounting hole locations are indicated by molded scribe lines on the partition.



WARNING!



Prior to drilling into any part of a vehicle, check behind and underneath drilling and mounting locations for electrical wire, fuel lines, brake lines, and other critical vehicle components. Adjust the drilling location as required to avoid these components. Failure to do so can result in death or serious injury in addition to impairing critical vehicle functions.

Remove the partition assembly from the van. Use a 1" hole saw to cut through the floor mat in marked locations.



WARNING!



Prior to drilling into any part of a vehicle, install a drill bit collar on the drill bit at the minimal required cutting depth.



// PARTITION INSTALLATION

Use a 25/64" drill bit with collar installed to drill mounting holes through the floor of the van in the marked locations.



Install 1/4-20 Riv-nuts (57904110) in each floor hole.



Use a 25/64" drill bit with collar installed to drill mounting holes through the B-Pillars in marked locations.



// PARTITION INSTALLATION

Install 1/4-20 Ribbed Riv-nuts (P/N 57904110) in the mounting hole locations in the B-Pillars and the floor.



Vacuum all debris from the cab and cargo area.



Re-install the partition assembly in the cargo area. Make sure the partition fits snugly against the B-Pillars, ceiling crossmember and floor.



// PARTITION INSTALLATION

Secure the partition assembly to the B-Pillars with (6) 1/4-20 x 1.0 Whiz Bolts (P/N 12065082) and (6) Sealing Washers (P/N 12051207).

Torque to 6 ft.-lbs. (+/-1 ft.-lb.).



Install (3) 1/4-20 x 1.0 Whiz Bolts and (3) Sealing Washers across the top of the partition assembly.

Torque to 6 ft.-lbs. (+/-1 ft.-lb.).



Install (4) 1/4-20 x 1.25 (12065074) Flange Bolts with Sealing Washers (12051132) through the L-Bracket and into the cab side floor.

Torque to 6 ft.-lbs. (+/-1 ft.-lb.).



// PARTITION INSTALLATION

Tighten the (4) 1/4-20 Whiz Nuts that secure the L-Bracket to the partition assembly.

Torque to 6 ft.-lbs. (+/-1 ft.-lb.).



Re-install the foam block that was previously removed.



The partition assembly is now completely installed.





The Knapheide Product Support Center
1848 Westphalia Strasse | P.O. Box 7140 | Quincy, IL 62305

P: 217-592-5233 | productsupport@knapheide.com