

// KNAPHEIDE VAN EQUIPMENT

# NISSAN NV200/CHEVY CITY EXPRESS PARTITION INSTALLATION INSTRUCTIONS



# **INTRODUCTION**

The following instructions detail the procedure for installing a Knapheide ABS Partition in a Nissan NV 200 or Chevy City Express Van.

## **TABLE OF CONTENTS**

Hardware.....	3
Partition Preparation .....	4-6
Partition Installation.....	7-14



The Knapheide Product Support Center  
1848 Westphalia Strasse | P.O. Box 7140 | Quincy, IL 62305

**P: 217-592-5233 | [productsupport@knapheide.com](mailto:productsupport@knapheide.com)**

**Knapheide product warranty information can be found at**

**<https://www.knapheide.com/files/source/knapheide/Service/Knapheide-Warranty.pdf>**

This document must not be copied or communicated to a third party without the expressed authorization of The Knapheide Manufacturing Company.

**FOR REF ONLY**

Printed copies are uncontrolled.

## // HARDWARE



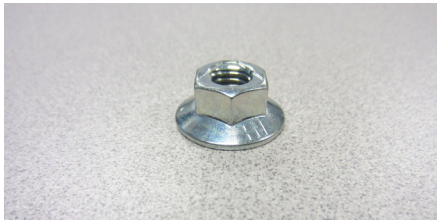
(8) Whiz Bolt  
1/4-20 x 1  
Part# 12065082



(6) Sealing Washer  
.43 x 1.00  
Part# 12051132



(13) Whiz Nut  
1/4-20  
Part# 12030144



(2) Flanged Locknut  
5/16-18  
Part# 30708270



(2) Set Screw  
5/16-18 x 2-1/2  
Part# 30708230



(13) Carriage Bolt  
1/4-20 x 3/4  
Part# 30900780



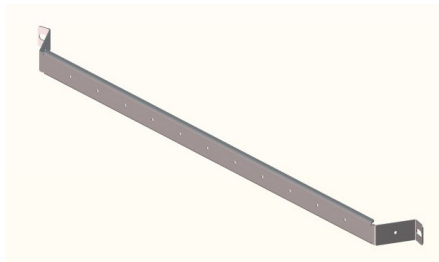
(2) Spacer  
3/4 O.D. x 3/8 I.D. x 1/2  
Part# 31836140



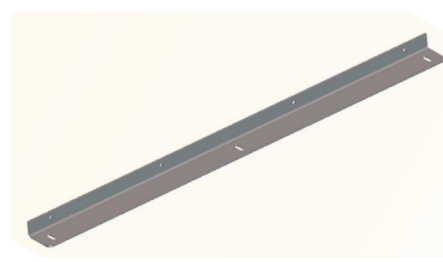
(2) Rivnut Plus  
5/16-18  
Part# 50903910



(8) Ribbed Riv-nut  
1/4-20  
Part# 57904110



(1) B-Pillar Brace  
Part# 26256628



(1) Floor Brace  
Part# 26256636

**CAUTION: Use of hardware other than provided, or alternative installation methods other than outlined herein, may void the product warranty. Fasteners should be tightened to called out specification or use Fastenal website torque calculator for any hardware not called out. Use caution when using air or battery operated tools.**

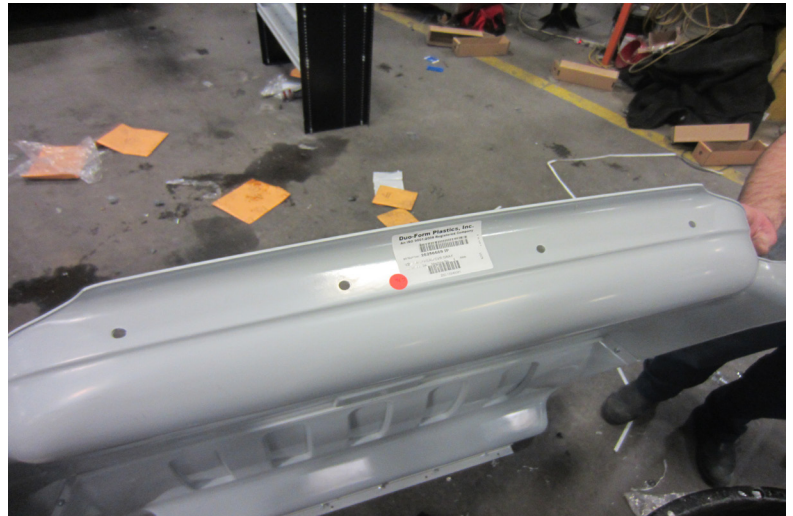
## // PARTITION PREPARATION

### WARNING!

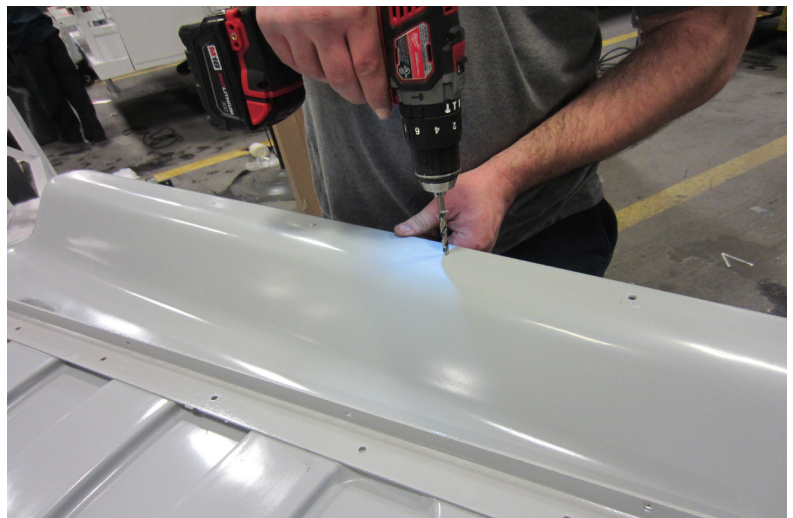


*Prior to drilling into any part of a vehicle, check behind and underneath drilling and mounting locations for electrical wire, fuel lines, brake lines, and other critical vehicle components. Adjust the drilling location as required to avoid these components. Failure to do so can result in death or serious injury in addition to impairing critical vehicle functions.*

Use a 1/4" drill bit to drill through the four dimples in the top of the partition.

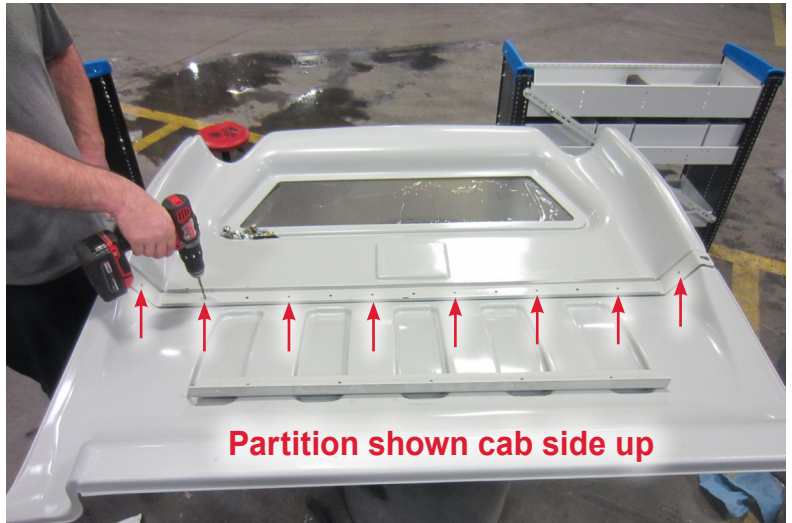


Drill 1/4" holes through each dimple along the bottom edge of the partition.



## // PARTITION PREPARATION

Lay the partition cab side up and place the middle brace (26256628) in position as shown. Use the brace as a template to drill 1/4" holes in locations indicated here.



Install 1/4" carriage bolts from the cargo side and secure with whiz nuts from the cab side. Keep hand tight until final installation in the van.



Position the floor brace (26256636) as shown at the bottom of the partition.

Install 1/4" carriage bolts from the cargo side and secure with whiz nuts from the cab side. Keep hand tight until final installation in the van.



## // PARTITION PREPARATION

Drill 3/8" clearance holes at slots at each end of the brace.



The partition is now ready to install in the van.



## // PARTITION INSTALLATION

### **WARNING!**



*Prior to drilling into any part of a vehicle, check behind and underneath drilling and mounting locations for electrical wire, fuel lines, brake lines, and other critical vehicle components. Adjust the drilling location as required to avoid these components. Failure to do so can result in death or serious injury in addition to impairing critical vehicle functions.*

Remove the front half of the rubber door seal on the left and right cargo door openings.



Open the back doors on the van and insert the partition into the van from the rear.



## // PARTITION INSTALLATION

Slide the partition forward to the front of the cargo area just behind the cab seats.



Push both sides forward to fit snugly against the right and left B pillars of the van.



Use the partition and brace as a template to drill a 1/4" hole through the B pillar trim on the right and left sides of the partition. Refer to the photo inset for hole locations.





## // PARTITION INSTALLATION

Make sure the partition is positioned against the B pillars. Mark hole locations behind the cabin seats for the floor bracket.



Slide the partition back out of the way.



Use a stop collar when drilling into the van floor or ceiling.



## // PARTITION INSTALLATION

Drill three 1/4" pilot holes in the floor at the locations previously marked. Increase the hole size of each hole to 25/64" for installation of Rivnuts.



Remove the four rear plastic fasteners in the ceiling headliner.

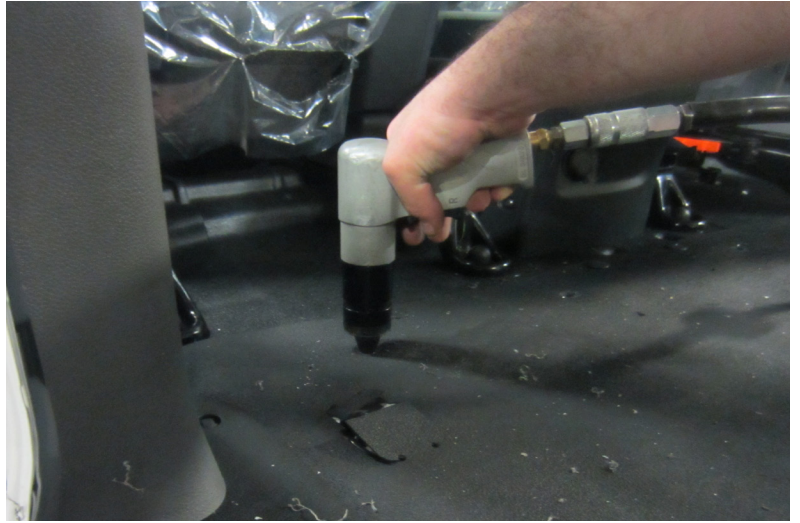


Drill four 25/64" holes through the holes in the headliner into the van ceiling (use a drill stop).



## // PARTITION INSTALLATION

Install 1/4-20 ribbed riv-nuts in the previously drilled holes in the floor.



Install 1/4-20 ribbed riv-nuts in the holes previously drilled in the ceiling.



Use a 1" hole saw to drill through the plastic trim on the left and right B pillars.



## // PARTITION INSTALLATION

Drill a 17/32" hole through the pilot holes previously drilled into the metal of the left and right B pillars.



Install 5/16-18 Plus Nuts in the two holes in the B pillars.



Install the setscrews into the Plus Nuts and slip spacers over the setscrews.

***NOTE: The setscrews must be installed with the allen head end exposed!***



## // PARTITION INSTALLATION

Re-install the rubber weatherstripping around each cargo door opening.



Re-install the partition. Place a sealing washer over each of the setscrews.



Install a flanged locknut on each setscrew.



## // PARTITION INSTALLATION

Use a backup wrench (box wrench) and allen wrench to tighten the flanged locknut. The setscrew should not protrude past the outer surface of the flanged nut.



Secure the bottom of the partition to the van floor with 1/4-20 whiz bolts.

Torque to 6 ft.-lbs. (+/-1 ft.-lb.).



Secure the top of the partition to the van ceiling with 1/4-20 whiz bolts.

Torque to 6 ft.-lbs. (+/-1 ft.-lb.).





The Knapheide Product Support Center  
1848 Westphalia Strasse | P.O. Box 7140 | Quincy, IL 62305

**P: 217-592-5233 | [productsupport@knapheide.com](mailto:productsupport@knapheide.com)**