

// KNAPHEIDE VAN EQUIPMENT

RAM PROMASTER CITY PARTITION INSTALLATION INSTRUCTIONS



INTRODUCTION

The following instructions detail the procedure for installing a Knapheide ABS Partition in a Ram Pro-master City Van.

TABLE OF CONTENTS

Hardware.....	3
Partition Preparation	4
Partition Installation.....	5-11



The Knapheide Product Support Center
1848 Westphalia Strasse | P.O. Box 7140 | Quincy, IL 62305

P: 217-592-5233 | productsupport@knapheide.com

Knapheide product warranty information can be found at

<https://www.knapheide.com/files/source/knapheide/Service/Knapheide-Warranty.pdf>

This document must not be copied or communicated to a third party without the expressed authorization of The Knapheide Manufacturing Company.

FOR REF ONLY

Printed copies are uncontrolled.

// HARDWARE



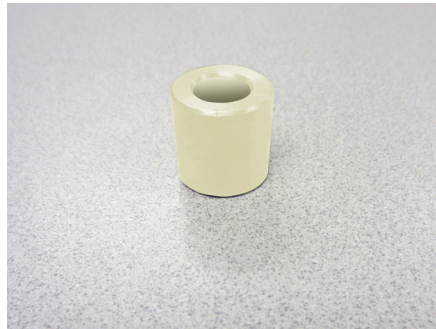
(4) Hex Flange Screw
M8-1.25 x 25
Part# 31043320



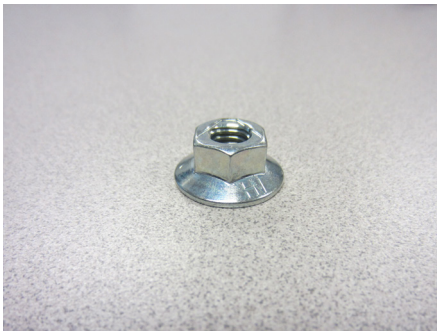
(12) Sealing Washer
.43 x 1.00
Part# 12051132



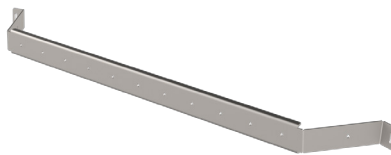
(8) Set Screw (Hex)
M6-1.00 x 60
Part# 32254280



(8) Spacer
3/4 O.D. x 5/16 I.D. x 3/4
Part# 31836150



(15) Flanged Whiz Nut
M6-1.0
Part# 31568940



(1) B-Pillar Brace
Part# 26265538



(7) Carriage Bolt
M6-1.00 x 20
Part# 31568930

CAUTION: Use of hardware other than provided, or alternative installation methods other than outlined herein, may void the product warranty. Fasteners should be tightened to called out specification or use Fastenal website torque calculator for any hardware not called out. Use caution when using air or battery operated tools.

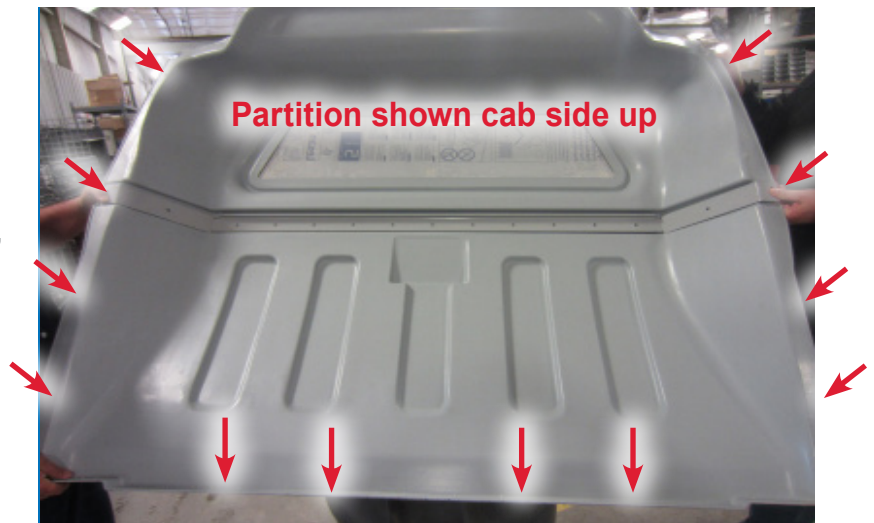
// PARTITION PREPARATION

WARNING!

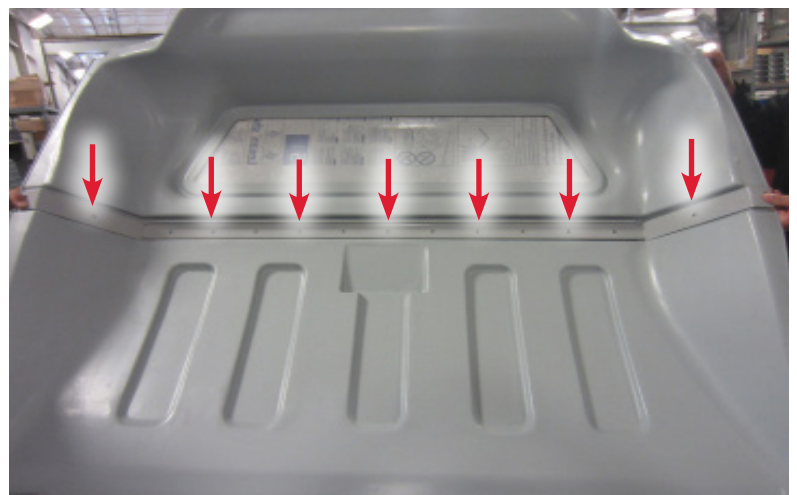


Prior to drilling into any part of a vehicle, check behind and underneath drilling and mounting locations for electrical wire, fuel lines, brake lines, and other critical vehicle components. Adjust the drilling location as required to avoid these components. Failure to do so can result in death or serious injury in addition to impairing critical vehicle functions.

Lay the partition cab side up and drill 1/4" pilot holes at all dimple locations.



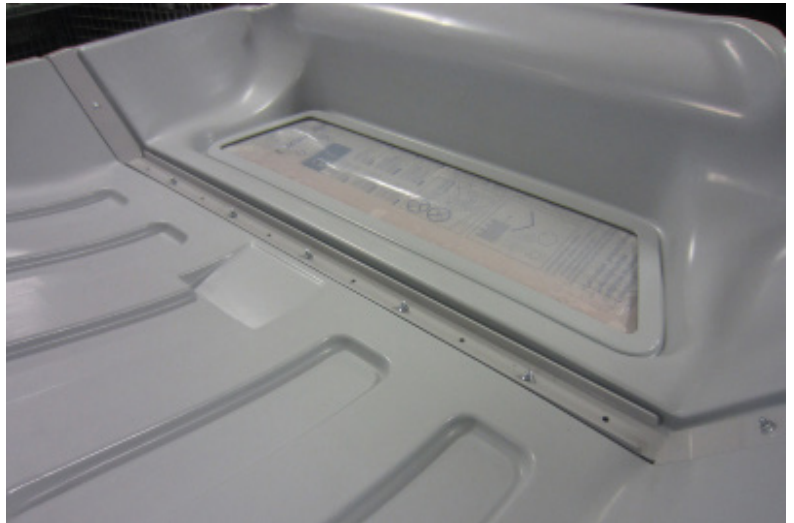
Position the B-pillar brace (26265538) into the molded belt line of the partition. Use the brace as a template to drill 1/4" pilot holes where indicated.



// PARTITION PREPARATION

Secure the brace to the partition with seven M6-1.00 x 20 carriage bolts (cargo side) and nuts (cab side).

Torque to 6 ft.-lbs. (+/-1 ft.-lb.).



Re-drill each hole around the perimeter of the partition to 3/8".



The partition is now ready to install in the van.



// PARTITION INSTALLATION

WARNING!



Prior to drilling into any part of a vehicle, check behind and underneath drilling and mounting locations for electrical wire, fuel lines, brake lines, and other critical vehicle components. Adjust the drilling location as required to avoid these components. Failure to do so can result in death or serious injury in addition to impairing critical vehicle functions.

Remove both overhead trim pieces.



Remove the front half of the door seal on the left and right cargo door openings.



// PARTITION INSTALLATION

Position the partition in the van firmly against the floor and B-pillars.

CAUTION!

The partition must sit firmly on the steel floor. If a floor mat or subfloor is installed, cut and remove a portion of the floor mat or subfloor to allow the drilled partition holes to align with the factory threaded inserts on the B-pillars. Excessive subfloor thickness will result in misalignment of B-pillar holes and distortion at the headliner.



Use the partition as a template to mark holes 1 thru 8 to be drilled into the van's interior.

* Make sure holes 9-12 align with the factory threaded inserts on the cab side.



Remove the partition from the van and prepare to drill the marked holes.



// PARTITION INSTALLATION

Use a 1-1/8" hole saw to drill the 8 holes in the marked locations on the B-pillars.



Deburr all the holes.



Install M6 set screws and 3/4" spacers in the 8 holes. The hex end of the set screw must face outward.



// PARTITION INSTALLATION

Re-insert the partition into the van firmly against the B-pillars.



Make sure all 8 set screws protrude through the perimeter holes.



Install M6 flange nuts and washers on each set screw to secure the partition to the B-pillars. Use an allen wrench and back-up wrench to tighten the flange nuts and set the depth of the setscrew.



// PARTITION INSTALLATION

The outer ends of the set screws should only protrude slightly from the flange nuts.



Secure the bottom of the partition to the van floor (in cab area) with four M8 hex flange screws and washers.

Torque to 12 ft.-lbs. (+/-1 ft.-lb.).



Re-install the two overhead trim pieces.



// PARTITION INSTALLATION

Re-install the cargo door seals.



Installation is complete.





The Knapheide Product Support Center
1848 Westphalia Strasse | P.O. Box 7140 | Quincy, IL 62305

P: 217-592-5233 | productsupport@knapheide.com