

// KNAPHEIDE VAN EQUIPMENT

RAM PROMASTER PARTITION INSTALLATION INSTRUCTIONS



INTRODUCTION

The following instructions detail the procedure for installing a Knapheide ABS Partition in a Ram Pro-master Van.

TABLE OF CONTENTS

Hardware.....3-4

Partition Preparation5-9

Partition Installation 10-18



The Knapheide Product Support Center
1848 Westphalia Strasse | P.O. Box 7140 | Quincy, IL 62305

P: 217-592-5233 | productsupport@knapheide.com

Knapheide product warranty information can be found at

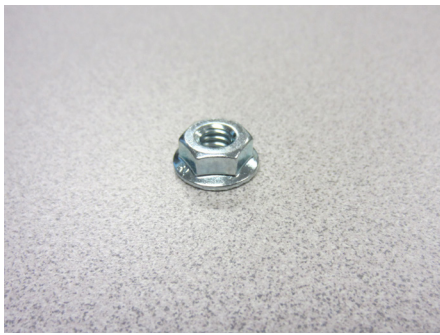
<https://www.knapheide.com/files/source/knapheide/Service/Knapheide-Warranty.pdf>

This document must not be copied or communicated to a third party without the expressed authorization of The Knapheide Manufacturing Company.

FOR REF ONLY

Printed copies are uncontrolled.

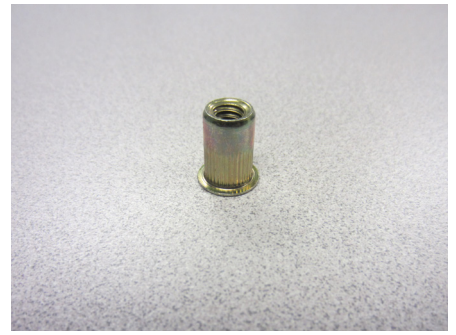
// HARDWARE



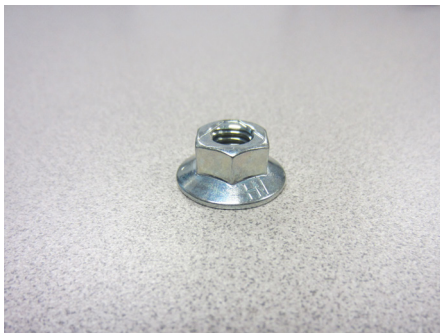
(29) Whiz Nut
1/4-20
Part# 12030144



(6) Set Screw
5/16-18 x 2-1/2
Part# 30708230



(9) Ribbed Riv-nut
1/4-20
Part# 57904110



(6) Flanged Locknut
5/16-18
Part# 30708270



(27) Carriage Bolt
1/4-20 x 3/4
Part# 30900780



(6) Spacer
3/4 O.D. x 5/16 I.D. x 3/4
Part# 31836150



(6) Rivnut Plus
5/16-18
Part# 50903910



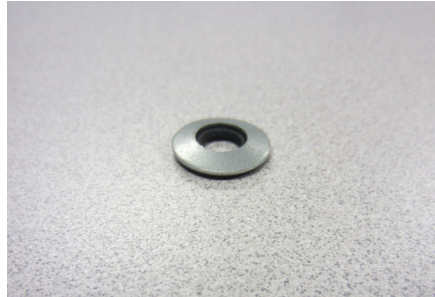
(9) Whiz Bolt
1/4-20 x 1
Part# 12065082

CAUTION: Use of hardware other than provided, or alternative installation methods other than outlined herein, may void the product warranty. Fasteners should be tightened to called out specification or use Fastenal website torque calculator for any hardware not called out. Use caution when using air or battery operated tools.

// HARDWARE



(6) Sealing Washer
.43 x 1.00
Part# 12051132



(5) Sealing Washer
.27 x .562
Part# 12051207



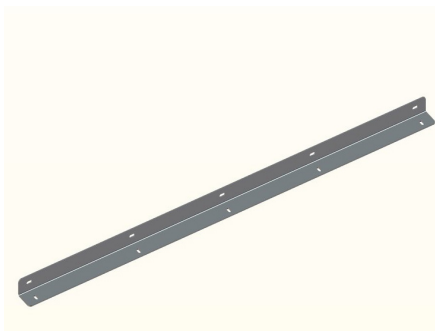
(2) Button Head Screw
1/4-20 x 1
Part# 31451250



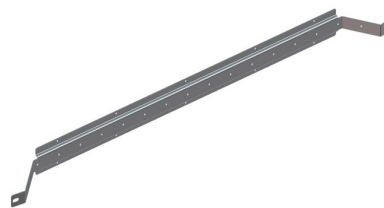
(1) Grab Handle Bracket
Part# 26256958



(1) Grab Handle
Part# 26268821



(1) Floor Brace
Part# 26256933



(1) B-Pillar Brace
Part# 26256941

CAUTION: Use of hardware other than provided, or alternative installation methods other than outlined herein, may void the product warranty. Fasteners should be tightened to called out specification or use Fastenal website torque calculator for any hardware not called out. Use caution when using air or battery operated tools.

// PARTITION PREPARATION



WARNING!

Prior to drilling into any part of a vehicle, check behind and underneath drilling and mounting locations for electrical wire, fuel lines, brake lines, and other critical vehicle components. Adjust the drilling location as required to avoid these components. Failure to do so can result in death or serious injury in addition to impairing critical vehicle functions.

Use a 1/4" drill bit to drill through the four dimples in the top of the partition.



Drill 1/4" holes through the dimples on the left and right side partition flanges.



// PARTITION PREPARATION

Stand the partition up and place the floor brace against the cab side bottom of the partition. Center the floor brace against the partition.

NOTE: If a subfloor is installed in the van, the top of the partition must be trimmed to accommodate the floor thickness.



Align the floor brace with the dimples molded into the partition. Use the floor brace as a template to drill 1/4" holes at each position.



Attach the floor brace to the partition by inserting 1/4-20 x 3/4" carriage bolts from the cargo side and securing with 1/4-20 nuts on the cab side.



// PARTITION PREPARATION

Position and clamp the B-pillar brace to the partition as shown (both sides).



Use the brace as a template to drill 1/4" holes through the partition at the location shown (right and left sides of partition).



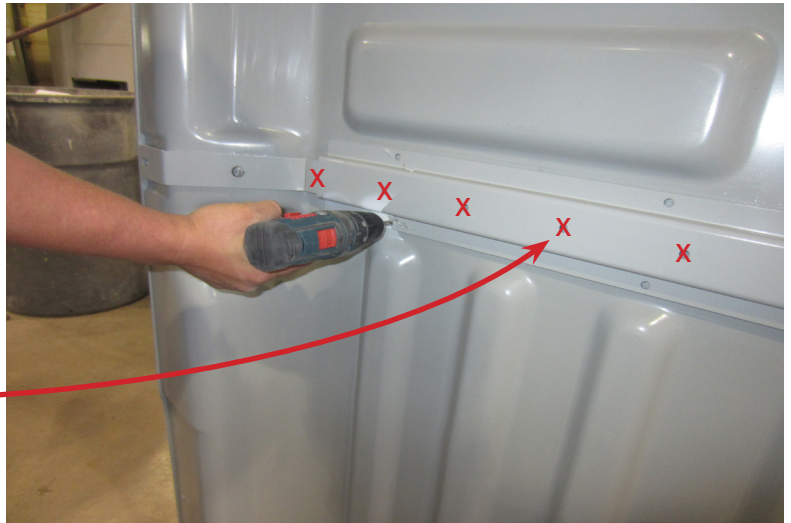
Attach the brace to the partition by installing 1/4-20 carriage bolts from the cargo side and securing with 1/4" nuts on the cab side.

Torque to 6 ft.-lbs. (+/-1 ft.-lb.).



// PARTITION PREPARATION

Remove the c-clamps and drill 1/4" holes in the partition through the upper and lower holes of the B-pillar brace flanges. *DO NOT drill through the middle row of holes in the brace.*



Install carriage bolts and nuts in the remaining holes and secure the brace to the partition as shown.



Self-locate the grab handle bracket on the passenger cab side of the partition (narrower end of bracket to the top). Using the bracket as a template, drill six 1/4" holes through the partition.



// PARTITION PREPARATION

Attach the bracket to the partition by installing carriage bolts from the cargo side and securing with nuts on the cab side.



Locate the two interior holes on the grab handle bracket and drill $\frac{1}{4}$ " holes.



Install the grab handle on the cargo side of the partition and secure it with $\frac{1}{4}$ " nuts on the cab side.

Install the caps on the grab handle.



// PARTITION INSTALLATION



WARNING!

Prior to drilling into any part of a vehicle, check behind and underneath drilling and mounting locations for electrical wire, fuel lines, brake lines, and other critical vehicle components. Adjust the drilling location as required to avoid these components. Failure to do so can result in death or serious injury in addition to impairing critical vehicle functions.

Remove the front half of the cargo door seals on the left and right cargo door openings.



Lift the partition into the van.

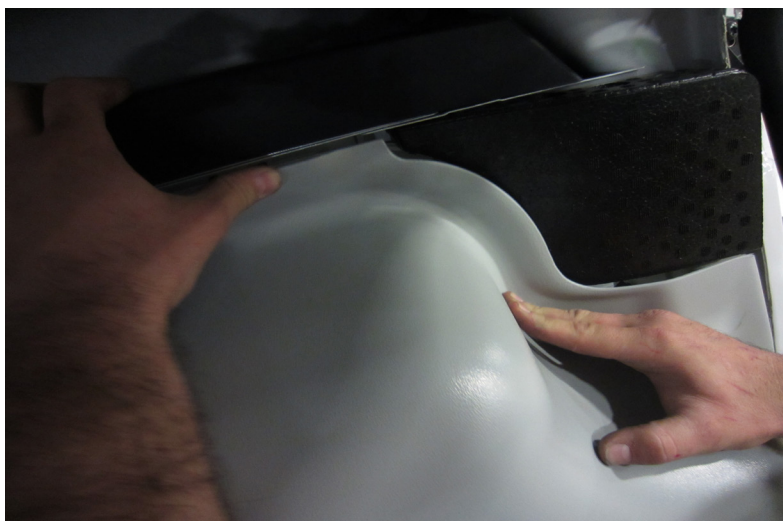


// PARTITION INSTALLATION

Slide the partition forward to the front of the cargo area just behind the cab seats. Tilt the top of the partition forward and push the bottom in place. Push both sides forward to fit snugly against the right and left B-pillars of the van.



The corner edge of the partition must fit around the two factory installed foam pads.



Use the partition and brace as a template to mark the hole locations along the right and left B-pillars.



// PARTITION INSTALLATION

Use the partition as a template to drill four 25/64" holes into the cab upper crossmember.



Make sure the partition is secure against the B-pillars. Use the floor brace as a template to mark hole locations to be drilled.



Slide the partition back out of the way, or remove it from the van so that holes can be drilled in the floor.



// PARTITION INSTALLATION

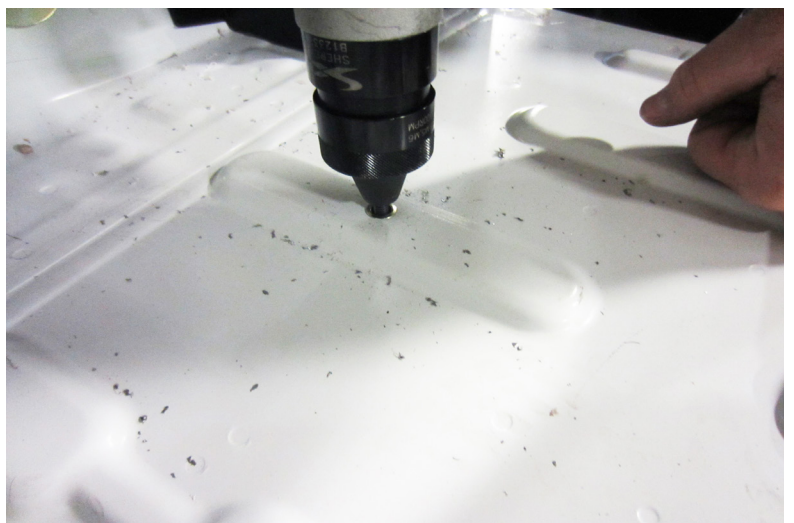
Use a stop collar when drilling into the van floor to eliminate risk of damage to fuel tank or lines underneath the floor.



Drill 25/64" holes in the van floor at marked locations.



Install five 1/4-20 ribbed Riv-nuts in each hole.



// PARTITION INSTALLATION

Use a 1-1/8" hole saw to drill through the plastic trim in the doorways in locations previously marked.



Drill 1/2" holes in the B-pillars in previously marked locations (three on left side and three on right side). ***DO NOT damage seat belt mechanisms or other components located in the B-pillars.***



Install 5/16-18 Riv-nuts in the six holes.



// PARTITION INSTALLATION

Carefully trim the cab headliner where Riv-nuts will be installed in the cab upper cross-member.



Install 1/4-20 Riv-nuts in the previously drilled hole locations.



This photo shows the four Riv-nuts properly installed and the headliner neatly trimmed.



// PARTITION INSTALLATION

Install setscrews and bushings into the B-pillars (six locations).



Re-install the partition in the van. Tilt the top of the partition forward and push the bottom in place.



Make sure the partition fits over the setscrews and snugly against the B-pillars.



// PARTITION INSTALLATION

Install a sealing washer and hand tighten a flange nut on each setscrew.



Re-install the cargo door seals.

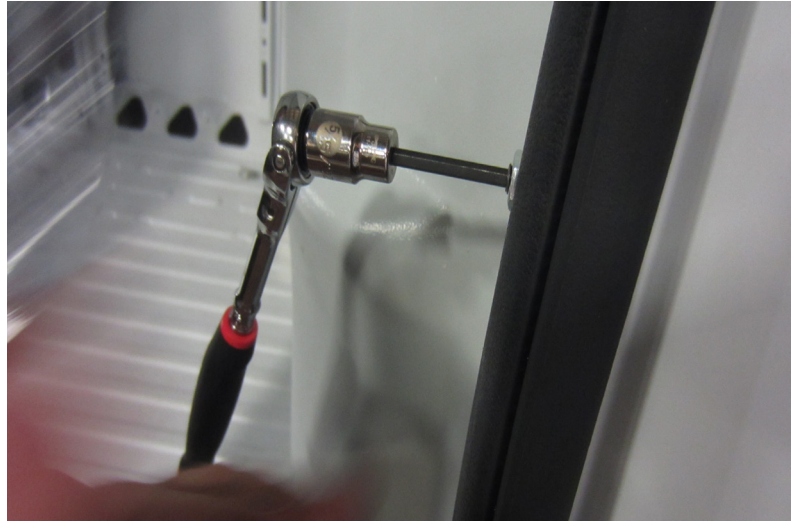


Make sure the door seals fit snugly, partially covering the flange nuts.



// PARTITION INSTALLATION

Use an allen wrench to tighten the flange nut (a backup wrench may be required). The partition should fit snugly against the B-pillar and the tip of the setscrew should be flush with the outer surface of the flange nut.



Secure the top of the partition with four 1/4-20 x 1" bolts.

Torque to 6 ft.-lbs. (+/-1 ft.-lb.).



Secure the bottom of the partition to the floor on the inside of the cab with five 1/4-20 x 1" whiz bolts.

Torque to 6 ft.-lbs. (+/-1 ft.-lb.).





The Knapheide Product Support Center
1848 Westphalia Strasse | P.O. Box 7140 | Quincy, IL 62305

P: 217-592-5233 | productsupport@knapheide.com