

// KNAPHEIDE VAN EQUIPMENT

RAM PROMASTER PARTITION WITH DOOR INSTALLATION INSTRUCTIONS



INTRODUCTION

The following instructions detail the procedure for installing a Knapheide ABS Partition with a door in a Ram Promaster Van.

TABLE OF CONTENTS

Hardware.....	3
Partition Preparation	4-13



The Knapheide Product Support Center
1848 Westphalia Strasse | P.O. Box 7140 | Quincy, IL 62305

P: 217-592-5233 | productsupport@knapheide.com

Knapheide product warranty information can be found at

<https://www.knapheide.com/files/source/knapheide/Service/Knapheide-Warranty.pdf>

This document must not be copied or communicated to a third party without the expressed authorization of The Knapheide Manufacturing Company.

FOR REF ONLY

Printed copies are uncontrolled.

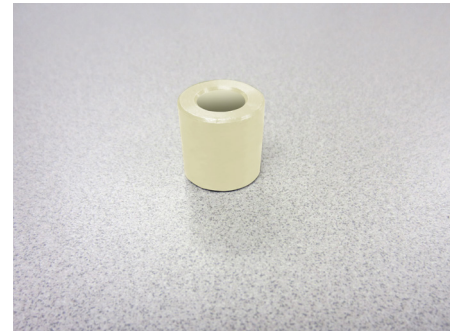
// HARDWARE



(6) Rivnut Plus
5/16-18
Part# 50903910



(6) Set Screw
5/16-18 x 2-1/2
Part# 30708230



(6) Spacer
3/4 O.D. x 5/16 I.D. x 3/4
Part# 31836150



(6) Sealing Washer
.43 x 1.00
Part# 12051132



(6) Flanged Locknut
5/16-18
Part# 30708270



(9) Ribbed Riv-nut
1/4-20
Part# 57904110



(9) Whiz Bolt
1/4-20 x 1
Part# 12065082

CAUTION: Use of hardware other than provided, or alternative installation methods other than outlined herein, may void the product warranty. Fasteners should be tightened to called out specification or use Fastenal website torque calculator for any hardware not called out. Use caution when using air or battery operated tools.

// PARTITION INSTALLATION

WARNING!



Prior to drilling into any part of a vehicle, check behind and underneath drilling and mounting locations for electrical wire, fuel lines, brake lines, and other critical vehicle components. Adjust the drilling location as required to avoid these components. Failure to do so can result in death or serious injury in addition to impairing critical vehicle functions.

Remove the front half of the cargo door seal.



After unpacking, position the partition in the vehicle as shown.



// PARTITION INSTALLATION

Slide the partition forward to the front of the cargo area just behind the cab seats. Tilt the top of the partition forward and push the bottom in place. Push both sides forward to fit snugly against the right and left B-pillars of the van.



The corner edge of the partition must fit around the two factory installed foam pads.



Use the partition and brace as a template to mark the hole locations (3 per side) along the right and left B-pillars.



// PARTITION INSTALLATION

Use the partition as a template to mark four hole locations on the cab upper crossmember.



Make sure the partition is secure against the B-pillars. Use the floor brace as a template to mark hole locations to be drilled.

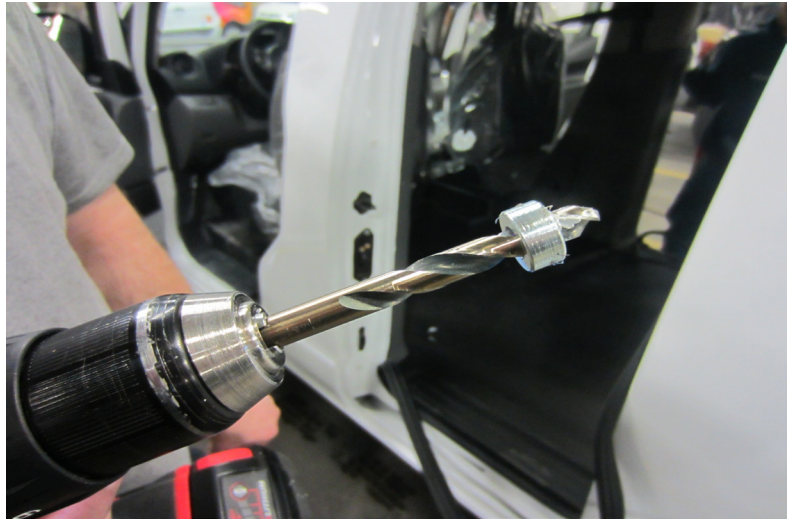


Slide the partition back out of the way, or remove it from the van so that holes can be drilled in the floor.



// PARTITION INSTALLATION

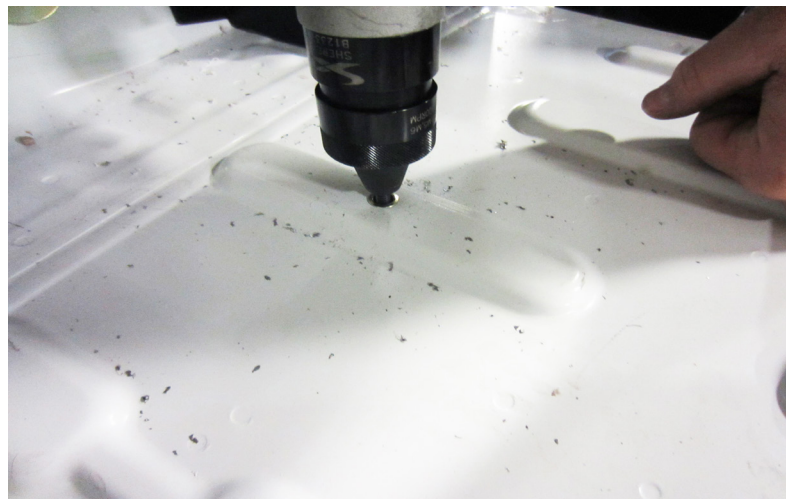
CAUTION! Use a stop collar when drilling into the van sheet metal to eliminate risk of damage to hidden components.



Drill 25/64" holes in the van floor at marked locations.



Install 1/4-20 ribbed Riv-nuts in each hole.



// PARTITION INSTALLATION

Use a 1-1/8" hole saw to drill through the plastic trim only in the doorways in locations previously marked. **DO NOT drill into the B-pillar!**



Drill 1/2" holes in the B-pillars in previously marked locations (three on left side and three on right side). **DO NOT damage seat belt mechanisms or other components located in the B-pillars!**



Install 5/16-18 Riv-nuts in the six holes.



// PARTITION INSTALLATION

Carefully trim the cab headliner where Riv-nuts will be installed in the cab upper cross-member.



CAUTION! Use a stop collar when drilling into the van sheet metal to eliminate risk of damage to hidden components.



Use a 25/64" drill bit equipped with a bit collar to drill through the van crossmember in marked locations.



// PARTITION INSTALLATION

Install 1/4-20 Riv-nuts in the previously drilled hole locations.



This photo shows the four Riv-nuts properly installed and the headliner neatly trimmed.



Install setscrews and nylon spacers into the B-pillars (six locations). *Make sure the hex end of the setscrew is facing outward!*



// PARTITION INSTALLATION

The hex end of the screw must be facing out.



Re-install the partition in the van. Tilt the top of the partition forward and push the bottom in place.



Make sure the partition fits over the set-screws and snugly against the B-pillars.



// PARTITION INSTALLATION

Install a sealing washer and hand tighten a flange nut on each setscrew.



Re-install the cargo door seal. Make sure the door seal fits snugly, partially covering the flange nuts.



Use an allen wrench to tighten the flange nut (a backup wrench may be required). The partition should fit snugly against the B-pillar and the tip of the setscrew should be flush with the outer surface of the flange nut.



// PARTITION INSTALLATION

Secure the top of the partition with four 1/4-20 x 1" bolts.

Torque to 6 ft.-lbs. (+/-1 ft.-lb.).



Secure the bottom of the partition to the floor on the inside of the cab with five 1/4-20 x 1" whiz bolts.

Torque to 6 ft.-lbs. (+/-1 ft.-lb.).





The Knapheide Product Support Center
1848 Westphalia Strasse | P.O. Box 7140 | Quincy, IL 62305

P: 217-592-5233 | productsupport@knapheide.com