

KNAPHEIDE VAN EQUIPMENT INSTALLATION INSTRUCTIONS

DIVIDER FOR UPGRADABLE SHELF 33897889

DOCUMENT # 68300-01

KNAPHEIDE
SINCE 1848



33897896 Upgradable Shelf Divider Hardware		
QTY	PART #	DESCRIPTION
2	33897093	Hex Nut M6 Self Locking
2	33897089	M6 x 12 Raised Flange Screw

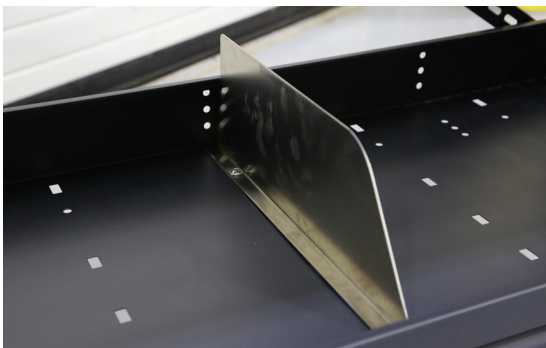
The Upgradable Shelf Divider 401010283 - Kit can be installed on Wide-4 & Wide-6 upgradable shelves.

Each kit includes mounting screws and nuts.



Determine the desired location for the upgradable shelf divider.

Line up the holes of the divider with the holes in the shelf.



Install the divider with provided hardware.

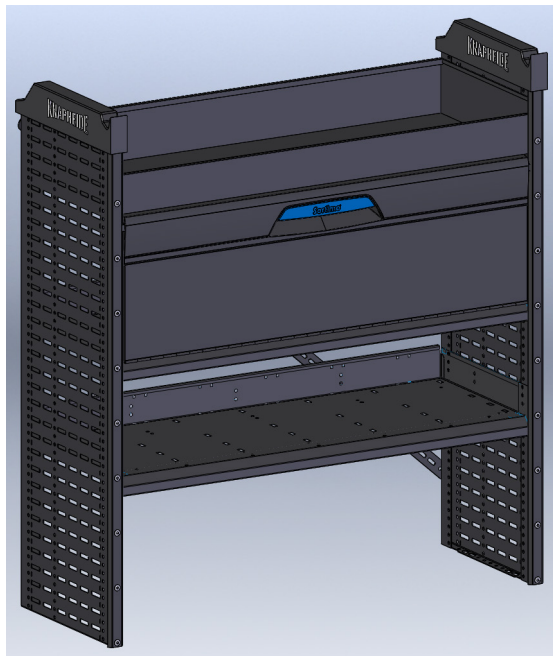
NOTE: Installation of the upgradable shelf divider with a shelf lip is possible using the provided hardware or by using the shelf lip hardware (front hole only).

The divider is installed over the shelf lip in this situation.

This document must not be copied or communicated to a third party without the expressed authorization of The Knapheide Manufacturing Company.

FOR REF ONLY

Printed copies are uncontrolled.



NOTE: The upgradable shelf divider is also compatible with the drop down door kit DR40-18.

