

KNAPHEIDE

SINCE 1848

ISUZU
TRUCK



ISUZU
**KNAPHEIDE
BODIES**

ISUZU KNAPHEIDE BODIES

Knapheide offers the widest range of vocational truck bodies for the Isuzu N-Series. From part/supply organizational unto bulk hauling, get more out of your N-Series with a Knapheide body.

Knapheide is a proud partner in the Isuzu Road Ready Body Program, which allows you to order some of the most popular bodies and options directly from Isuzu. Check with your local Isuzu dealer for bodies and program offers.



KUVcc BODIES*



DUMP BODIES*



LANDSCAPER BODIES*



STEEL SERVICE BODIES



STEEL PLATFORM BODIES



ALUMINUM PLATFORM BODIES

** Available through Isuzu Road Ready Program*



KUVcc BODIES

- A. DOUBLE paneled doors**
made of galvaneal steel (20-gauge outer panel, 20-gauge inner panel) are reinforced with internal braces for durability
- B. TWO CONDUIT CHUTES**
to transport copper pipes, PVC, and conduit
- C. AUTOMOTIVE-QUALITY, ROTARY-STYLE LATCHES**
make opening and closing easy
- D. ELECTRODEPOSITION PRIME-PAINT SYSTEM**
provides superior corrosion resistance
- E. FLAT PANEL SPACE**
provides rolling billboard to promote business
- F. INTEGRATED LED S/T/T AND B/U, LED STROBE OPTION***
with (8) selectable patterns and built-in reflectivity for additional safety**
- G. DOUBLE PANEL REAR CARGO DOORS**
lock and seal into the body frame. These 20-gauge galvaneal steel doors have nitrogen gas struts and slam latches.

*Additional wire harness required for strobe lights
**Covered under 3-year limited warranty



**Body may be shown with optional features*



CARGO AREA AND CONDUIT CHUTE LENGTH
10.5' in 127" bodies
12.5' in 151" bodies

FEATURES NOT SHOWN

- COMPARTMENTS CAN BE LOCKED INDEPENDENTLY**
for maximum security
- TWO INTERIOR LED DOME LIGHTS**
in cargo area with light switch inside the cargo doors
- GRAB HANDLE**
(rear right)

COMPARTMENT FEATURES



DOUBLE-SPRING OVER-CENTER RETAINER
on vertical compartment doors eliminate involuntary swing



NEOPRENE DOOR SEALS
protect compartments from the weather



MASTER LOCKING SYSTEM
for peace of mind — locks down all of the side compartments in one move



CONTINUOUS STAINLESS STEEL HINGES
are pry-proof and corrosion-resistant

STANDARD SHELVING



STREET AND CURB SIDE FRONT VERTICAL COMPARTMENTS
Two adjustable divider shelves and dividers, with a 250-lb. capacity



STREET AND CURB SIDE FULL HEIGHT REAR VERTICAL COMPARTMENTS
One adjustable divider shelf and dividers, with a 250-lb. capacity



CURB SIDE HORIZONTAL COMPARTMENT
One adjustable divider shelf and dividers, with a 250-lb. capacity



REQUEST A QUOTE

Visit knapheide.com/quote and fill out the form to receive a quote and additional product information.

POPULAR OPTIONS



POWER LOCKS



CODEABLE PADLOCK



UPPER SIDE GLASS



REAR VISION CAMERA



ALUMINUM DRAWERS



SIDE ACCESS DOOR



REAR DOOR WINDOWS



CLASS V RECEIVER HITCH



PULL OUT TRAY



POWER LIFTGATE

Not available on SRW models



LED COMPARTMENT LIGHTING

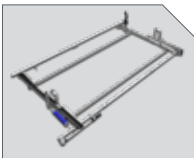


MECHANICS VISE BRACKET

Vise sold separately



SPITZLIFT



DROP-DOWN LADDER RACK

Prime Design



3 BOW LADDER RACK



SIDE MOUNT LADDER RACK

MODEL OPTIONS

86.5” - 88.5” CA DUAL REAR WHEEL

MODEL	BODY LENGTH	BODY HEIGHT	BODY WIDTH	COMPARTMENT DEPTH	CLEAR DOOR WIDTH	CLEAR DOOR HEIGHT	INTERIOR CLEAR HEIGHT	BODY WEIGHT
KC127H2089LCF	127.25”	90”	89”	20”	44.5”	64.8”	76.1”	2,392 lb.
KC127M2089LCF	127.25”	78”	89”	20”	44.5”	54.1”	64.1”	2,263 lb.

APPLICABLE CHASSIS	CAB	CA	WHEELBASE	ENGINE TYPE	GVWR
NPR	Regular	86.5”	109”	Gas	12,000 lb.
NPR	Crew	88.9”	150”	Gas	12,000 lb.
NPR HD	Regular	86.5”	109”	Gas	14,500 lb.
NPR HD	Crew	88.9”	150”	Gas	14,500 lb.

110” CA DUAL REAR WHEEL

MODEL	BODY LENGTH	BODY HEIGHT	BODY WIDTH	COMPARTMENT DEPTH	CLEAR DOOR WIDTH	CLEAR DOOR HEIGHT	INTERIOR CLEAR HEIGHT	BODY WEIGHT
KC151H2089LCF	151.25”	90”	89”	20”	44.5”	64.8”	76.1”	2,796 lb.
KC151M2089LCF	151.25”	78”	89”	20”	44.5”	54.1”	64.1”	2,643 lb.

APPLICABLE CHASSIS	CAB	CA	WHEELBASE	ENGINE TYPE	GVWR
NPR	Regular	110”	132.5”	Gas	12,000 lb.
NPR HD	Regular	110”	132.5”	Gas	14,500 lb.
NQR	Regular	110”	132.5”	Gas	17,950 lb.
NRR	Regular	110”	132.5”	Gas	19,500 lb.

DUMP BODIES

- A. SELF-CLEANING SLOPED TOP RAILS AND LOWER RAILS**
on sides and tailgate
- B. SIDES ARE CONSTRUCTED OF 12-GAUGE HIGH TENSILE STEEL**
- C. 2X6 SIDE BOARD POCKETS**
on the sides at the front and rear allow for increased load capacity
- D. VERSATILE, DOUBLE ACTING TAILGATE**
accommodates both drop-down, pick-up style and spreader applications

- E. QUICK RELEASE, ONE-HANDED LEVER**
for easy drop-down action on the tailgate
- F. TOE SAVER BRACKETS**
located on both sides of the end rail for operator safety
- G. REAR CORNER POSTS**
equipped with a hook on each side for an optional tarp
- H. QUARTER CAB PROTECTOR**
constructed of 10-gauge high tensile steel with a punched window for visibility



KDBDS1112
**Body may be shown with optional features*



CROSSMEMBERLESS UNDERSTRUCTURE

FEATURES NOT SHOWN

DOUBLE PANEL TAILGATE
construction with 12-gauge HY50 outer panel and 10-gauge HY50 inner panel

ELECTRODEPOSITION PRIME-PAINT SYSTEM
provides superior corrosion resistance

BODIES ARE CROSSMEMBERLESS AND FEATURE FULLY BOXED LONG SILLS
constructed of 7-gauge HRCQ steel and run the entire length of the floor

BODIES ARE FULLY PROTECTED WITH KNAPHEIDE'S WATER-BASED UNDERCOAT

REQUEST A QUOTE



Visit knapheide.com/quote and fill out the form to receive a quote and additional product information.



MODEL OPTIONS

MODEL	SIDES	UNDERSTRUCTURE STYLE	CAPACITY	LENGTH	SIDE HEIGHT	NET WEIGHT
KDBDS1112	Drop	Crossmemberless	3 yd.	11'5"	12"	1,577 lb.
KDBDS1116	Drop	Crossmemberless	4 yd.	11'5"	16"	1,667 lb.
KDBDS1112-B	Drop	Crossmemberless	3 yd.	11'5"	12"	1,577 lb.
KDBDS1116-B	Drop	Crossmemberless	4 yd.	11'5"	16"	1,667 lb.
KDBF1112	Fixed	Crossmemberless	3 yd.	11'5"	12"	1,621 lb.
KDBF1116	Fixed	Crossmemberless	4 yd.	11'5"	16"	1,726 lb.
KDBF1112-B	Fixed	Crossmemberless	3 yd.	11'5"	12"	1,621 lb.
KDBF1116-B	Fixed	Crossmemberless	4 yd.	11'5"	16"	1,726 lb.

APPLICABLE CHASSIS	CA		WHEELBASE		ENGINE TYPE	GVWR
	Standard	Crew	Standard	Crew		
NPR	86.5"	88.5"	109"	150"	Gas	12,000 lb.
NPR-HD	86.5"	88.5"	109"	150"	Gas	14,500 lb.
NPR	86.5"	-	109"	-	Diesel	13,000 lb.
NPR-HD	86.5"	88.5"	109"	150"	Diesel	14,500 lb.
NPR-XD	86.5"	88.5"	109"	150"	Diesel	16,000 lb.
NQR	86.5"	88.5"	109"	150"	Diesel	17,950 lb.
NRR	86.5"	-	109"	-	Diesel	19,500 lb.

POPULAR OPTIONS



LED LIGHTS



TARP*



BODY RAISE INDICATOR



UNDERBODY TOOLBOX



KNAPPAK



POLY BOARD EXTENSIONS*



ICC BUMPER



CLASS V RECEIVER HITCH



METERING CHUTE



PAINTED RED*



REQUEST A QUOTE



Visit knapheide.com/quote and fill out the form to receive a quote and additional product information.

CAB PROTECTORS

MODEL	STYLE	APPLICATION	HEIGHT	NET WEIGHT
KCP-025S33-P (B)	Straight Quarter Cab	2-3 Yard Dumps	36.8"	200 lb.
KCP-100S33-P (B)	Straight Full Cab	3-4 Yard Dumps	37.7"	282 lb.

*-P denotes prime paint; *-B denotes black finish paint.



STRAIGHT QUARTER CAB PROTECTOR



STRAIGHT FULL CAB PROTECTOR



KDBDS-1112
*Body may be shown with optional features



SUBFRAME HOIST

ED model is powered by a 12-volt pump with a pendant switch control

Double acting hoist provides power up and down

LANDSCAPER BODIES

- A. SIDE ACCESS DOOR**
on curb side has 50” wide opening for pallets, balled trees, shrubs, bagged materials, etc. Side access door can be locked in the open position

B. STEP AND GRAB HANDLE
for the side access door for easy access to the cargo area

C. BOLT-ON, REINFORCED BULKHEAD PRE-PUNCHED
to accept optional cab guard and tarp options

D. SWING-OUT REAR GATES
with heavy duty hinges swing 270 degrees. Lockable in the open position
- E. REAR GATES**
are punched for proper airflow

F. HEAVY-DUTY CAM LOCK
on rear gates for load security and long-term durability

G. 40” TALL SIDES PANELS
are constructed of 14-gauge steel and reinforced by 13-gauge steel stakes. Side panels include tarp tie-down rail

H. LED CLEARANCE AND MARKER LIGHTS
meet FMVSS 108 requirements



FEATURES NOT SHOWN

- CLEARANCE LIGHTS WITH AUTOMOTIVE WIRE HARNESS**
provide trouble free service

FLOOR ASSEMBLY
10-gauge high strength steel floor plate with 10-gauge formed cross sills and 5” structural long sills
- WATER-BASED UNDERCOATING**
on underside of platform

ELECTRODEPOSITION PRIME-PAINT SYSTEM
provides superior corrosion resistance



REQUEST A QUOTE



Visit knapheide.com/quote and fill out the form to receive a quote and additional product information.

MODEL OPTIONS

LANDSCAPER MODEL	NOMINAL BODY LENGTH	STORAGE PACK OPTION	NOMINAL PACK LENGTH	BODY WEIGHT	CAPACITY
PLB-11-LCF-B	11'	KPLS-942463A	24"	2,019 lb.	10.2 cu. yd.
PLB-12-LCF-B	12'	KPLS-942463A	24"	2,159 lb.	11.6 cu. yd.
PLBTG-11-LCF-B	11'	KPLS-942463A	24"	2,082 lb.	10.2 cu. yd.
PLBTG-12-LCF-B	12'	KPLS-942463A	24"	2,222 lb.	11.6 cu. yd.
PLBTGC-11-LCF-B	11'	KPLS-942463A	24"	2,094 lb.	10.2 cu. yd.
PLBTGC-12-LCF-B	12'	KPLS-942463A	24"	2,234 lb.	11.6 cu. yd.

NOTE: Storage Pack is not available for 109" WB Isuzu chassis

WITHOUT STORAGE PACK

APPLICABLE CHASSIS	CA		WB		ENGINE TYPE	GVWR
	Standard	Crew	Standard	Crew		
NPR	86.5"	88.5"	109"	150"	Gas	12,000 lb.
NPR-HD	86.5"	88.5"	109"	150"	Gas	14,500 lb.
NPR	86.5"	-	109"	-	Diesel	13,000 lb.
NPR-HD	86.5"	88.5"	109"	150"	Diesel	14,500 lb.
NPR-XD	86.5"	88.5"	109"	150"	Diesel	16,000 lb.
NQR	86.5"	88.5"	109"	150"	Diesel	17,950 lb.
NRR	86.5"	-	109"	-	Diesel	19,500 lb.

WITH STORAGE PACK

APPLICABLE CHASSIS	CA		WB		ENGINE TYPE	GVWR
	Standard	Crew	Standard	Crew		
NPR	110"	114.5"	132.5"	176"	Gas	12,000 lb.
NPR-HD	110"	114.5"	132.5"	176"	Gas	14,500 lb.
NPR	110"	114.5"	132.5"	176"	Diesel	13,000 lb.
NPR-HD	110"	114.5"	132.5"	176"	Diesel	14,500 lb.
NPR-XD	110"	114.5"	132.5"	176"	Diesel	16,000 lb.
NQR	110"	114.5"	132.5"	176"	Diesel	17,950 lb.
NRR	110"	114.5"	132.5"	176"	Diesel	19,500 lb.

POPULAR OPTIONS



**COMBINATION
CLASS V
HITCH AND
ICC BUMPER***



**PULL TARP
SYSTEM***



**REAR CARGO
GATES WITH
TAILGATE**



**REAR CARGO
GATES WITH
TAILGATE AND
METERING
CHUTE**



**42" CAB
PROTECTOR
WITH 4 TIE
DOWNS***

** Available through Isuzu Road Ready Program*

KNAPHEIDE SUBFRAME HOIST FOR LANDSCAPER BODIES



- Double acting power up – power down for total load control
- Body Brace ensures operator safety while servicing the hoist
- Rugged steel lift arm construction provides stable lifting capacity
- Landscaper Hoist set at a 50 degree dump angle
- NTEA Hoist Class
- KHR-1516SF-ED is a Class 40 for 9', 11' and 12' Bodies
- Accommodate all domestic 34" chassis frame widths
- Rear Hinge mounts on top of the chassis after frame
- ED = 12 Volt electric pump with pendent switch control

KNAPPACKS

KNAPPACKS – LANDSCAPER STORAGE PACKS

Secure storage for hand tools, chain saws, string trimmers and supplies.

- 73" Tall Model KPLS-942473A for Class V and VI chassis 84" CA and longer with taller cabs

** Custom KnapPack or battery relocation required. Dependent upon chassis application*



STREET SIDE

- Street side - personal storage compartment (24"W X 20"D X 63"H or 73"H) with four combination stationary/swivel hooks with three point lockable compartment door

CURB SIDE

- Curb side - tool storage compartment (24"W X 74"D X 63"H or 73"H. 63" has 2 shelves and 73"H has 3 shelves) and a pull out bin
- Pull Out Bin extends 48" with punched sides and floor for easy clean out (19.5"W X 71"D X 10"H) with three point lockable compartment door

STEEL SERVICE BODIES

A. DOUBLE-SHELL, 20-GAUGE, TWO-SIDED A-40 GALVANNEAL STEEL
compartment doors

B. ADJUSTABLE SECURITY RING STRIKERS
provide a weather-tight seal

C. INTERIOR COVER
protects internal latch from damage

D. SLAM-LOCK TAILGATE
with one-hand center release

E. UPGRADED SURFACE MOUNT LIGHTING SYSTEM
features LED S/T/T and B/U, LED strobe option* with (8) selectable patterns, and built-in reflectivity for additional safety**

*Additional wire harness required for strobe lights
**Lights covered by 3-year limited warranty



*Body may be shown with optional features

FEATURES NOT SHOWN

EXCLUSIVE “RETURN FLANGE” FLOOR DESIGN
provides support

QUICK-MOUNT INSTALLATION
allows for fast, safe mounting

E-COAT PROTECTION
Knapheide Bodies are fully immersed in Knapheide's 12-step, electrodeposition prime paint system for superior corrosion resistance.

COMPARTMENT FEATURES



DOUBLE-SPRING OVER-CENTER RETAINER
on vertical compartment doors eliminate involuntary swing



NEOPRENE DOOR SEALS
protect compartments from the weather



CONTINUOUS STAINLESS STEEL HINGES
are pry-proof and corrosion-resistant



INTERIOR LIGHT GUARDS
protect recessed lighting and wiring

STANDARD SHELVING



STREET AND CURB SIDE FRONT VERTICAL COMPARTMENTS
Two adjustable divider shelves and dividers, with a 250-lb. capacity



STREET AND CURB SIDE FULL HEIGHT REAR VERTICAL COMPARTMENTS
One adjustable divider shelf and dividers, with a 250-lb. capacity



CURB SIDE HORIZONTAL COMPARTMENT
One adjustable divider shelf and dividers, with a 250-lb. capacity

60" tall bodies include an extra divider shelf in each compartment, including one in the streetside horizontal

POPULAR OPTIONS

BUMPERS

Knapheide bumpers are constructed with work in mind. With three configurations, we have a bumper for every need. Select bumpers available with KnapLiner coating for additional friction and durability.



HITCH RECESS BUMPERS



STRAIGHT BUMPERS

CANOPY ROOF

The canopy roof option allows you to fully enclose your cargo area. Canopy roofs are available in three heights, straight sides, and with stationary or telescopic roofs. Full width roofs are also available. For a tapered-side one-piece body design, take a look at our KUVcc product line.



STRAIGHT SIDES



TELESCOPIC ROOF



SIDE ACCESS DOORS



SIDE LADDER RACKS



REAR ACCESS DOOR



TELESCOPIC SLIDING ROOF

Telescopic sliding roofs offer a robust enclosure for the cargo space of your Service Body, allowing you to protect your tools and equipment from theft and weather.



CRANE REINFORCEMENT KIT

The crane reinforcement kit option allows you to incorporate a crane up to 4,000 lb. capacity (16,000 ft-lb. max.) onto the rear curb side corner of your body.

RACKS

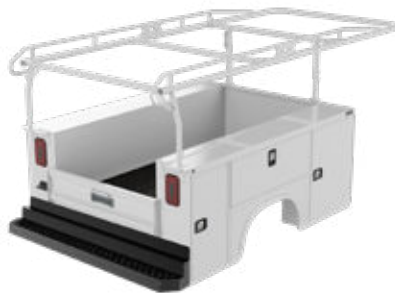
Adding a rack to your Service Body increases your storage space by getting your ladders and other long tools or equipment up and out of the way, making room to haul more items in your cargo area.



UTILITY RACK
1,000 lb. capacity -
forklift loadable



SIDE MOUNT
LADDER RACK
150 lb. capacity



OVERCAB
MATERIAL RACK
Kargo Master



OVERHEAD
LADDER RACK
300 lb. capacity

NOT PICTURED (APPLIES TO
SIDE MOUNT & OVERHEAD
LADDER RACKS):

LADDER RACK
ROLLERS

LADDER RACK
RAILS

POPULAR OPTIONS



MASTER LOCKS



POWER LOCKS



FRONT STROBE



LED COMPARTMENT LIGHTS



FLEX STEPS



CABLE STEPS



ALUMINUM DRAWERS



STEEL DRAWERS



ALUMINUM TREAD PLATE TRIM KITS



PULL-OUT SHELVES



CARGO TIE-DOWNS



ROCK GUARDS



MOUNTING KITS FOR REMOVABLE CRANE (SPITZLIFT)



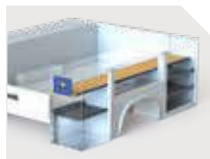
METER TRAY WITH HOLES



PULL-OUT TRAY



MODULAR CAB GUARD



REAR ACCESS DOOR WITH FULL-LENGTH SHELF



E-TRACK & ACCESSORIES



SINGLE POINT OR THREE POINT T-HANDLE



REAR ACCESS DOOR



GRAB HANDLES



BOTTLE GAS RETAINER



WHEEL CHOCK HOLDER - FENDER SKIRT

REQUEST A QUOTE



Visit knapheide.com/quote and fill out the form to receive a quote and additional product information.

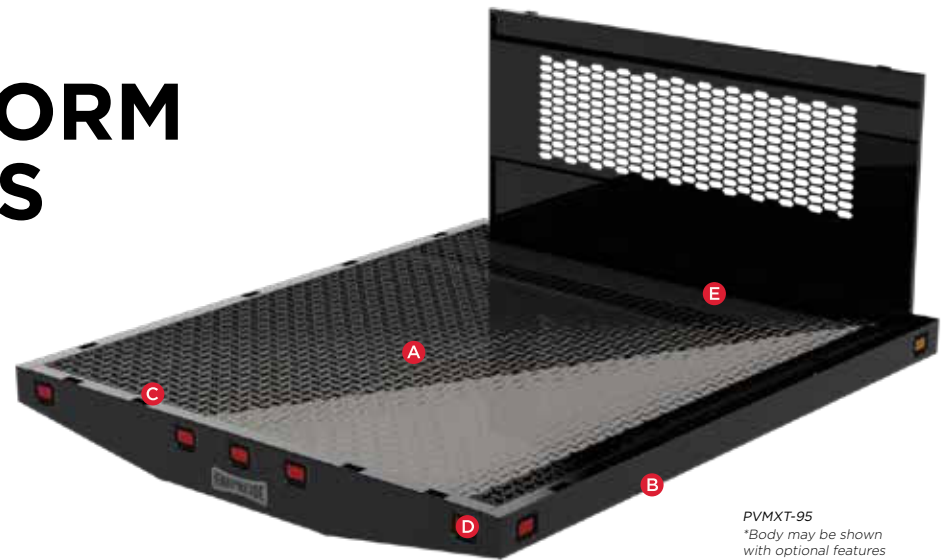


MODEL OPTIONS

APPLICABLE CHASSIS	CAB	CA	WHEELBASE	ENGINE TYPE	GVWR
NPR	Regular	86.5"	109"	Gas	12,000 lb.
NPR	Crew	88.9"	150"	Gas	12,000 lb.
NPR HD	Regular	86.5"	109"	Gas	14,500 lb.
NPR HD	Crew	88.9"	150"	Gas	14,500 lb.

MODEL	HEIGHT	WEIGHT	APPLICABLE CHASSIS	CA		WHEELBASE		ENGINE TYPE	GVWR
				Regular	Crew	Regular	Crew		
6127D-LCF	40"	1,526 LB.	NPR	86.5"	88.9"	109"	150"	Gas	12,000 lb.
			NPR-HD	86.5"	88.9"	109"	150"	Gas	14,500 lb.
6127DX46-LCF	46"	1,650 LB.	NPR	86.5"	88.9"	109"	150"	Gas	12,000 lb.
			NPR-HD	86.5"	88.9"	109"	150"	Gas	14,500 lb.

STEEL PLATFORM BODIES



PVMXT-95
*Body may be shown with optional features

Knapheide’s most popular platform, the Value-Master-X™ (PVMX), is a value-priced standard duty platform with distinctive tail skirt styling. It has been engineered to work in both hoist and non-hoist applications.

PVMX models are available in 8’-26’ lengths and for all size chassis. Chassis-specific models are available for Ford Transit and Ram ProMaster chassis cabs.

- A. MULTIPLE FLOORING OPTIONS:**
- Wood: 2” nominal treated #1 grade dense yellow pine with tongue and groove construction
 - Smooth steel: 10-gauge, high strength (50,000 psi yield strength)
 - Tread plate: 1/8” thick

B. SIDE AND END RAILS
constructed of formed 12-gauge high strength steel (50,000 psi)

C. REINFORCED INTERNAL STAKE POCKETS
are sized to accept 2x4 lumber as well as a wide array of Knapheide side options

D. CLEARANCE AND MARKER LIGHTS
are LED and meet FMVSS 108 requirements

E. DURABLE, OVEN-CURED HIGH GLOSS BLACK FINISH TOP COAT

FEATURES NOT SHOWN

STRUCTURAL LONG SILLS WITH GUSSETED CROSS MEMBERS:

- 5” on 12’ and shorter platforms
- 7” on 13’ and longer platforms
- 6” for SRW (80 Series) platforms

ELECTRODEPOSITION PRIME-PAINT SYSTEM
provides superior corrosion resistance

FORMED, 11-GAUGE HIGH STRENGTH (50,000 PSI) CROSS MEMBER
are spaced on 18” centers for 12’ and shorter platforms and 12” centers on 13’ and longer platforms

WATER-BASED UNDERCOATING
on underside of platform

SIDE OPTIONS

The addition of any of Knapheide’s extensive platform side options can transform your platform into a multi-functional body for many uses.



STAKE RACKS

Stake racks are compatible with all Knapheide platforms. Choose between interlocking clip or quiet latch stake racks. Racks are completely immersed in Knapheide’s electrodeposition prime-paint system and have a black painted finish.

Stake racks are available in 28” or 40” high sides.



REFUSE SIDES - PUNCHED

Punched refuse sides are compatible with the PVMX series platforms and the BH4094 bulkhead. Rear doors are equipped with a latch and bail system, pivot up to 270 degrees and can be secured in the open or closed position.

Refuse sides are available in solid or partially punched versions.



REFUSE SIDES - SOLID

Solid refuse sides are compatible with all the PVMX series platforms. Racks are completely immersed in Knapheide’s electrodeposition prime-paint system for superior corrosion resistance. Solid refuse sides can be used for a wide variety of applications.

Solid refuse sides are available in 40” height and 9’ and 12’ lengths only.



CONTRACTOR E-Z LOADER DROP SIDE PACKAGE

Drop side contractor packages are compatible with PVMX and PCH series platforms. Each side drops down to a full 180 degrees for easy access. Sides feature 45-degree slatted rub rails. The tailgate is double-acting and features a quick release handle for easy operation.

Drop sides are available in lengths from 8’ up to 12’.



CONTRACTOR FIXED SIDE PACKAGE

Fixed side contractor packages are compatible with PVMX and PCH series platforms up to 16’ in length. A stake pocket model bulkhead and 14’ high sides are standard. Tailgate may be lowered and secured parallel to the ground, dropped down to 180 degrees, or removed completely.



LANDSCAPER RACKS

Landscaper racks are compatible with 94 series PVMX platforms and BH, BHR and BHRB4094 bulkheads. They feature center punch panels and a quiet mount system that utilizes the stake pockets. The rear doors can pivot 270 degrees and lock into the full open position.

Landscaper racks are available for 9’, 12’ and 14’ models.

BULKHEAD OPTIONS

Knapheide bulkheads are built for functionality and style. The use of long lasting durable materials and strong structural design protect you from the heaviest load, keeping you and your truck safe.



BH SERIES

- Rectangular bulkhead
- Drop-in style with punched window
- Compatible with all platforms, recommended for stake racks
- Bulkhead material: 11-gauge high strength steel (102 Series 56" models are 10-gauge)
- Vertical post material: 13-gauge high strength steel



BHG SERIES

- Rectangular bulkhead
- Drop-in style with punched window and attached gussets
- Compatible with all platforms, recommended for stake racks
- Bulkhead material: 11-gauge high strength steel (102 Series 56" models are 10-gauge)
- Vertical post material: 13-gauge high strength steel



BHR AND BHRB SERIES

- Rectangular bulkhead, heavy duty reinforced
- Weld-on (BHR) and bolt-on (BHRB) style with punched window
- Compatible with all platforms
- Bulkhead material: 11-gauge high strength steel (102 Series 56" models are 10-gauge)
- Vertical post material: 11-gauge high strength steel outer post, 3" structural channel inner post



BHTS SERIES

- Westerner bulkhead
- Drop-in style with punched window
- Styled for Westerner platform
- Compatible with all platforms. Compatible only with 6", 12" and 28" racks
- Bulkhead material: 14-gauge high strength steel
- Vertical post material: 13-gauge high strength steel



BHT SERIES

- Tapered bulkhead
- Drop-in style with punched window
- Compatible with all platforms. Not compatible with racks or grain sides.
- Bulkhead material: 11-gauge high strength steel
- Vertical post material: 13-gauge high strength steel



BHRT SERIES

- Rectangular bulkhead
- Heavy duty, reinforced weld-on style with punched window
- Compatible with all platforms. Not compatible with racks or grain sides.
- Bulkhead material: 11-gauge high strength steel
- Vertical post material: 13-gauge high strength steel outer post, 3" structural channel inner post

*All bulkheads are primed with electrodeposition gray epoxy paint and finish coated with oven-cured black enamel paint. See Platform price pages for model specific information and applications.

POPULAR OPTIONS

STEEL TOOLBOXES

- Automotive quality 3-point T-handle latches
- Continuous stainless steel hinges are pry-proof and corrosion-resistant
- Extra heavy duty door chains installed
- Continuous door seals protect against water, dirt and dust
- Automotive grade, high gloss top coat
- Above body toolboxes available in white or black. Underbody toolboxes available in black.



POPULAR OPTIONS



APITONG WOOD FLOOR



POLY BOARD FLOOR



INTEGRATED D-RING TIE DOWNS



ROPE HOOK



UNDERBODY TIE-DOWN RAILS



UNDERBODY SLIDING TIE-DOWN CHANNEL



UNDERBODY STORAGE COMPARTMENT
Available in 8' and 10' lengths



RECEIVER HITCH



KNAPPACK
Also available in straight and tapered sides



ICC BUMPER



SPARE TIRE RETAINER

Other options not shown:

SMOOTH STEEL/ TREAD PLATE OVERLAY ON WOOD FLOOR

Available in 7-gauge or 10-gauge smooth steel, or 1/8" or 3/16" tread plate

MODEL OPTIONS

LENGTH	CA	DRW MODELS		
		WOOD	SMOOTH STEEL	TREAD PLATE
11'5"	86.5"-88.5"	PVMX-115	PVMXS-115	PVMXT-115
12'5"	86.5"-88.5"	PVMX-125	PVMXS-125	PVMXT-125
13'5"	110"-114.5"	PVMX-135	PVMXS-135	PVMXT-135
14'5"	110"-114.5"	PVMX(W)-145	PVMX(W)S-145	PVMX(W)T-145
16'5"	110"/114.5"-127.5"	PVMX(W)-165	PVMX(W)S-165	PVMX(W)T-165
18'5"	127.5"-153.5"	PVMX(W)-185	PVMX(W)S-185	PVMX(W)T-185
20'5"	153.5"-177.5"	PVMX(W)-205	PVMX(W)S-205	PVMX(W)T-205
22'5"	153.5"-189.5"	PVMX(W)-225	PVMX(W)S-225	PVMX(W)T-225
24'5"	153.5"-189.5"	PVMX(W)-245	PVMX(W)S-245	PVMX(W)T-245

*Models with (W) denotes 102" nominal width

PRODUCT FEATURES

ALUMINUM PLATFORM BODIES

A. COMPOSED OF MILITARY-GRADE ALUMINUM EXTRUSIONS
resulting in a body that is 40% lighter than steel, returning payload back to the operator

B. EXTERNAL 3/8" THICK MILITARY-GRADE ALUMINUM RUB RAILS
are attached to the sides with hardware for easy replacement in the event of damage
*not included on the 80" wide models

C. REINFORCED STAKE POCKETS
are sized to accept Knapheide side options

D. MILITARY-GRADE ALUMINUM EXTRUDED FLOOR PLANKS
perform double-duty, providing exceptional styling and strength for the floor, as well as unmatched structural strength as the cross sills

E. ALL LED CLEARANCE AND MARKER LIGHTS
for visibility and added safety



ALPB-89
*Body may be shown with optional features

UNDERSTRUCTURE FEATURES

SIDE RAILS
are extruded Military-grade aluminum channel with a tapered edge, providing protection to the floor planks and allowing for cargo and product to be loaded and unloaded without damage

INTEGRATED UNDER BODY TIE DOWNS
provides reinforced location for attaching cargo tie down straps

LONG SILLS
are an extended aluminum structural channel



SIDE OPTIONS

The addition of any of Knapheide's extensive platform side options can transform your platform into a multi-functional body for many uses.



STAKE RACKS
Stake racks are constructed with all-Military-grade aluminum extrusions for exceptional strength. Stake racks are made for bodies of all lengths and in 28" and 40" high sides. Rear body racks sections are available as well as swing-out rear sections.



12" DROP-IN RACKS
Drop-in racks provide a basic way to retain material in the load space and are available on 7'-18' length bodies.
**Optional bulkhead shown*



12" AND 18" DROP-DOWN RACKS
Drop-down racks provide hinge-down side and rear sections for enhanced retainment and access to the load space. Adding drop-down racks requires the removal of the rub rail from the side of the body.
Drop-down racks are available on 7'-12' length bodies.
**Optional bulkhead shown*



REFUSE SIDES PUNCHED OR SOLID
Refuse sides are compatible with a square bulkhead. Rear doors are equipped with a latch and bail system, pivot up to 270 degrees and can be secured in the open or closed position. Refuse sides are available in 8'-14' lengths only and may be used in a wide range of applications, from trash hauling to landscaping.



BULKHEAD OPTIONS

All aluminum Knapheide platform bulkheads are constructed of Military-grade aluminum extrusions and .09" Marine-grade aluminum sheeting.



ALBH SERIES
Rectangular, drop-in style with punched window. Available for all body models.



ALBHG SERIES
Rectangular bulkhead that attaches through pockets and bolt-on gussets with punched window. Available for all body models.



ALBHRB SERIES
Rectangular bulkhead with bolt-on under body reinforcements and punched window. Available for all 96" and 102" wide body models.



ALBHRBT SERIES
Tapered to better match the cab angle with bolt-on under body reinforcements and punched window. Available for all 96" wide bodies in 36" and 40" heights.

MODEL OPTIONS

LENGTH	CA	SRW MODELS (80" WIDE)	DRW MODELS (96" WIDE)	DRW MODELS (102" WIDE)
12'	86.5"-88.5"	-	ALPB-123	-
14'	110"	-	ALPB-143	-
16'	127.5"-153.5"	-	ALPB-163	ALPB-163W

COMMITMENT TO CORROSION RESISTANCE

STEEL

Corrosion won't be a concern when you buy quality Knapheide products. To give you the best corrosion protection, we utilize a state-of-the-art, custom-designed, 12-step, SST cathodic electrodeposition finishing system, called "E-Coat."

It bonds prime paint to steel by an electroplating process to give you a superior coat of primer, resulting in better corrosion protection compared to spraying methods.

This system allows us to create products with the highest level of corrosion resistance available.

ALUMINUM

Aluminum bodies are naturally corrosion resistant. Where steel fasteners are used, those fasteners are coated with "EcoGuard" to eliminate the interaction between the steel and aluminum.

This aluminum assembly method allows us to create products with the highest level of corrosion resistance available.



FOLLOW US
LIKE US
TAG US



**TEN YEAR,
LIMITED TIME
WARRANTY**
ALUMINUM PRODUCTS

**SIX YEAR,
LIMITED TIME
WARRANTY**
SERVICE PRODUCTS

**THREE YEAR,
LIMITED TIME
WARRANTY**
STEEL PLATFORMS



**NO RUST
THROUGH**



**FREE FROM DEFECTS
IN WORKMANSHIP &
MATERIALS**



**LATCHES AND LOCK
CYLINDERS WILL NOT
FAIL TO OPERATE**

TO LEARN MORE VISIT
www.knapheide.com/warranty



NEVER SETTLE

If you are going to be a leader, it takes more than building a high-quality product. It means never being totally satisfied with that product, no matter how high quality it may be. It requires constant vigilance and a willingness to take a chance on something new. And it means exceeding expectations every time. As the industry changes, one thing never will—our commitment to making customers like you as productive and efficient as possible. We know you don't settle, and we don't either. That's why we want you never to settle for anything less than Knapheide on the back of your truck.

KNAPHEIDE. NEVER SETTLE.



The Knapheide Manufacturing Company
1848 Westphalia Strasse | Quincy, IL 62305

217-222-7131

www.knapheide.com