



Base Rails BR20-6, BR40-6 & BR60-6 can be added to any Wide-2, Wide-4 or Wide-6 Shelf Staxx, respectively.

The Base Rail acts as a retaining lip for items placed underneath the Staxx unit and provides a 4" vertical lip.

The Base Rail comes with mounting screws and nuts.

NOTE: The Base Rail can also act as an additional floor mounting component (hardware provided upon request).



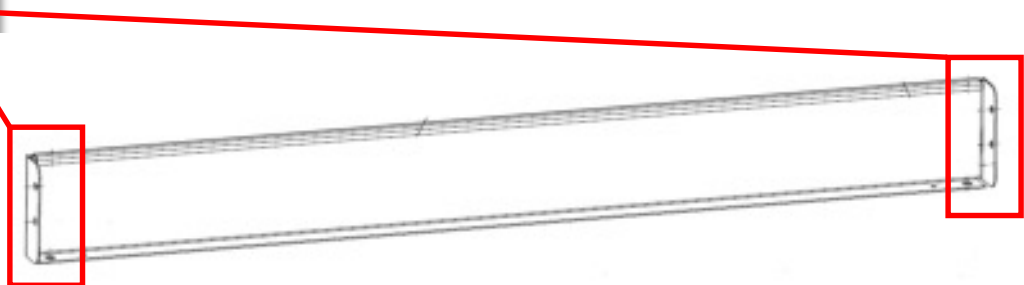
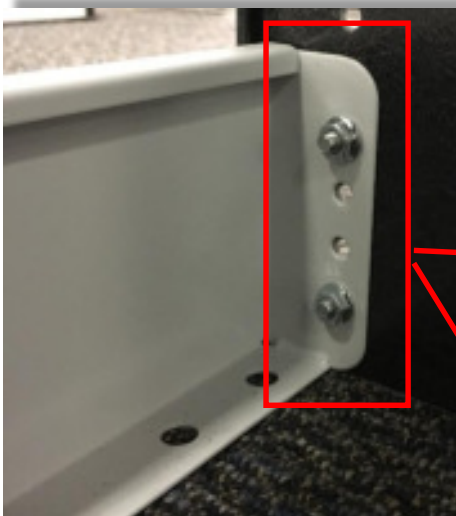
1000002820 HARDWARE KIT		
QTY	PART #	DESCRIPTION
4	71004896	SCREW (M6 X 16)
4	71003884	PAWL NUT (M6)

1. Identify location for Base Rail placement.

2. Place Base Rail between Staxx end panels.

3. Using hardware kit 1000002820, insert (2) M6x16 screws on either end of the Base Rail and tighten with M6 locking nuts.

NOTE: Do not overlap the floor angle and the Base Rail. See next page for mounting details.



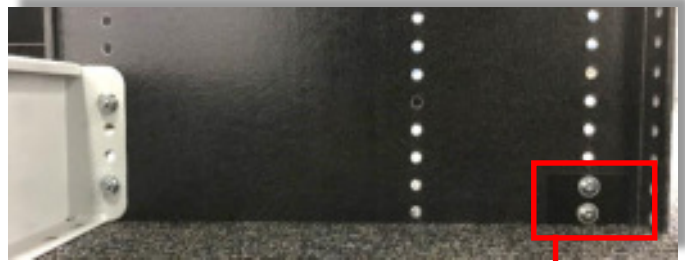
Mounting Base Rails in Combination with Floor Brackets

With the addition of the Base Rail, it is no longer possible to use the Staxx floor brackets in the standard method. Adding a Base Rail requires one of the following modifications to the position of the floor bracket.

1. Mounting the Base Rails in combination with a floor bracket.

One of the inside floor brackets must be moved to the opposite (outer) side of the Staxx end panel.

The front end of the floor bracket will fasten to the end panel along with the Base Rail. The rear end of the floor bracket will be mounted in conjunction with the Staxx backing plates (1000003016).



2. Mounting the Base Rails side-by-side.

One of the inside floor brackets must be moved to the opposite (outer) side of the Staxx end panel.

The floor bracket for the shared (center) Staxx panel must be cut to align with the holes at the rear of the Staxx panel. Mounting is still possible using the modified floor bracket.

The Base Rail will be used to mount the front edge of the Staxx panel.

