



The Cabinet Door Kit CD20-24 can be mounted on all Wide-2 Shelf Staxx. Each CD20-24 kit includes the cabinet door, 2 shelves, cabinet lock, C-clip, lock-strike plate and mounting screws and nuts.

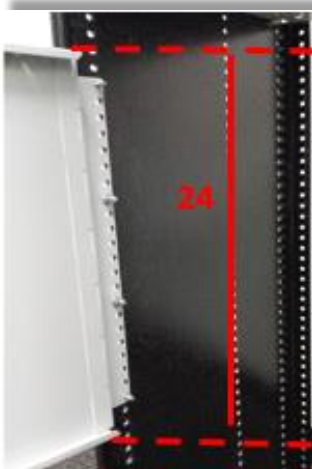
**NOTE:** Cabinet doors may be installed to open either right or left. Attach the cabinet door to the respective end panel based upon customer preference, product location and any obstructions.



### CD20-24 Assembly Items

1000002820 HARDWARE KIT (3ea)		
QTY	PART #	DESCRIPTION
4	71004896	SCREW (M6 X 16)
4	71003884	PAWL NUT (M6)
Loose Hardware		
2	71003884	PAWL NUT (M6)
2	6000002069	SCREW (M6 X 14)
3	71004525	RUBBER BUFFER 8 X 3
Locking Components		
1	551003847	CABINET LOCK
1	NOT AVAILABLE SEPERATELY	C-CLIP
1	1000003782	LOCK STRIKE PLATE



**Assembly:**

1. Determine mounting location and confirm the proper space is available.

**NOTE:** The Cabinet Door CD20-24 requires 24 grid holes for proper installation.

2. Attach the cabinet door to an end panel using one (1) of the hardware kits 1000002820 (4 total screws and nuts equally spaced as shown). Do not install nuts on the top (hole 23) and bottom (hole 2) screws at this time.

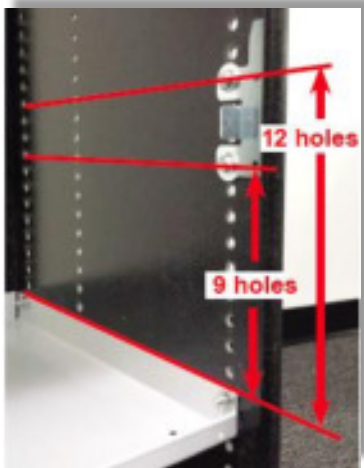
3. Position the lower tray on the bottom screw with the shorter tray lip at the front of the door opening. Install the remaining hardware (1000002820) in the corresponding shelf holes and tighten.

4. Turning it upside down, position the top tray with the front short lip of the tray facing the door opening. The tray should be installed on the topmost hole of the cabinet door. Install the remaining hardware (1000002820) in the corresponding holes and tighten.

**Optional Top Tray Installation: Using the Top Tray as a shelf**

With the short lip of the tray facing the door opening and pointing up, position the tray on the 25<sup>th</sup> hole and insert a screw. Install the remaining hardware (1000002820) in the corresponding holes and tighten.

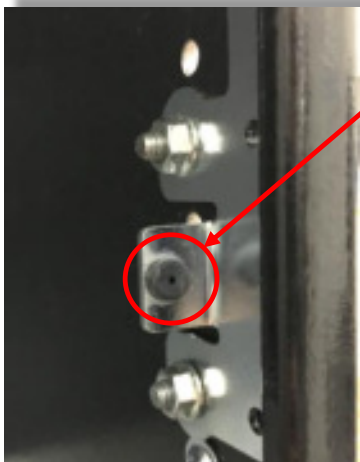


**Assembly Cont.:**

**5.** Install the lock strike plate using the provided M6 nuts and M6x14 screws. Insert screws at the 9<sup>th</sup> and 12<sup>th</sup> holes from the top of the lower tray (Do Not include the shelf hole when counting).

**NOTE:** The lock strike plate should be mounted with the long, straight edge against the front flange of the end panel.

**6.** Insert 1 rubber buffer (71004525) through the center flange of the lock strike plate.

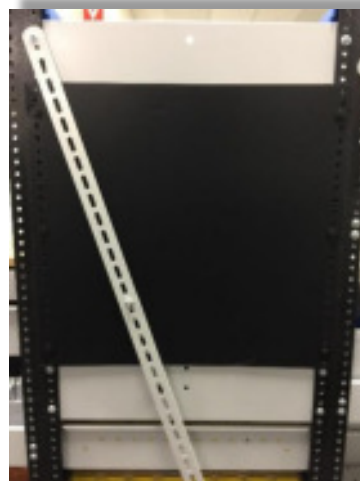
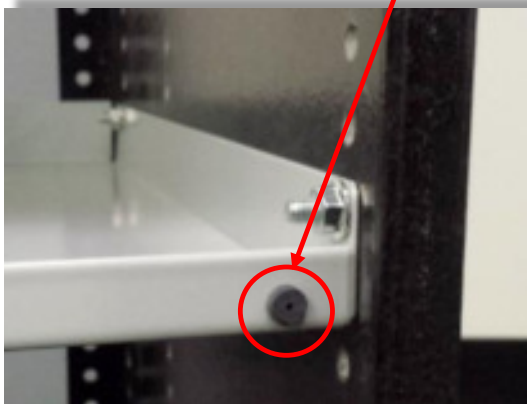


**7.** Install 1 rubber buffer on the outer edge of both the upper and lower tray lips (opposite hinged side of the assembly).

**NOTE:** Buffer is meant to keep the cabinet door from banging against the strike plate and damaging components. It also serves as a noise dampener.

**8.** Install the 25 grid backing panel on the backside of the Shelf Staxx using the provided push-rivets. Be sure to space push-rivets evenly.

For further details on installing the backing panel, please refer to the Exxpand Installation Instructions for Backing Panel Kits RPS20-25, 40-25 and 60-25.





### Assembly Cont.:

#### Inserting the Lock Cylinder:

1. Remove the black plug from the cabinet door. Position the lock cylinder so that the locking tabs are horizontal and the lock cylinder arm is vertical.

**NOTE:** The lock cylinder arm will point up or down depending upon the door orientation. A left opening door requires the cylinder arm to point up. A right opening door requires the cylinder arm to point down.

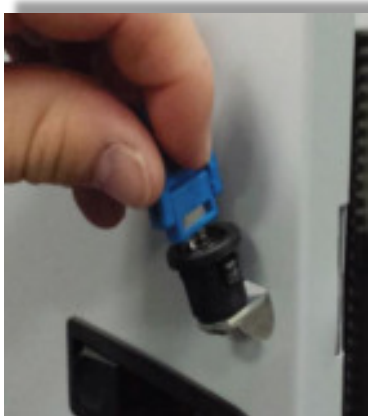
2. Insert the lock cylinder in the hole from the front side of the door with the lock cylinder arm still in the vertical position.

3. Apply firm pressure to the lock cylinder to seat it in the hole. It is fully seated when the locking tabs click open.

4. Secure the lock cylinder using the C-clip. The C-clip should be installed on the back side of the door with the curved side of the clip facing away from the door surface. Push the C-clip down until fully seated against the lock cylinder.



Lock tabs







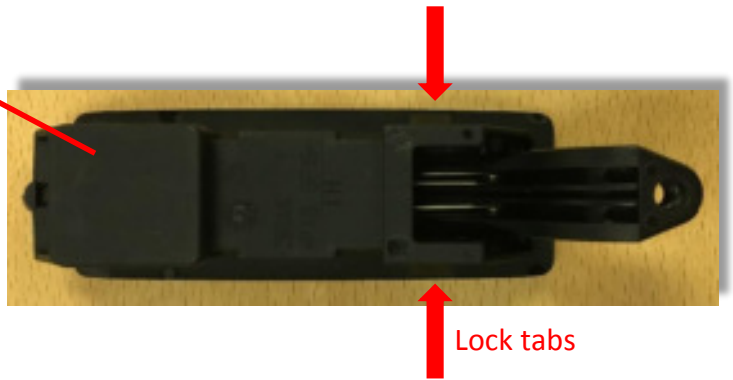
### Cabinet Latch: Removal and Replacement

Article: 551008304

The CD20-24 Cabinet Latch is a one-piece mechanism that can be easily replaced if broken or malfunctioning.

1. To remove the latch from the door simply depress the tabs on the back side of the latch and push the latch through the front of the door.

**NOTE:** The latch must be in the unlocked position for removal.



2. Installation is the reverse of removal. Insert the latch and apply slow pressure until the locking tabs click open.

