



GMC SAVANA/CHEVY EXPRESS PARTITION INSTALLATION INSTRUCTIONS



EXXPANDTM
www.sortimo.knapheide.com



The following instructions detail the procedure for installing a Sortimo By Knapheide Wire Mesh Partition in a GMC Savana / Chevy Express. This guide is intended to walk you through a step by step installation.

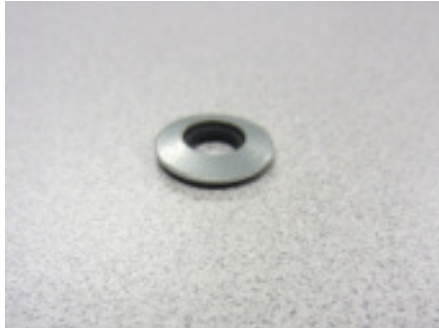
Contents

Hardware	3
Partition Preparation	5-8
Van Preparation	9-13
Partition Installation	14-16

Warranty and Limitation of Liability

SORTIMO N.A. warrants its van interior equipment to be free from defects in material and workmanship, under normal use and service for a period of three years or 36,000 miles, whichever occurs first, after the date of delivery to the original retail purchaser, when installed by an authorized SORTIMO Distributor and/or SORTIMO N.A. Upfit facility. Products not installed by an authorized SORTIMO Distributor and/or SORTIMO Upfit facility will not be subject to any warranty whatsoever and ANY AND ALL WARRANTIES WHATSOEVER RELATIVE TO SUCH SALES ARE HEREBY FULLY AND EXPRESSLY DISCLAIMED. This warranty only provides for the following remedy: repairs at the point of SORTIMO N.A.'s main place of business or any of its Distributor locations, or part replacements in part or in full to correct any defects related to material and workmanship. This warranty does not apply to products not installed by an authorized SORTIMO Distributor and/or SORTIMO N.A. Upfit facility.

HARDWARE



(8) Sealing Washer
.27 x .562
Part# 12051207



(3) Torx Screw
#14-10 x 3/4
Part# 12174074



(8) Hex Screw
1/4-20 x 1
Part# 12061081



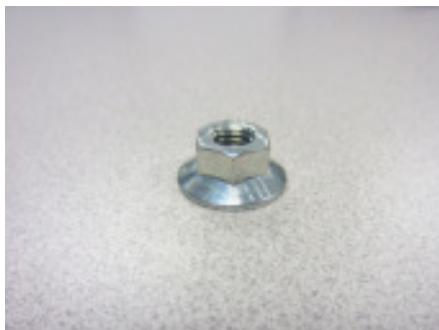
(12) Whiz Nut
1/4-20
Part# 12030144



(2) Set Screw
5/16-18 x 2-1/2
Part# 30708230



(8) Ribbed Riv-nut
1/4-20
Part# 57904110



(2) Flanged Locknut
5/16-18
Part# 30708270



(12) Carriage Bolt
1/4-20 x 3/4
Part# 30900780



(2) Spacer
3/4 O.D. x 7/16 I.D. x 3/4
Part# 31836150

HARDWARE



(2) Rivnut Plus
5/16-18
Part# 50903910



(2) Sealing Washer
.43 x 1.00
Part# 12051132



(1) B-Pillar Brace
Part# 26256495



(1) Bottom Brace
Part# 26256511



(1) Bulkhead Bracket
Part# 26255299

CAUTION: Use of hardware other than provided, or alternative installation methods other than outlined herein, may void the product warranty. Fasteners should be snug, but not overtightened. Use caution when using air or battery operated tools.

PARTITION PREPARATION

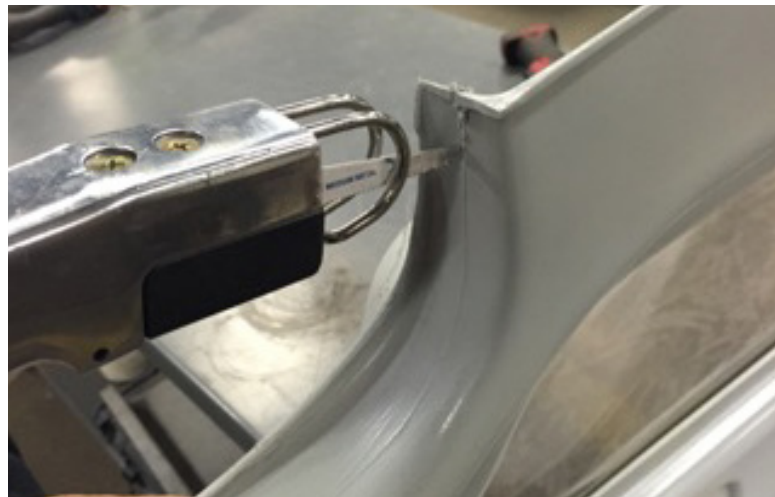


For vans with sliding doors, follow Steps 1.1 through 1.5. Otherwise skip to Step 1.6.

1.1 Upper right corner of partition must be trimmed for vans with sliding doors.



1.2 Note the trim line on the partition.



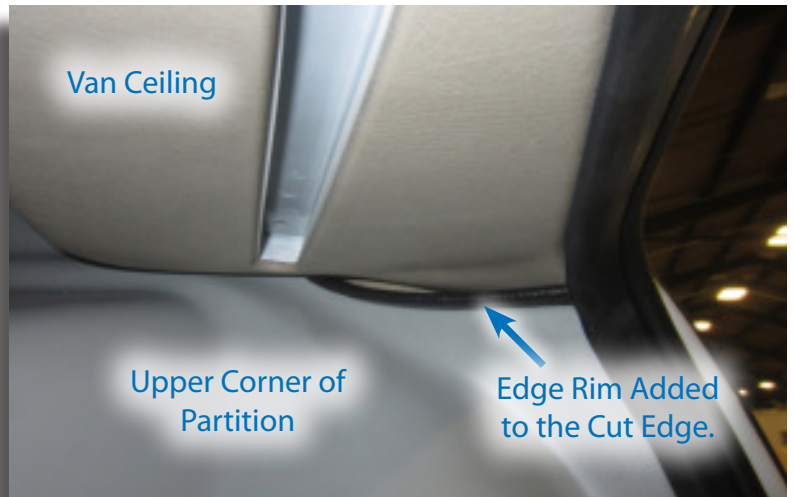
1.3 Use a reciprocating saw to trim the upper corner edge of the partition.

PARTITION PREPARATION

1.4 This photo shows the trimmed piece removed from the partition.



1.5 Prior to installing the partition in the van, install edge rim on the cut edge of the partition.



1.6 Place the partition cab side up and center the B-pillar brace in the molded channel. Use the brace as a template to drill 1/4" holes in the locations indicated.



PARTITION PREPARATION



1.7 Install carriage bolts at locations 1 thru 4 (see previous photo) from the cargo side of the partition and secure with 1/4" nuts from the cab side.



1.8 Repeat the above process at hole locations 5 & 6.



1.9 Drill 1/2" clearance holes in each of the end slots of the brace.

PARTITION PREPARATION

1.10 Place the bottom bracket on the cab side of the partition and align the ends of the bracket with the center of the outer ribs of the partition as shown. The bottom flange of the bracket must be flush with the bottom of the partition. Drill 1/4" holes in the center of the vertical slots at the locations shown. Install carriage bolts from the cargo side and secure hand tight with nuts on the cab side.



VAN PREPARATION

WARNING!



Prior to drilling into any part of a vehicle, check behind and underneath drilling and mounting locations for electrical wire, fuel lines, brake lines, and other critical vehicle components. Adjust the drilling location as required to avoid these components. Failure to do so can result in death or serious injury in addition to impairing critical vehicle functions.



2.1 Peel back the headliner to reveal existing holes in the roof bow. Enlarge the indicated holes with a 25/64" drill bit.



2.2 Install 1/4-20 Riv-nuts in the enlarged holes.

VAN PREPARATION

2.3 Install the roof bracket to the roof bow with 1/4-20 hex bolts.



2.4 Peel back the door seal to allow the partition to fit snug against the B-pillars.



2.5 Place the partition in the van firmly against the B-pillars.



VAN PREPARATION



2.6 Use the partition as a template to drill a 17/32" hole into the B-pillar.*



2.7 Use the bottom flange on the partition as a template to drill 25/64" holes through the cab floor.



2.8 Slide the partition back from its position and lift the floor mat to reveal the holes. Install 1/4-20 Riv-nuts in the holes.

** Driver & passenger sides.*

VAN PREPARATION

2.9 Use a hole saw to remove a portion of the plastic B-pillar trim where the hole drilled in Step 2.6 is located.*



2.10 Install 5/16-18 Riv-nuts in the B-pillars.*



2.11 B-pillar plastic removed and Riv-nut installed.*



* Driver & passenger sides.

VAN PREPARATION



2.12 Install the setscrew.* Make sure the hex socket head of the screw is facing out.



2.13 Slide a 3/4" nylon bushing over the setscrew.*

** Driver & passenger sides.*

PARTITION INSTALLATION

3.1 Re-install the partition in the van snugly against the bushings on the setscrews.



3.2 Install a sealing washer and 5/16 flanged locknut on the setscrew.*



3.3 Re-install the foam door seal.



* Driver & passenger sides.

PARTITION INSTALLATION



3.4 Use an allen wrench and a box wrench to tighten the flanged nut.* Make sure the allen socket head setscrew does not protrude beyond the outer surface of the flanged locknut.



3.5 Drill 1/8" holes through the three dimples in the top of the partition.



3.6 Secure the top of the partition with #14 Torx screws.

** Driver & passenger sides.*

PARTITION INSTALLATION

3.7 Secure the partition against the cab floor with 1/4-20 hex bolts.





EXXPANDTM

sortimo.knapheide.com | 844-EXXPAND

The Knapheide Manufacturing Company
1848 Westphalia Strasse
Quincy, IL 62305

Sortimo North America
3055 Northwoods Circle NW
Norcross, GA 30071

Document # 3897-01
April 2015