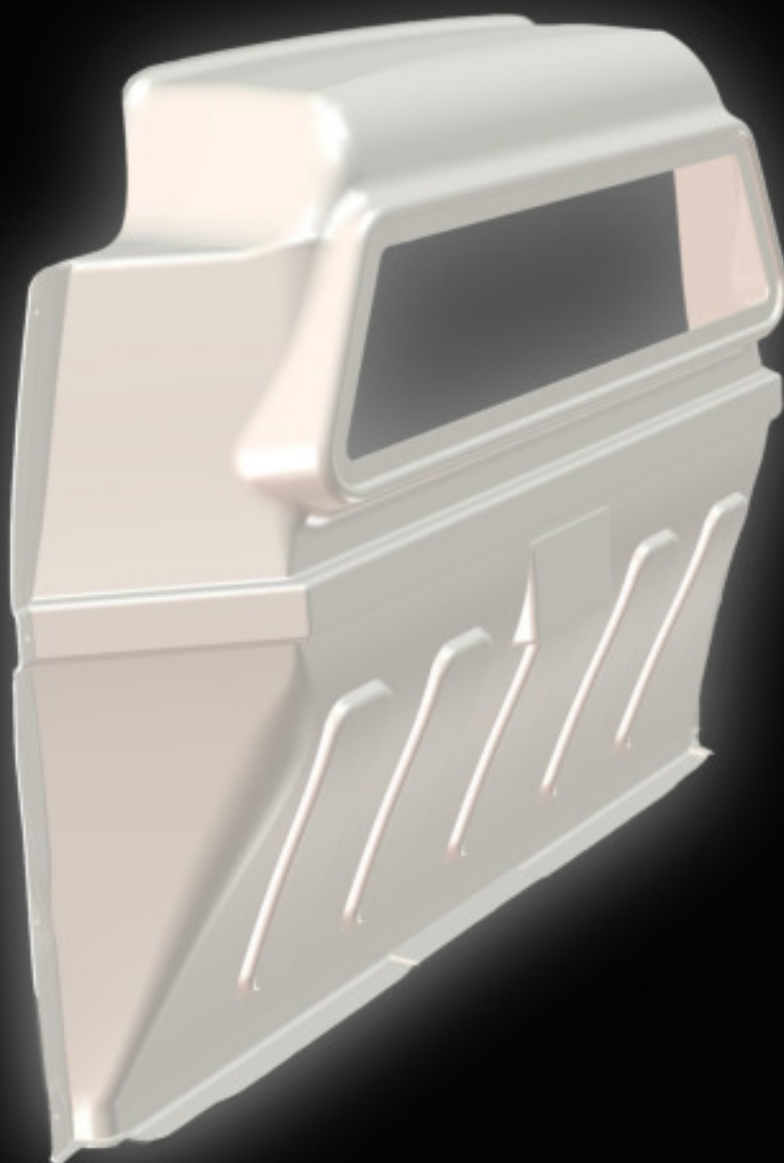




# FORD TRANSIT CONNECT PARTITION INSTALLATION INSTRUCTIONS



**EXXPAND**<sup>TM</sup>  
[www.sortimo.knapheide.com](http://www.sortimo.knapheide.com)

The following instructions detail the procedure for installing a Sortimo By Knapheide ABS Partition in a Ford Transit Connect. This guide is intended to walk you through a step by step installation.

## Contents

Hardware .....	3
Partition Preparation .....	4-8
Partition Installation .....	9-12

### **Warranty and Limitation of Liability**

*SORTIMO N.A. warrants its van interior equipment to be free from defects in material and workmanship, under normal use and service for a period of three years or 36,000 miles, whichever occurs first, after the date of delivery to the original retail purchaser, when installed by an authorized SORTIMO Distributor and/or SORTIMO N.A. Upfit facility. Products not installed by an authorized SORTIMO Distributor and/or SORTIMO Upfit facility will not be subject to any warranty whatsoever and ANY AND ALL WARRANTIES WHATSOEVER RELATIVE TO SUCH SALES ARE HEREBY FULLY AND EXPRESSLY DISCLAIMED. This warranty only provides for the following remedy: repairs at the point of SORTIMO N.A.'s main place of business or any of its Distributor locations, or part replacements in part or in full to correct any defects related to material and workmanship. This warranty does not apply to products not installed by an authorized SORTIMO Distributor and/or SORTIMO N.A. Upfit facility.*

**HARDWARE**



(6) Hex Bolt  
1/4-20 Self Threading  
Part# 26274647



(2) Bolt  
1/4-20 x 1-1/2  
Part# 31484070



(6) Carriage Screws  
1/4-20  
Part# 30900780



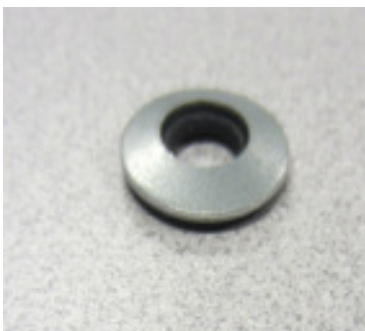
(6) Whiz Locknut  
1/4-20  
Part# 12030144



(2) Ribbed Riv-nut  
1/4-20  
Part# 57904110



(2) Flat Washer  
.31 x .734  
Part# 31043400



(6) Sealing Washer  
.33 x .75  
Part# 12051280



(2) Sealing Washer  
.43 x 1.00  
Part# 12051132



(1) B-Pillar Brace  
Part# 26259648

**CAUTION: Use of hardware other than provided, or alternative installation methods other than outlined herein, may void the product warranty. Fasteners should be snug, but not overtightened. Use caution when using air or battery operated tools.**

## PARTITION PREPARATION



### WARNING!

*Prior to drilling into any part of a vehicle, check behind and underneath drilling and mounting locations for electrical wire, fuel lines, brake lines, and other critical vehicle components. Adjust the drilling location as required to avoid these components. Failure to do so can result in death or serious injury in addition to impairing critical vehicle functions.*

**1.1** Drill two 1/2" holes through the two middle dimples located on the bottom of the partition.



**1.2** Lay the B-Pillar brace in position across the cab side of the partition.



## PARTITION PREPARATION



**1.3** Use the brace as a template to drill a 1/4" hole through the partition in the location shown.



**1.4** Install a carriage screw from the cargo side through the partition and brace and secure with a whiz lock nut on the cab side.

***THIS STEP MUST BE COMPLETED PRIOR TO ADVANCING TO THE NEXT STEPS!***



**1.5** Use the brace as a template to drill a 1/4" hole through the partition in the location shown.

## PARTITION PREPARATION

**1.6** Install a carriage screw from the cargo side through the partition and brace and secure with a whiz lock nut on the cab side.



**1.7** Skip two holes to the right of the previously installed screw and drill another 1/4" hole through the partition as shown.



**1.8** On the right side, skip two holes from the previously installed screw and drill another 1/4" hole through the partition as shown.



## PARTITION PREPARATION



**1.9** Drill a 1/4" hole through the partition through the hole in the angled portion of the brace.



**1.10** Repeat this procedure on the opposite side .



**1.11** Install carriage screws in each of the drilled holes from the cargo side and secure the brace to the partition with whiz locknuts on the cab side.

## PARTITION PREPARATION

**1.12** Carriage screws and whiz locknuts should be installed in the locations shown here.



**1.13** Drill 3/8" holes through the dimples in the partition at the locations indicated here.





## PARTITION INSTALLATION

### WARNING!



*Prior to drilling into any part of a vehicle, check behind and underneath drilling and mounting locations for electrical wire, fuel lines, brake lines, and other critical vehicle components. Adjust the drilling location as required to avoid these components. Failure to do so can result in death or serious injury in addition to impairing critical vehicle functions.*



**2.1** Pull back the cargo floor mat to reveal two centrally located pre-existing holes in the metal floor brace just behind the seats.



**2.2** Use a 1-1/8" hole saw to cut holes through the cargo floor mat where the two holes are located.

## PARTITION INSTALLATION

**2.3** Install two ribbed riv-nuts in each of the two centrally located holes in the floor brace.



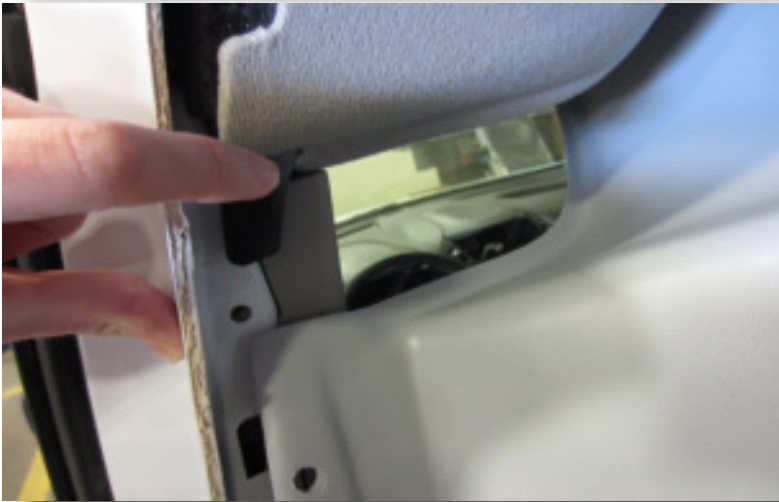
**2.4** Peel back the cargo door seal on each side of the van. Locate the 3 partition mounting locations per side. Use a 7/32" drill bit to increase the hole diameters for installation of 1/4-20 self-threading screws.



## PARTITION INSTALLATION



**2.5** Insert the partition in the cargo area of the van through the cargo door.



**2.6** Notice the black tabs in the top front corners of the cargo area. The partition must press against the tabs (the tabs will be sandwiched between the B-pillars and the partition). Line up the holes in the partition with the previously installed riv-nuts in the B-pillars. Firmly press the partition against the B-pillars.



**2.7** Secure the partition to the B-pillars with six 1/4-20 self-threading screws and six sealing washers.

## PARTITION INSTALLATION

**2.8** Secure the bottom of the partition to the cargo area floor with 3/8" rubber back washers, 1/4" flatwashers and 1/4-20 x 1-1/2" bolts.



**2.9** Re-install the cargo door seal.



**Sortimo**  
By  
**KNAPHEIDE**

**EXXPAND**<sup>TM</sup>

sortimo.knapheide.com | 844-EXXPAND

The Knapheide Manufacturing Company  
1848 Westphalia Strasse  
Quincy, IL 62305

Sortimo North America  
3055 Northwoods Circle NW  
Norcross, GA 30071

Document # 3937-01  
April 2016