

The Full Depth Long Component Tray (Depth 4) is compatible with 60 and 80-grid Staxx kits.

The Component Tray kits include mounting brackets, screws and nuts.

**NOTE:** The two component tray sections are joined together by M5 screws and nuts. The M5 hardware must be removed in order to extend the component tray and is also used to re-join the two sections later on.

**NOTE:** The Full Depth Long Component Tray is not meant for use with the 100-grid Staxx kits.

### Recommended Installation Steps

1. Attach mounting brackets to Staxx end panels.
2. Adjust length of component tray.
3. Attach component tray to mounting brackets.

1000002438 HARDWARE KIT		
QTY	PART #	DESCRIPTION
21	6000002069	SCREW (M6 X 14)
21	71003884	PAWL NUT (M6)
9	71003970	WASHER (6.4 X 18 X 1.6)

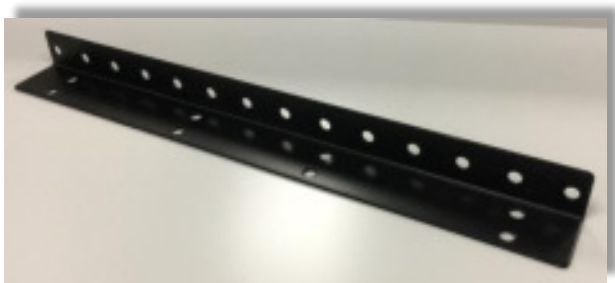
ADD. HARDWARE - FULL DEPTH COMPONENT TRAY		
QTY	PART #	DESCRIPTION
2	71004523	SCREW (M5 X 8)
2	71005158	PAWL NUT (M5)

### Attaching Mounting Brackets

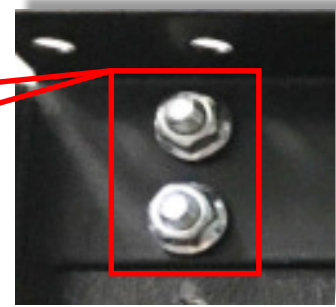
The Full Depth Long Component Tray kit includes three 14" mounting brackets.

Attach the mounting brackets using the M6x14 screws and M6 nuts from hardware kit 1000002438.

**NOTE:** Each mounting bracket uses 4 screws and nuts



### Attaching Mounting Brackets Cont.



Align the bracket so that the front and rear column of holes on the Staxx end panel match with the holes of the bracket. The top two holes at the front and rear of the end panel are used.

Brackets are universal so they can be installed on the left or right side of the end panel.

It is recommended to mount the brackets so they face towards the front of the vehicle.



**NOTE:** When mounting the component tray over multiple Staxx extensions it is not necessary to attach a bracket to every end panel. We recommend spacing the brackets as evenly as possible.



### Attaching the Component Tray

Place the component tray atop the Staxx module and align it over the mounting brackets. The component shelf should extend over the edge of the end panel so that the drop down door is not blocked.

**NOTE:** Do not place the drop down door too close to the edge of the end panel or to the rear flange. It may interfere with the door operation.

Mark all mounting points at this time with felt pen or punch – 2 per bracket. Drill all points using  $\varnothing$ M7 bit. Be sure to clear away all metal shavings.

Using the M6x14 screws, washers and M6 nuts, attach the component tray to the brackets.

