



The Narrow Depth Long Component Tray (Depth 3) is compatible with 100-grid Staxx kits.

The Component Tray kits include mounting brackets, screws and nuts. One section of the component tray will have a fold-down door; the other section will have a solid end cap.

**NOTE:** The Narrow Depth Long Component Tray is meant for use with the 100-grid Staxx kits but can also be used with 60 and 80-grid Staxx. Keep in mind that the Narrow Depth Component Tray will not utilize the full depth of the 60 and 80-grid Shelf Staxx.

### Recommended Installation Steps

1. Attach mounting brackets to Staxx end panels.
2. Attach component tray to mounting brackets.

1000002438 HARDWARE KIT		
QTY	PART #	DESCRIPTION
21	6000002069	SCREW (M6 X 14)
21	71003884	PAWL NUT (M6)
9	71003970	WASHER (6.4 X 18 X 1.6)

### Identifying the sections of the component tray

Narrow Depth Component Trays are generally made up of two pieces: Front and rear sections that are mated together with an adapter strip.

The Rear section (since it is normally facing the rear of the vehicle) is composed of a composite tray and a pre-assembled drop down door.

The Front section (since it is located closer to the front of the vehicle) is composed of a composite tray, adapter strip and pre-assembled end cap.



#### Attaching Mounting Brackets

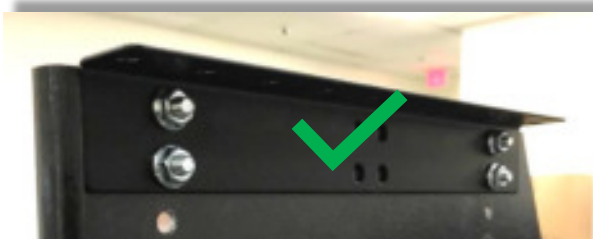
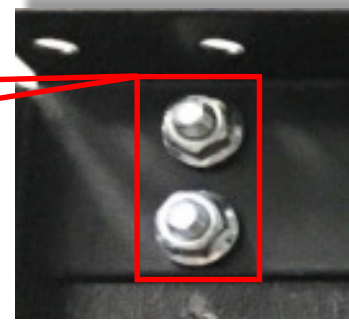
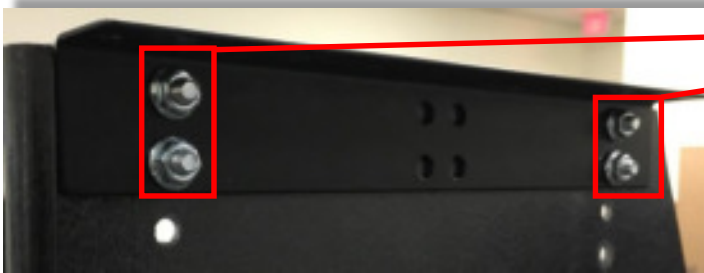
The Full Depth Long Component Tray kit includes three 10" mounting brackets.

Attach the mounting brackets using the M6x14 screws and M6 nuts from hardware kit 1000002438. Each mounting bracket uses 4 screws and nuts.

Align the bracket so that the front and rear column of holes on the Staxx end panel match with the holes of the bracket. The top two holes at the front and rear of the end panel are used.

Brackets are universal so they can be installed on the left or right side of the end panel.

**NOTE:** It is recommended to mount the brackets so they face towards the front of the vehicle.

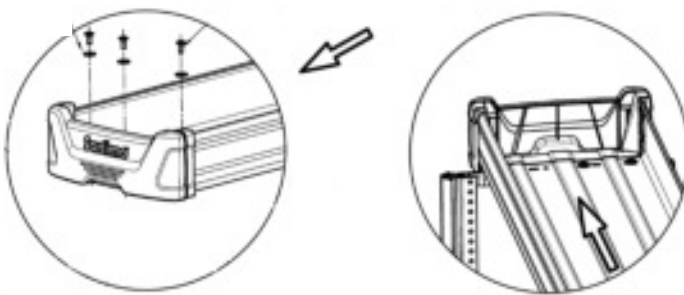


**NOTE:** When mounting the component tray over multiple Staxx extensions it is not necessary to attach a bracket to every end panel. We recommend spacing the brackets as evenly as possible.

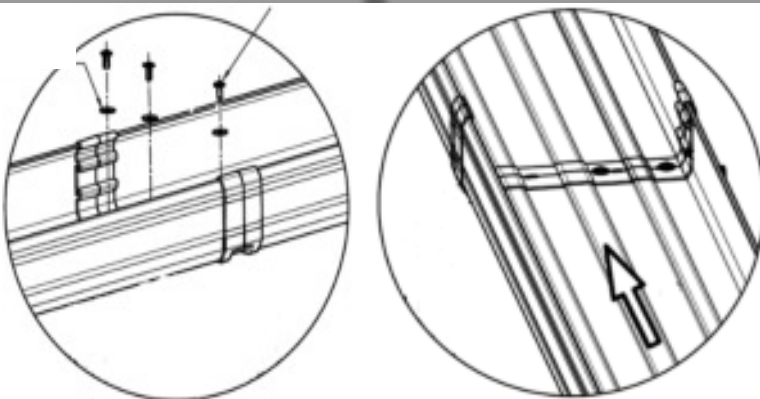
### Attaching the Component Tray

**NOTE:** Installation steps are based on standard installation. This requires the Rear component tray section to be attached first, followed by the adapter strip and the Front component tray section. Mounting brackets are oriented to face the front of the vehicle.

1. Place the Rear component tray section (with door) atop the Staxx module and align it over the appropriate mounting brackets. The Rear section should extend over the edge of the end panel so that the drop down flap is not blocked. Pre-drilled holes just behind the drop down flap will align with the mounting bracket. Using three (3) each of the M6x14 screws, washers and M6 nuts, loosely attach the component tray to the mounting bracket.



2. Connect the component tray adapter strip to the center Staxx end panel and mounting bracket using three (3) each of the M6x14 screws, washers and M6 nuts. Leave screws loose.





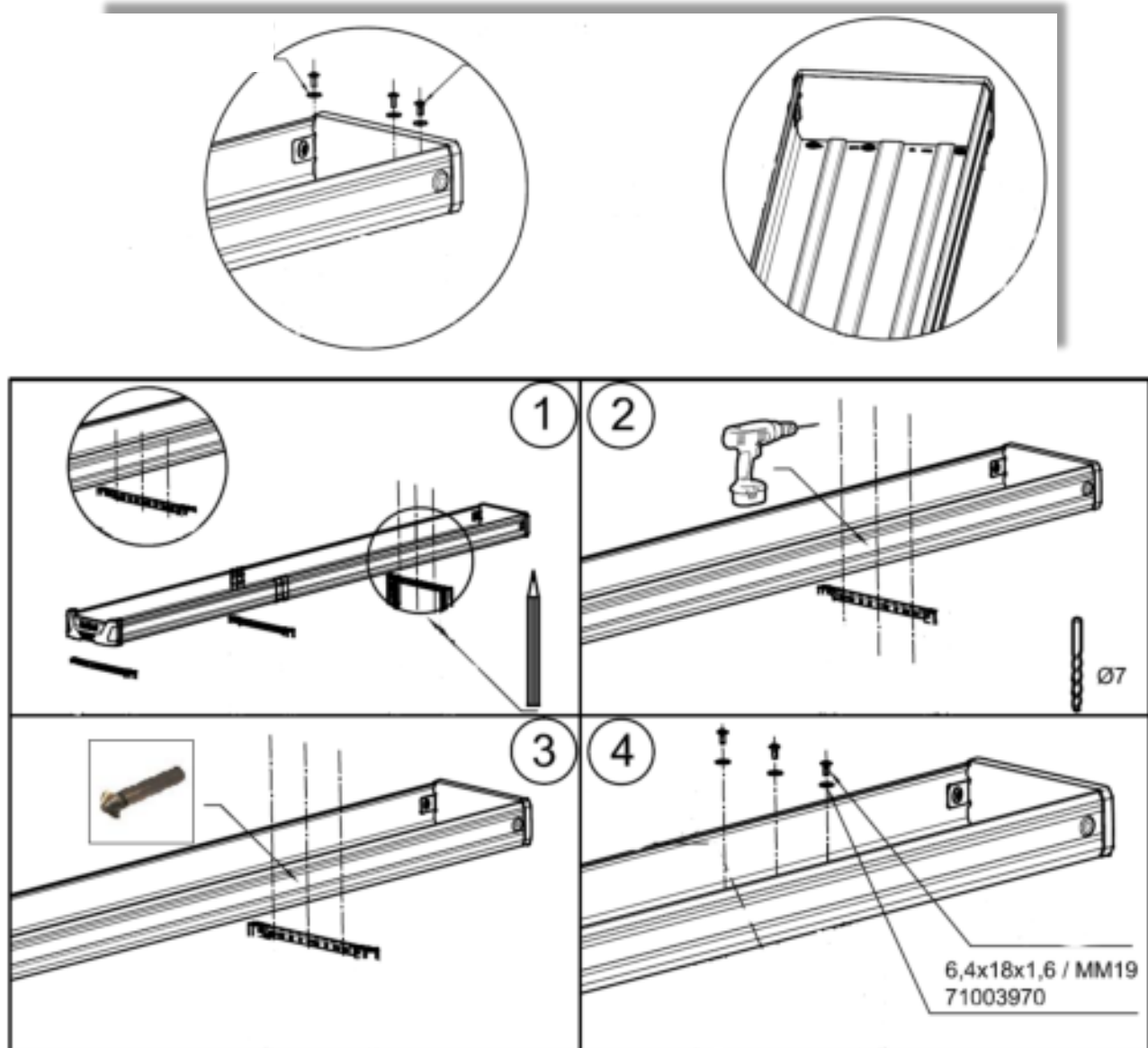
**Attaching the Component Tray Cont.**

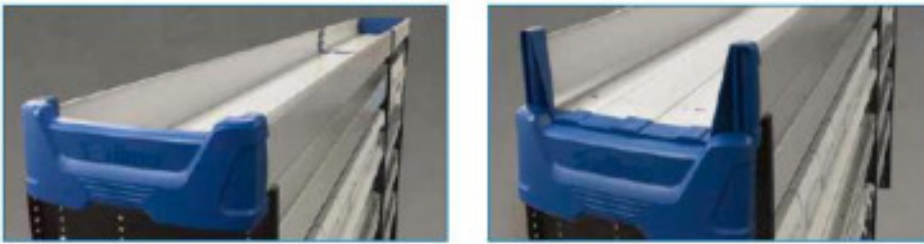
3. Connect the Front component tray section (with solid end cap) to the center adapter strip and the mounting bracket. Once the component tray section is fully seated into the adapter strip and aligned with the mounting bracket, mark 3 holes on the underside of the component tray and drill. Attach the Front component tray section using three (3) each of the M6x14 screws, washers and M6 nuts.

4. Tighten all mounting points.

**NOTE:** Pre-drilled mounting holes in the Front tray section will not align with holes in the mounting brackets and must be drilled.

**NOTE:** If an intermediate mounting position is used, mounting holes may be drilled through the component shelf. If so, mark all mounting points at this time with felt pen – 3 per bracket. Drill all points using  $\varnothing M7$  bit. Be sure to deburr all holes.



**Fold Down Flap: Operation, Assembly and Disassembly**

The fold down flap is designed to work in a specific fashion. Improper handling could damage the fold down flap.

1. Slide flap upwards.
2. Pull out slightly and draw the flap down.
3. To close simply reverse these steps.

**NOTE:** Pulling outward on the fold down flap without following these steps could lead to damage or failure of the drop down flap.

**Connecting the Component Tray Sections**

The sections of the Narrow Depth Component Tray are attached together at the blue, adapter strip. The sections are pressed into the adapter strip and do not require hardware.

Be sure to fully seat the component tray sections before aligning them with the mounting brackets and marking any drill holes.

