



NISSAN NV200/CHEVY CITY EXPRESS PARTITION INSTALLATION INSTRUCTIONS



EXXPANDTM
www.sortimo.knapheide.com



The following instructions detail the procedure for installing a Sortimo By Knapheide Partition in a Nissan NV200 / Chevy City Express. This guide is intended to walk you through a step by step installation.

Contents

Hardware	3-4
Partition Preparation	5-7
Partition Installation	8-15

Warranty and Limitation of Liability

SORTIMO N.A. warrants its van interior equipment to be free from defects in material and workmanship, under normal use and service for a period of three years or 36,000 miles, whichever occurs first, after the date of delivery to the original retail purchaser, when installed by an authorized SORTIMO Distributor and/or SORTIMO N.A. Upfit facility. Products not installed by an authorized SORTIMO Distributor and/or SORTIMO Upfit facility will not be subject to any warranty whatsoever and ANY AND ALL WARRANTIES WHATSOEVER RELATIVE TO SUCH SALES ARE HEREBY FULLY AND EXPRESSLY DISCLAIMED. This warranty only provides for the following remedy: repairs at the point of SORTIMO N.A.'s main place of business or any of its Distributor locations, or part replacements in part or in full to correct any defects related to material and workmanship. This warranty does not apply to products not installed by an authorized SORTIMO Distributor and/or SORTIMO N.A. Upfit facility.

HARDWARE



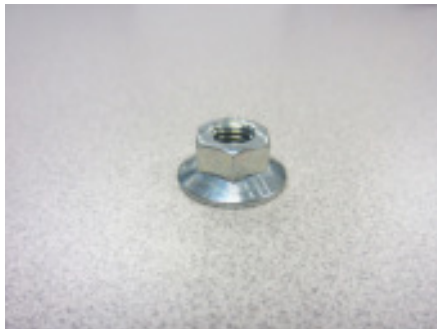
(8) Whiz Bolt
1/4-20 x 1
Part# 12065082



(6) Sealing Washer
.43 x 1.00
Part# 12051132



(13) Whiz Nut
1/4-20
Part# 12030144



(2) Flanged Locknut
5/16-18
Part# 30708270



(2) Set Screw
5/16-18 x 2-1/2
Part# 30708230



(13) Carriage Bolt
1/4-20 x 3/4
Part# 30900780

CAUTION: Use of hardware other than provided, or alternative installation methods other than outlined herein, may void the product warranty. Fasteners should be snug, but not overtightened. Use caution when using air or battery operated tools.

HARDWARE



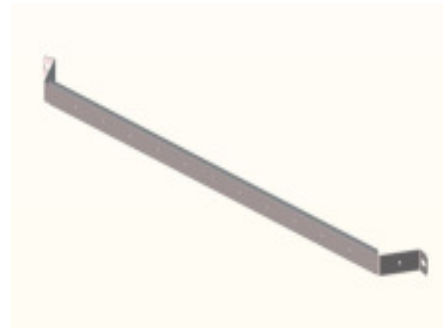
(2) Spacer
3/4 O.D. x 3/8 I.D. x 1/2
Part# 31836140



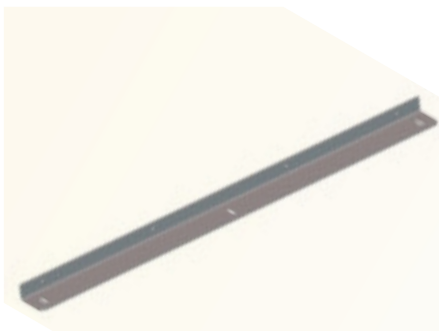
(2) Rivnut Plus
5/16-18
Part# 50903910



(8) Ribbed Riv-nut
1/4-20
Part# 57904110



(1) B-Pillar Brace
Part# 26256628

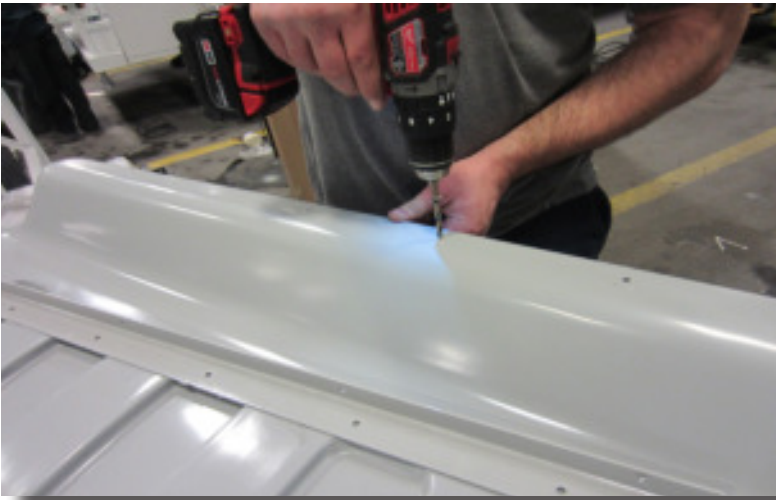


(1) Floor Brace
Part# 26256636

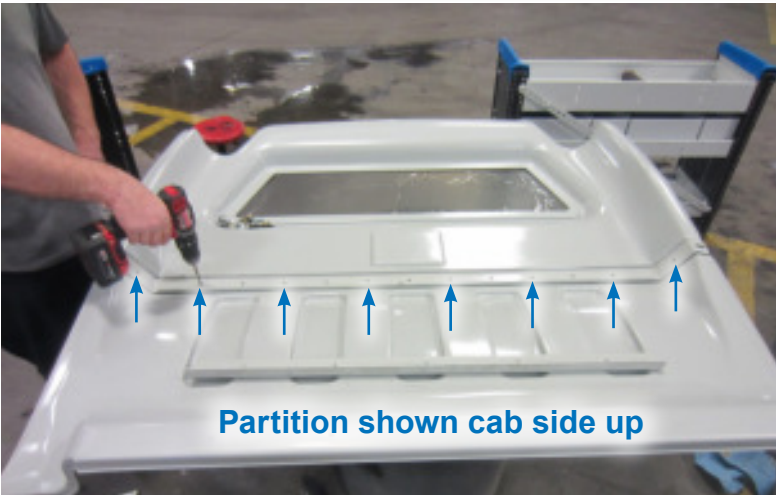
PARTITION PREPARATION



1.1 Use a 1/4" drill bit to drill through the four dimples in the top of the partition.



1.2 Drill 1/4" holes through each dimple along the bottom edge of the partition.



Partition shown cab side up

1.3 Lay the partition cab side up and place the middle brace (26256628) in position as shown. Use the brace as a template to drill 1/4" holes in locations indicated here.

PARTITION PREPARATION

1.4 Install carriage bolts from the cargo side and secure with 1/4" whiz nuts on the cab side at each location indicated in Step 1.3.



1.5 Position the floor brace (26256636) as shown at the bottom of the partition. Install 1/4" carriage bolts from the cargo side and secure with whiz nuts from the cab side. Keep hand tight until final installation in the van.



1.6 Drill 3/8" clearance holes at slots at each end of the brace.



PARTITION PREPARATION



1.7 The partition is now ready to install in the van.

PARTITION INSTALLATION



WARNING!

Prior to drilling into any part of a vehicle, check behind and underneath drilling and mounting locations for electrical wire, fuel lines, brake lines, and other critical vehicle components. Adjust the drilling location as required to avoid these components. Failure to do so can result in death or serious injury in addition to impairing critical vehicle functions.

2.1 Remove the front half of the rubber door seal on the left and right cargo door openings.



2.2 Open the back doors on the van and insert the partition into the van from the rear.



PARTITION INSTALLATION



2.3 Slide the partition forward to the front of the cargo area just behind the cab seats.



2.4 Push both sides forward to fit snugly against the right and left B pillars of the van.



2.5 Use the partition and brace as a template to drill a 1/4" hole through the B pillar trim on the right and left sides of the partition. Refer to Step 1.6 for hole locations.

PARTITION INSTALATION

2.6 Make sure the partition is positioned against the B pillars. Mark hole locations behind the cabin seats for the floor bracket.



2.7 Slide the partition back out of the way.



2.8 Use a stop collar when drilling into the van floor or ceiling.



PARTITION INSTALLATION



2.9 Drill three 1/4" pilot holes in the floor at the locations previously marked. Increase the hole size of each hole to 25/64" for installation of Rivnuts.



2.10 Remove the four rear plastic fasteners in the ceiling headliner.



2.11 Drill four 25/64" holes through the holes in the headliner into the van ceiling (use a drill stop).

PARTITION INSTALLATION

2.12 Install 1/4-20 ribbed riv-nuts in the previously drilled holes in the floor.



2.13 Install 1/4-20 ribbed riv-nuts in the holes previously drilled in the ceiling.



2.14 Use a 1" hole saw to drill through the plastic trim on the left and right B pillars.



PARTITION INSTALLATION



2.15 Drill a 17/32" hole through the pilot holes previously drilled into the metal of the left and right B pillars.



2.16 Install 5/16-18 Plus Nuts in the two holes in the B pillars.



2.17 Install the setscrews into the Plus Nuts and slip spacers over the setscrews.

NOTE: *The setscrews must be installed with the allen head end exposed!*

PARTITION INSTALLATION

2.18 Re-install the rubber weatherstripping around each cargo door opening.



2.19 Re-install the partition. Place a sealing washer over each of the setscrews.



2.20 Install a flanged locknut on each setscrew.



PARTITION INSTALLATION



2.21 Use a backup wrench (box wrench) and allen wrench to tighten the flanged locknut. The setscrew should not protrude past the outer surface of the flanged nut.



2.22 Secure the bottom of the partition to the van floor with 1/4-20 whiz bolts.



2.23 Secure the top of the partition to the van ceiling with 1/4-20 whiz bolts.



EXXPANDTM

sortimo.knapheide.com | 844-EXXPAND

The Knapheide Manufacturing Company
1848 Westphalia Strasse
Quincy, IL 62305

Sortimo North America
3055 Northwoods Circle NW
Norcross, GA 30071

Document # 3898-01
April 2015