



RAM PROMASTER CITY PARTITION INSTALLATION INSTRUCTIONS



EXXPANDTM
www.sortimo.knapheide.com



The following instructions detail the procedure for installing a Sortimo By Knapheide Partition in a Ram Promaster City van. This guide is intended to walk you through a step by step installation.

Contents

Hardware	3
Partition Preparation	4-5
Partition Installation	7-11

Warranty and Limitation of Liability

SORTIMO N.A. warrants its van interior equipment to be free from defects in material and workmanship, under normal use and service for a period of three years or 36,000 miles, whichever occurs first, after the date of delivery to the original retail purchaser, when installed by an authorized SORTIMO Distributor and/or SORTIMO N.A. Upfit facility. Products not installed by an authorized SORTIMO Distributor and/or SORTIMO Upfit facility will not be subject to any warranty whatsoever and ANY AND ALL WARRANTIES WHATSOEVER RELATIVE TO SUCH SALES ARE HEREBY FULLY AND EXPRESSLY DISCLAIMED. This warranty only provides for the following remedy: repairs at the point of SORTIMO N.A.'s main place of business or any of its Distributor locations, or part replacements in part or in full to correct any defects related to material and workmanship. This warranty does not apply to products not installed by an authorized SORTIMO Distributor and/or SORTIMO N.A. Upfit facility.

HARDWARE



(4) Hex Flange Screw
M8-1.25 x 25
Part# 31043320



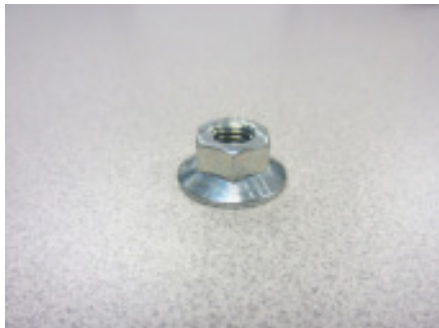
(12) Sealing Washer
.43 x 1.00
Part# 12051132



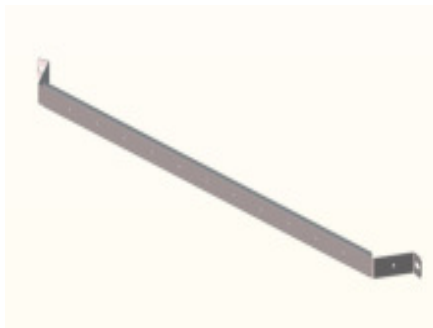
(8) Set Screw (Hex)
M6-1.00 x 60
Part# 32254280



(8) Spacer
3/4 O.D. x 5/16 I.D. x 3/4
Part# 31836150



(15) Flanged Whiz Nut
M6-1.0
Part# 31568940



(1) B-Pillar Brace
Part# 26264747

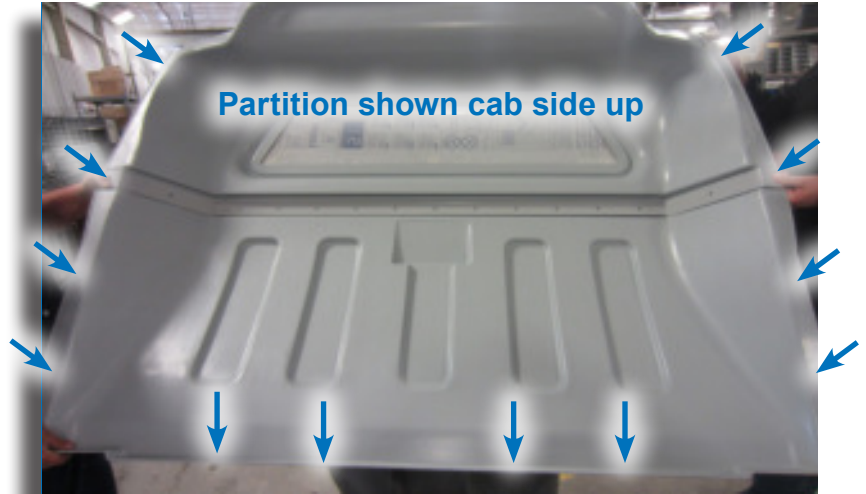


(7) Carriage Bolt
M6-1.00 x 20
Part# 31568930

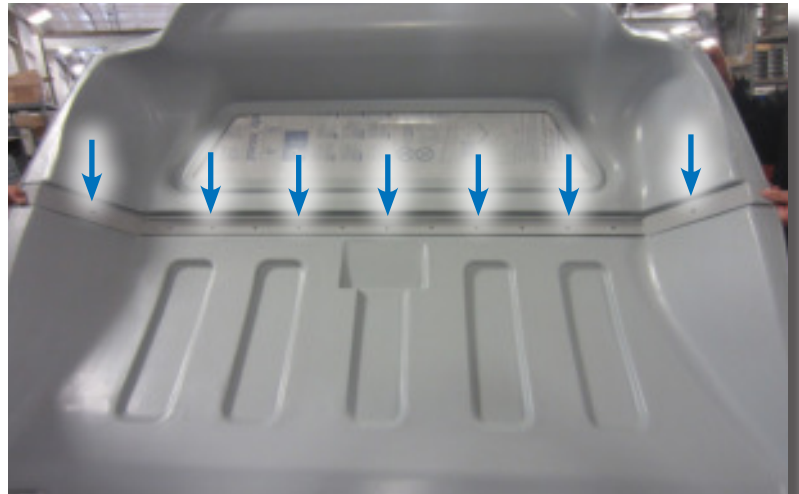
CAUTION: Use of hardware other than provided, or alternative installation methods other than outlined herein, may void the product warranty. Fasteners should be snug, but not overtightened. Use caution when using air or battery operated tools.

PARTITION PREPARATION

1.1 Lay the partition cab side up and drill $\frac{1}{4}$ " pilot holes at all dimple locations.



1.2 Position the B-pillar brace (26264747) into the molded belt line of the partition. Use the brace as a template to drill $\frac{1}{4}$ " pilot holes where indicated.



1.3 Secure the brace to the partition with seven M6-1.00 x 20 carriage bolts (cargo side) and nuts (cab side).



PARTITION PREPARATION



1.4 Re-drill each hole around the perimeter of the partition to 3/8”.



1.5 The partition is now ready to install in the van.

PARTITION PREPARATION

2.1 Remove both overhead trim pieces.



2.2 Remove the front half of the door seal on the left and right cargo door openings.



2.3 Insert the partition into the van from the side.



PARTITION INSTALLATION



2.4 Position the partition in the van firmly against the floor and B-pillars.

CAUTION!

The partition must sit firmly on the steel floor. If a floor mat or subfloor is installed, cut and remove a portion of the floor mat or subfloor to allow the drilled partition holes to align with the factory threaded inserts on the B-pillars. Excessive subfloor thickness will result in misalignment of B-pillar holes and distortion at the headliner.



2.5 Use the partition as a template to mark holes 1 thru 8 to be drilled into the van's interior.

* Make sure holes 9-12 align with the factory threaded inserts on the cab side.



2.6 Remove the partition from the van and prepare to drill the marked holes.

PARTITION INSTALLATION

2.7 Use a 1-1/8" hole saw to drill the 8 holes in the marked locations on the B-pillars.



2.8 Deburr all the holes.



2.9 Install M6 set screws and 3/4" spacers in the 8 holes. The hex end of the set screw must face outward.



PARTITION INSTALLATION



2.10 Re-insert the partition into the van firmly against the B-pillars.



2.11 Make sure all 8 set screws protrude through the perimeter holes.



2.12 Install M6 flange nuts and washers on each set screw to secure the partition to the B-pillars. Use an allen wrench and back-up wrench to tighten the flange nuts and set the depth of the setscrew.

PARTITION INSTALLATION

2.13 The outer ends of the set screws should only protrude slightly from the flange nuts.



2.14 Secure the bottom of the partition to the van floor (in cab area) with four M8 hex flange screws and washers.



2.15 Re-install the two overhead trim pieces.



PARTITION INSTALLATION



2.16 Re-install the cargo door seals.



2.17 Installation is complete.



EXXPANDTM

sortimo.knapheide.com | 844-EXXPAND

The Knapheide Manufacturing Company
1848 Westphalia Strasse
Quincy, IL 62305

Sortimo North America
3055 Northwoods Circle NW
Norcross, GA 30071

Document # 3934-02
May 2017