

Kit overview:

The CC4 & CC6 can be mounted on all wide-4 and wide-6 Shelf Staxx. Each kit includes the clamp assembly kit (1), hardware kit 1000002820 (1), wide-4 or wide-6 retention rods (2) and M6x25 screws (4). The clamp assembly kit is made up of the blue control arm, foam stopper, threaded plugs, closeout cap and mounting brackets.

Left/Street side – Right/Curb side



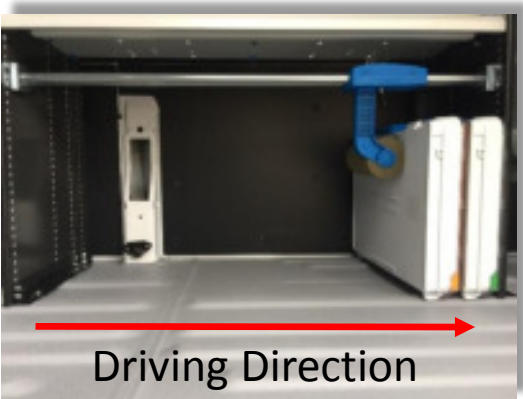
Orientation of the Case Clamp:

The left or right orientation of the Case Clamp is determined by either a street side or curb side positioning of the Case Clamp.

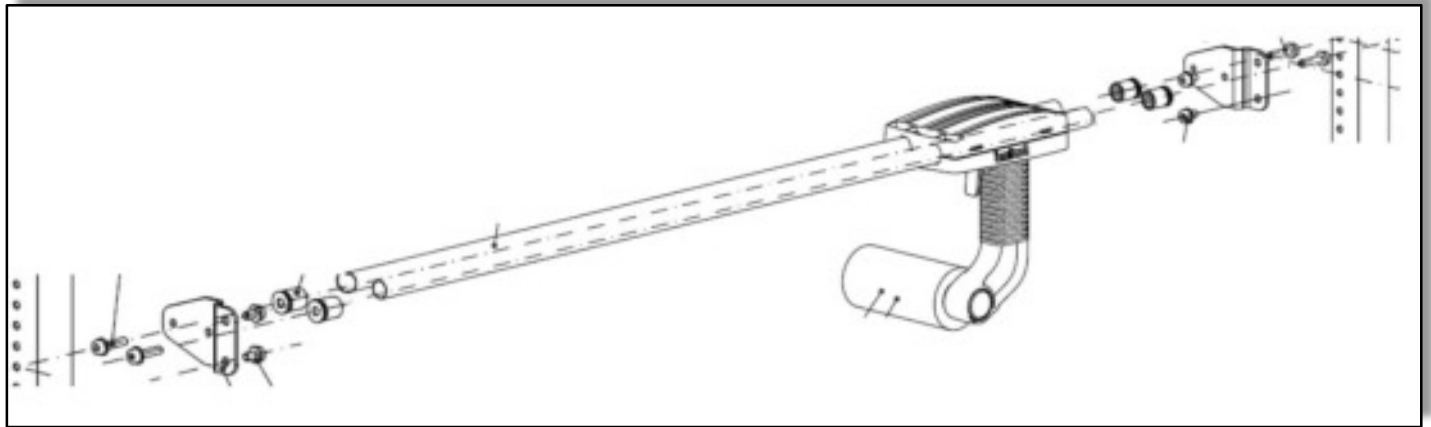
NOTE: Final position of the Case Clamp should be known prior to assembly.



NOTE: The foam stopper is meant to point inside the Shelf Staxx.



NOTE: The Case Clamp control arm will always point in the driving direction.



Assembly & Installation

1000002820 HARDWARE KIT		
QTY	PART #	DESCRIPTION
4	71004896	SCREW (M6 X 16)
4	71003884	PAWL NUT (M6)
Loose Hardware		
4	71003820	SCREW (M6x25)

NOTE: Final position of the Case Clamp should be known prior to assembly as it may be difficult to reorient the control arm and foam stopper once assembled.



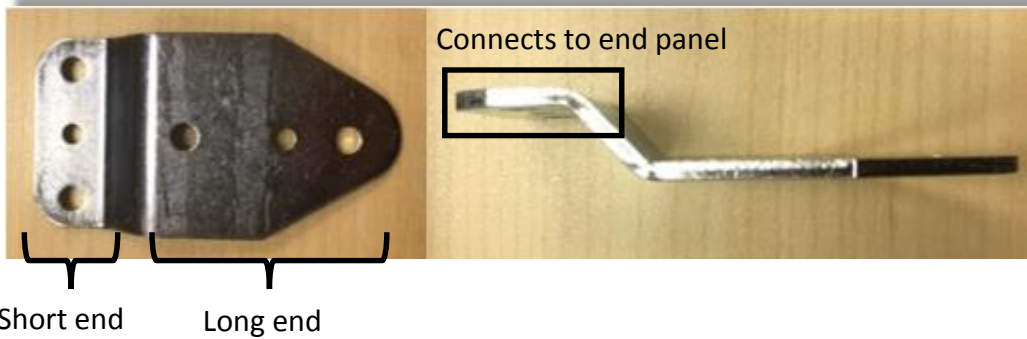
1. Insert threaded plugs (4) into all 4 open ends of the retention rods. Be sure threaded plugs are fully seated before moving to next step.

NOTE: Finned end of the plug is inserted into the rod.



2. Depress the clamp trigger and insert retention rods through the Case Clamp. Stop when retention rods are even on both sides of the clamp body.



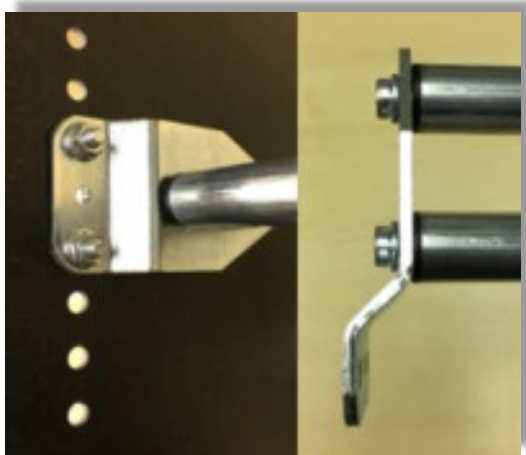


3. Attach the mounting brackets to the retention rods using the M6x25 screws (4). The rods will attach to the longer end of the bracket through the outer holes (center hole is not used). This end of the bracket will be oriented horizontally for installation.

NOTE: The short end of the bracket must face outwards.

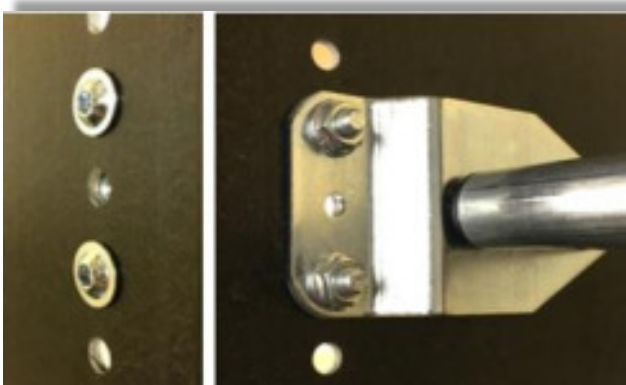
4. Determine desired position for the Case Clamp.

NOTE: The Case Clamp may be installed at floor level or above a shelf.



5. Attach the assembly to the left and right end panels using the supplied hardware kit 1000002820. Use the outer holes of the short end of the bracket (center hole is not used). This end of the bracket will be positioned vertically along the holes of the end panel.

NOTE: Be sure to mount brackets at the same grid height on both the left and right end panels.

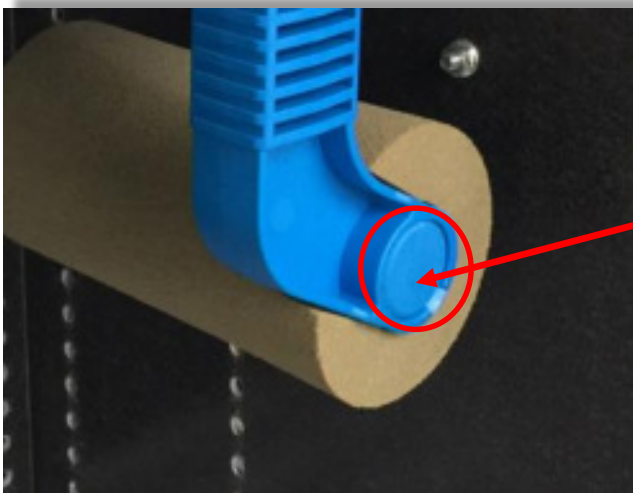




6. Addition of the foam stopper. The foam stopper is manufactured with a cutout on the side that attaches to the control arm. Fit the cutout end of the foam stopper into the control arm and apply pressure until the two pieces click together.

NOTE: The foam stopper is meant to point inside the Shelf Staxx.

7. Insert the blue closeout cap into the opposite side of the control arm.



NOTE: Positioning the mounting brackets on the end panels at grid heights 24 and 26 will allow for 16" of clearance.

