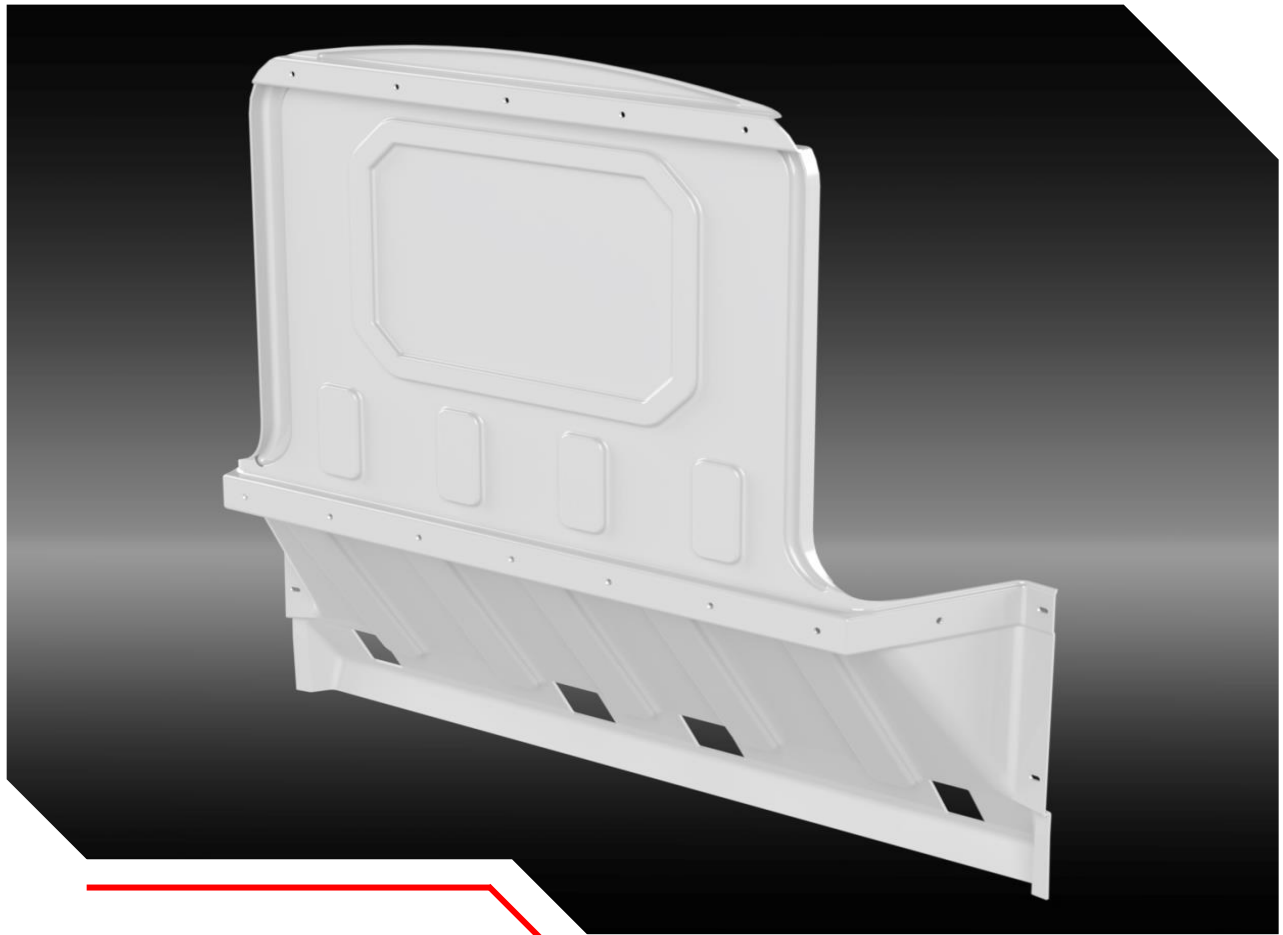


// K NAPHEIDE UTILITY BODY

# ***MULLEN BULKHEAD INSTALLATION INSTRUCTIONS***



**KNAPHEIDE PARTITION INSTALLATION INSTRUCTIONS**

**INTRODUCTION** //

The following instructions detail the procedure for installing a Knapheide ABS Bulkhead in an Mullen Van.

**TABLE OF CONTENTS**

HARDWARE.....3  
INSTALLATION INSTRUCTIONS.....4



The Knapheide Product Support Center  
1848 Westphalia Strasse | P.O. Box 7140 | Quincy, IL 62305

P: 217-592-5233 | productsupport@knapheide.com

Knapheide product warranty information can be found at

<https://www.knapheide.com/files/source/knapheide/Service/Knapheide-Warranty.pdf>

This document must not be copied or communicated to a third party without the expressed authorization of The Knapheide Manufacturing Company.

FOR REF ONLY

Printed copies are uncontrolled.

**// HARDWARE**



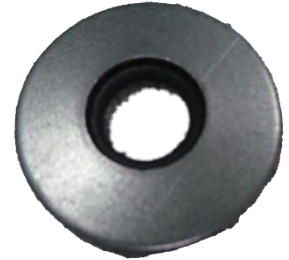
Riv-nut Plus 5/16-18  
50903910



Carriage Bolt 1/4-20  
30900780 Qty. 16



Flange Top Lock Nut  
5/16-18  
30708270 Qty. 4



Sealing Washer  
.43 x 1.00  
12051132 Qty. 4



Set Screw 5/16-18  
30708230 Qty. 4



Whiz Nut 1/4-20  
12030144 Qty. 16



Nylon Spacer  
33018330 Qty. 4



M8-1.25 x 30 Bolt  
33102160 Qty. 2

**CAUTION: Use of hardware other than provided, or alternative installation methods other than outlined herein, may void the product warranty. Fasteners should be tightened to called-out specifications or use the Fastenal website torque calculator for any hardware not called out. Use caution when using air or battery-operated tools.**

## // INSTALLATION INSTRUCTIONS



### **WARNING!**

*Before drilling into any part of a vehicle, check behind and underneath drilling and mounting locations for electrical wire, fuel lines, brake lines, and other critical vehicle components. Adjust the drilling location as required to avoid these components. Failure to do so can result in death or serious injury in addition to impairing critical vehicle functions.*

1. Remove pushpins holding the headliner to the roof bows.



2. Drop the headliner



3. Place 1 strip of Duct tape on each side of the roof bow to hold it to the roof when the bolts are removed in step 10.



4. Put the headliner back in place but do not reinstall pushpins

5. Using the pushpin holes in the headliner above the driver's seat as a center point reference, measure 5" and 7" from the bottom of the headliner.

6. Measure .875" towards the vehicle front from the 5" and 7" marks.



7. Measure 3.5" toward the rear of the vehicle, from the .875" marks. This will make a rectangular cut that is 3.5" long and 2" tall.



8. Use a box cutter or razor knife to cut the rectangle marked in the previous steps. **CAUTION!! DO NOT HAVE THE BLADE EXTENDED OUT MORE THAN .50" TO AVOID AIRBAGS AND WIRING.**

9. Repeat steps 5 – 8 on the opposite side of the vehicle.

10. Remove the bolts holding the base of the roof bow to the vehicle on both sides.





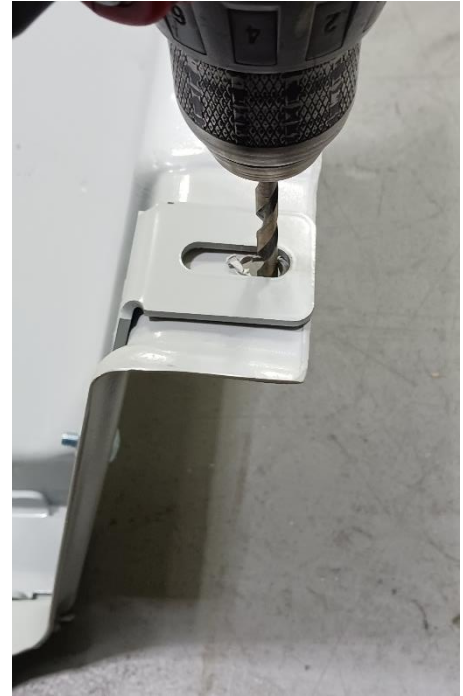
11. Install the bracket, 34903791, to the roof bow on the passenger side using (1) M8-1.25 x 30mm bolt 33102160. Install the bracket, 34903700, to the roof bow on the driver side using (1) M8-1.25 x 30mm bolt 33102160.

12. Place the mid brace, 34835154, in the mid brace slot on the bulkhead and drill out all (9) holes with a .25" drill bit.



13. Install all (9) 1/4"-20 x .75" carriage bolts, 30900780, with the head on the rear of the bulkhead using (9) 1/4"-20 whiz nuts, 12030144.

14. Using a 5/16" drill bit, drill out the far side of both slots where the mid brace contacts the bulkhead.



15. Using a 5/16" drill bit, drill a hole in the bottom LH and RH slots on the bulkhead where the bulkhead will secure to the b-pillar.



16. Using the upper brace, 34903508, as a guide, drill all holes in the upper channel of the bulkhead.



17. Install all (7) ¼"-20 x .75" carriage bolts, 30900780, with the head on the rear of the bulkhead using (7) ¼"-20 whiz nuts, 12030144. Remove the nuts from the (4) outside carriage bolts, leaving bolts in the bulkhead, to assist in installing the bulkhead to the upper brackets 34903791 and 34903700.



18. Place the bulkhead into the vehicle and snug it up against the upper brackets and b-pillar trim.



19. Mark all (4) holes to drill on the b-pillar, then remove the bulkhead.

20. Using a 1" hole saw, drill all (4) holes in the b-pillar trim (may need to remove door trim).

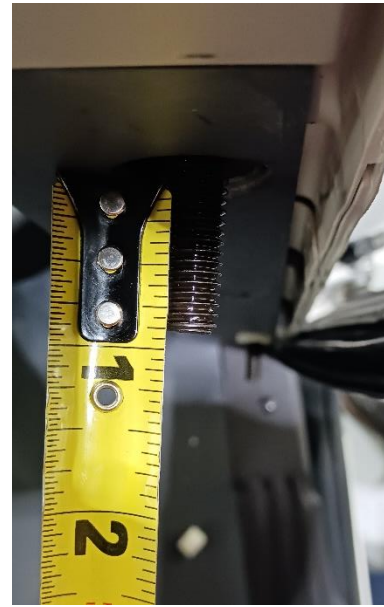


21. Then drill a 1/2" hole into the b-pillar in the center of each 1" b-pillar trim hole.



22. Install (4) 5/16" riv-nut 50903910 into the 1/2" holes.

23. Install (4) 5/16" x 2.5" set screw 30708230 into the riv-nuts, there should be about .75" - .875" of threads outside of the trim.

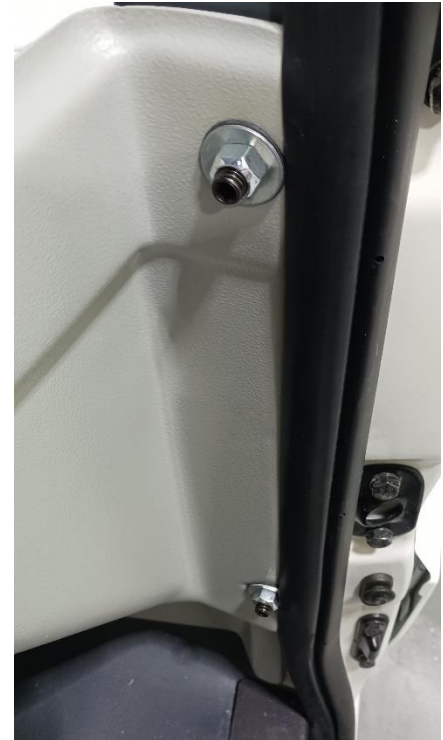


24. Place a spacer .38"ID x .75"OD x .50"L, 33018330, on each of the screws.

25. Place the bulkhead back into the vehicle and install nuts on all (4) carriage bolts on the upper bulkhead brace from step 17.



26. Secure the LH and RH of the bulkhead to the set screws in the b-pillars using (4) .43" x 1" sealing washers, 12051132, and (4) 5/16"-18 flange top lock nuts, 30708270. There should only be 3-4 threads past the end of the nut, so adjust the set screw depth as necessary.



27. Re-install pushpins into the headliner taken out in step 1.



**KNAPHEIDE**  
SINCE 1848

The Knapheide Product Support Center  
1848 Westphalia Strasse | P.O. Box 7140 | Quincy, IL 62305

P: 217-592-5233 | [productsupport@knapheide.com](mailto:productsupport@knapheide.com)