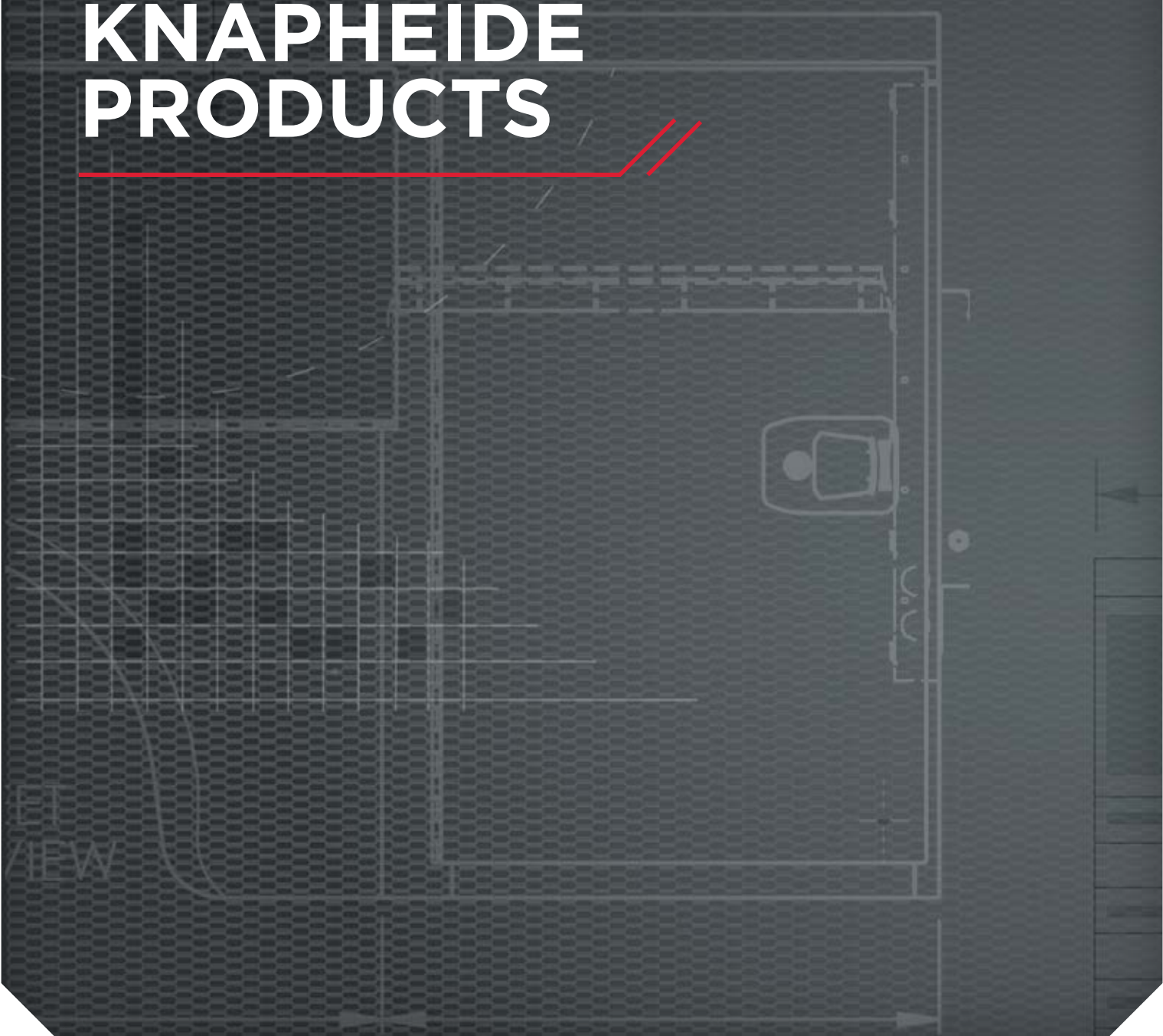


// EXPERTSOLUTIONS

# KNAPHEIDE PRODUCTS

---



**KNAPHEIDE**<sup>®</sup>  
**SINCE 1848**

// MERCEDES-BENZ SPECIFICATIONS

# SERVICE BODY

SPRINTER 144" WB CAB CHASSIS



// With rugged steel construction and external storage for your tools and equipment, the service body is a key component in your day-to-day productivity.

The external compartments offer protection from outside elements and allow technicians to access their equipment without having to climb into the truck bed.

Staying organized both on and between job sites is important. Get maximum efficiency with a Knapheide Service Body.

## SPECIFICATIONS:

**BODY LENGTH:** 11'

**BODY HEIGHT:** 40"

**BODY WIDTH:** 78"

**COMPARTMENT DEPTH:** 14.5"

**BODY WEIGHT:** 1,538 lb.

**INTERIOR CLEAR LENGTH:** 133"

**INTERIOR BED WIDTH:** 48"

**WIDTH BETWEEN WHEEL WELLS:** 37"

## STANDARD FEATURES

- Features 14-gauge, two-sided A-40 galvanized steel shell
- Exclusive "Return Flange" floor design provides support
- Interior light guards protect recessed lighting and wiring
- Continuous stainless steel hinges are pry-proof and corrosion resistant
- Adjustable security ring strikers provide a weather-tight seal
- Includes (11) 250-lb. capacity adjustable divider shelves, with (28) dividers
- Double-spring over-center door retainer eliminates involuntary door swing
- Features double-shell, 20-gauge two-sided A-40 galvanized steel compartment doors
- Automotive-quality, rotary-style latches make opening and closing easy
- Interior cover protects internal latch from damage
- Neoprene door seals protect compartments from the weather
- Quick-mount installation allows for fast, safe mounting
- Includes slam-lock tailgate with one-hand center release
- Electrodeposition prime-paint system provides superior corrosion resistance

// MERCEDES-BENZ SPECIFICATIONS

# SERVICE BODY

SPRINTER 144" WB CAB CHASSIS



// With rugged steel construction and external storage for your tools and equipment, the service body is a key component in your day-to-day productivity.

The external compartments offer protection from outside elements and allow technicians to access their equipment without having to climb into the truck bed.

Staying organized both on and between job sites is important. Get maximum efficiency with a Knapheide Service Body.

## SPECIFICATIONS:

**BODY LENGTH:** 11'  
**BODY HEIGHT:** 46"  
**BODY WIDTH:** 94"  
**COMPARTMENT DEPTH:** 20"  
**BODY WEIGHT:** 1,709 lb.  
**INTERIOR CLEAR LENGTH:** 133"  
**INTERIOR BED WIDTH:** 54"  
**WIDTH BETWEEN WHEEL WELLS:** 37"

## STANDARD FEATURES

- Features 14-gauge, two-sided A-40 galvanized steel shell
- Exclusive "Return Flange" floor design provides support
- Interior light guards protect recessed lighting and wiring
- Continuous stainless steel hinges are pry-proof and corrosion resistant
- Adjustable security ring strikers provide a weather-tight seal
- Includes (11) 250-lb. capacity adjustable divider shelves, with (28) dividers
- Double-spring over-center door retainer eliminates involuntary door swing
- Features double-shell, 20-gauge two-sided A-40 galvanized steel compartment doors
- Automotive-quality, rotary-style latches make opening and closing easy
- Interior cover protects internal latch from damage
- Neoprene door seals protect compartments from the weather
- Quick-mount installation allows for fast, safe mounting
- Includes slam-lock tailgate with one-hand center release
- Electrodeposition prime-paint system provides superior corrosion resistance

// MERCEDES-BENZ SPECIFICATIONS

# SERVICE BODY

SPRINTER 144" WB CAB CHASSIS



// With rugged steel construction and external storage for your tools and equipment, the service body is a key component in your day-to-day productivity.

The external compartments offer protection from outside elements and allow technicians to access their equipment without having to climb into the truck bed.

Staying organized both on and between job sites is important. Get maximum efficiency with a Knapheide Service Body.

## SPECIFICATIONS:

**BODY LENGTH:** 11'

**BODY HEIGHT:** 60"

**BODY WIDTH:** 94"

**COMPARTMENT DEPTH:** 20"

**BODY WEIGHT:** 1,987 lb.

**INTERIOR CLEAR LENGTH:** 133"

**INTERIOR BED WIDTH:** 54"

**WIDTH BETWEEN WHEEL WELLS:** 37"

## STANDARD FEATURES

- Features 14-gauge, two-sided A-40 galvanized steel shell
- Exclusive "Return Flange" floor design provides support
- Interior light guards protect recessed lighting and wiring
- Continuous stainless steel hinges are pry-proof and corrosion resistant
- Adjustable security ring strikers provide a weather-tight seal
- Includes (11) 250-lb. capacity adjustable divider shelves, with (28) dividers
- Double-spring over-center door retainer eliminates involuntary door swing
- Features double-shell, 20-gauge two-sided A-40 galvanized steel compartment doors
- Automotive-quality, rotary-style latches make opening and closing easy
- Interior cover protects internal latch from damage
- Neoprene door seals protect compartments from the weather
- Quick-mount installation allows for fast, safe mounting
- Includes slam-lock tailgate with one-hand center release
- Electrodeposition prime-paint system provides superior corrosion resistance

// MERCEDES-BENZ SPECIFICATIONS

# KUVcc BODY

SPRINTER 144" WB CAB CHASSIS



// The style and function of a KUV, designed for a cab chassis: the KUVcc is built to get the job done.

Providing both enclosed cargo and internal compartment storage, the KUVcc gives you the most efficient and secure storage possible.

Get the use of a truck and function of a KUV all-in-one with the KUVcc

## SPECIFICATIONS:

**BODY LENGTH:** 11'  
**BODY HEIGHT:** 90"  
**BODY WIDTH:** 78"  
**COMPARTMENT DEPTH:** 13"  
**CLEAR DOOR WIDTH:** 45"  
**CLEAR DOOR HEIGHT:** 61"  
**INTERIOR CLEAR HEIGHT:** 70.5"  
**INTERIOR CLEAR LENGTH:** 132"  
**BODY WEIGHT:** 2,323 lb.  
**INTERIOR FLOOR WIDTH:** 48"  
**WIDTH BETWEEN WHEEL WELLS:** 37"  
**OAL:** 246"  
**OAH:** 108"  
**OAW:** 83"

## STANDARD FEATURES

- Double panel rear cargo doors lock and seal into the body frame. These 20-gauge galvanized steel doors have nitrogen gas struts, slam latches
- Two conduit chutes to transport copper pips, PVC, and conduit
- Master Locking System for peace of mind — locks down all of the side compartments in one move
- Includes (11) 250-lb. capacity adjustable divider shelves comprised of spangles galvanized steel, with divider slots on 4" centers and (28) dividers
- Vertical compartment doors employ double-spring over-center retainers for elimination of involuntary swing
- Neoprene door seals protect compartments from the weather
- Continuous stainless steel hinges are pry-proof and corrosion-resistant
- Features 14-gauge, two-sided A-40 galvanized steel shell
- Flat panel space provides rolling billboard to promote business
- Two interior dome lights in cargo area with light switch inside the cargo doors
- Spacious cargo area for transporting oversized tools and equipment
- 9"x30" glass window in front bulkhead positioned to line up with the cab rear window for visibility
- Other features not shown:
- All compartments can be locked independently for maximum security
- Interior light guards provide protection for recessed lighting and wiring package
- Electrodeposition prime-paint system provides superior corrosion resistance
- Complete undercoating provides an additional layer of corrosion protection

// MERCEDES-BENZ SPECIFICATIONS

# KUV BODY

SPRINTER 144" WB CUTAWAY CHASSIS WITH  
LOW ROOF KUV BODY



// Working out of a Knapheide KUV keeps you organized and productive. Large perimeter bins are easy to access and keep your parts and tools separated into easy-to-manage spaces.

The Knapheide KUV is designed to increase productivity and efficiency through better organization of parts and equipment for specialty contractors, including plumbers, HVACR technicians, electricians, and more.

## SPECIFICATIONS:

**BODY LENGTH:** 11'  
**BODY HEIGHT:** 82"  
**BODY WIDTH:** 83"  
**COMPARTMENT DEPTH:** 13"  
**CLEAR DOOR WIDTH:** 49.5"  
**CLEAR DOOR HEIGHT:** 55.5"  
**INTERIOR CLEAR HEIGHT:** 62.5"  
**BODY WEIGHT:** 1,915 lb.  
**INTERIOR CLEAR LENGTH:** 128"  
**INTERIOR FLOOR WIDTH:** 53"  
**WIDTH BETWEEN WHEEL WELLS:** 40"  
**OAL:** 247"  
**OAH:** 102"  
**OAW:** 86"

## STANDARD FEATURES

- Double panel rear cargo doors lock and seal into the body frame. These 20-gauge galvanized steel doors have nitrogen gas struts and slam latches
- Two conduit chutes to transport copper pipes, PVC, and conduit
- Master Locking System for peace of mind — locks down all of the side compartments in one move
- Rear vertical compartment contains (1) 250-lb. capacity adjustable divider shelf
- Vertical compartment doors employ double-spring over-center retainers for elimination of involuntary swing
- Horizontal compartment contains (1) adjustable divider shelf to hold up to 250 lb. (curb side only)
- Neoprene door seals protect compartments from the weather
- Front vertical compartments contain (2) 250-lb. capacity adjustable divider shelves
- Continuous stainless steel hinges are pry-proof and corrosion-resistant
- Automotive-quality, rotary-style latches make opening and closing easy
- Spacious cargo storage area with corrugated steel floor for transporting drywall, larger tools, water heaters, and oversized items
- Refined ABS partition is equipped with a sliding cab access door and window. The door's slam latch can be locked from the cab and secured in either an open or closed position.
- Two interior dome lights in cargo area with light switch inside the cargo doors
- Electrodeposition prime-paint system provides superior corrosion resistance
- Flat panel space provides rolling billboard to promote business
- All compartments can be locked independently for maximum security
- (28) shelf dividers
- Grab handle (rear right)

// MERCEDES-BENZ SPECIFICATIONS

# KUV BODY

SPRINTER 144" WB CUTAWAY CHASSIS WITH HIGH ROOF KUV BODY



// Working out of a Knapheide KUV keeps you organized and productive. Large perimeter bins are easy to access and keep your parts and tools separated into easy-to-manage spaces.

The Knapheide KUV is designed to increase productivity and efficiency through better organization of parts and equipment for specialty contractors, including plumbers, HVACR technicians, electricians, and more.

## SPECIFICATIONS:

**BODY LENGTH:** 11'  
**BODY HEIGHT:** 94"  
**BODY WIDTH:** 83"  
**COMPARTMENT DEPTH:** 13"  
**CLEAR DOOR WIDTH:** 49.5"  
**CLEAR DOOR HEIGHT:** 66"  
**INTERIOR CLEAR HEIGHT:** 74.5"  
**BODY WEIGHT:** 2,115 lb.  
**INTERIOR CLEAR LENGTH:** 128"  
**INTERIOR FLOOR WIDTH:** 54"  
**WIDTH BETWEEN WHEEL WELLS:** 40"  
**OAL:** 247"  
**OAH:** 114"  
**OAW:** 86"

## STANDARD FEATURES

- Double panel rear cargo doors lock and seal into the body frame. These 20-gauge galvanized steel doors have nitrogen gas struts and slam latches
- Two conduit chutes to transport copper pipes, PVC, and conduit
- Master Locking System for peace of mind — locks down all of the side compartments in one move
- Rear vertical compartment contains (1) 250-lb. capacity adjustable divider shelf
- Vertical compartment doors employ double-spring over-center retainers for elimination of involuntary swing
- Horizontal compartment contains (1) adjustable divider shelf to hold up to 250 lb. (curb side only)
- Neoprene door seals protect compartments from the weather
- Front vertical compartments contain (2) 250-lb. capacity adjustable divider shelves
- Continuous stainless steel hinges are pry-proof and corrosion-resistant
- Automotive-quality, rotary-style latches make opening and closing easy
- Spacious cargo storage area with corrugated steel floor for transporting drywall, larger tools, water heaters, and oversized items
- Refined ABS partition is equipped with a sliding cab access door and window. The door's slam latch can be locked from the cab and secured in either an open or closed position
- Two interior dome lights in cargo area with light switch inside the cargo doors
- Electrodeposition prime-paint system provides superior corrosion resistance
- Flat panel space provides rolling billboard to promote business
- All compartments can be locked independently for maximum security
- (28) shelf dividers
- Grab handle (rear right)



// MERCEDES-BENZ SPECIFICATIONS

# BOX TRUCK BODY

SPRINTER 144" WB CHASSIS



// The Specifically designed for the Sprinter Cab Chassis, the Knapheide Box Truck is designed and built to look good and have long-lasting durability.

## SPECIFICATIONS:

**BODY LENGTH:** 12'

**BODY HEIGHT:** 90.5"

**BODY WIDTH:** 90"

**CLEAR DOOR WIDTH:** 82"

**CLEAR DOOR HEIGHT:** 77"

**INTERIOR CLEAR HEIGHT:** 84"

**DOOR CLEAR HEIGHT:** 80"

**INTERIOR CLEAR WIDTH:** 86"

**BODY WEIGHT:** 1,900 lbs.

## STANDARD FEATURES

- Nose Cone for front wind deflection
- T3" I-beam cross members on 16" centered frame structures
- Standard 2x8 pine floor
- Plywood lined inner side walls
- Floors include 12-gauge steel side rails band structure
- Rear frame clip includes a 10-gauge steel threshold and 12-gauge corner posts and headers
- Corner posts reinforced with 12-gauge post filler which adds extra durability
- Headers reinforced with inner brace support
- Roof is standard .032 aluminum with rollover roof edge to deter any possible leaks
- Composite rear door features 10% lighter weight than standard wood doors with zero rot
- LED dome light
- ICC bumper

// MERCEDES-BENZ SPECIFICATIONS

# BOX TRUCK BODY

SPRINTER 144" WB CAB CHASSIS WITH TOMMY GATE G2 LIFTGATE



// Specifically designed for the Sprinter Cab Chassis, the Knapheide Box Truck is design and built to look good and have long-lasting durability.

This package includes the dual-cylinder, parallel-arm design Tommy Gate G2 liftgate. The G2 is versatile, popular, and modern.

## SPECIFICATIONS:

**BODY LENGTH:** 12'

**BODY HEIGHT:** 84"

**BODY WIDTH:** 90"

**CLEAR DOOR WIDTH:** 82"

**CLEAR DOOR HEIGHT:** 77"

**INTERIOR CLEAR HEIGHT:** 84"

**BODY WEIGHT:** 2,461 lbs.

## STANDARD FEATURES

- Nose Cone for front wind deflection
- 3" I-beam cross members on 16" centered frame structures
- Standard 2x8 pine floor
- Plywood lined inner side walls
- Floors include 12-gauge steel side rails band structure
- Rear frame clip includes a 10-gauge steel threshold and 12-gauge corner posts and headers
- Corner posts reinforced with 12-gauge post filler which adds extra durability
- Headers reinforced with inner brace support
- Roof is standard .032 aluminum with rollover roof edge to deter any possible leaks
- Composite rear door features 10% lighter weight than standard wood doors with zero rot
- LED dome light
- ICC bumper
- Tommy Gate G2 Liftgate with a 1,600-lb. capacity, steel frame, aluminum 80"x37" platform

// MERCEDES-BENZ SPECIFICATIONS

# BOX TRUCK BODY

SPRINTER 144" WB CAB CHASSIS WITH A TOMMY GATE RAILGATE



// Specifically designed for the Sprinter Cab Chassis, the Knapheide Box Truck is design and built to look good and have long-lasting durability.

This package includes the Tommy Gate Dock-friendly Railgate. This Railgate offers a level-ride liftgate ideal for handling heavy, sensitive, wheel-based cargo.

## SPECIFICATIONS:

**BODY LENGTH:** 12'

**BODY HEIGHT:** 84"

**BODY WIDTH:** 90"

**CLEAR DOOR WIDTH:** 82"

**CLEAR DOOR HEIGHT:** 77"

**INTERIOR CLEAR HEIGHT:** 84"

**BODY WEIGHT:** 2,595 lbs.

## STANDARD FEATURES

- Nose Cone for front wind deflection
- 3" I-beam cross members on 16" centered frame structures
- Standard 2x8 pine floor
- Plywood lined inner side walls
- Floors include 12-gauge steel side rails band structure
- Rear frame clip includes a 10-gauge steel threshold and 12-gauge corner posts and headers
- Corner posts reinforced with 12-gauge post filler which adds extra durability
- Headers reinforced with inner brace support
- Roof is standard .032 aluminum with rollover roof edge to deter any possible leaks
- Composite rear door features 10% lighter weight than standard wood doors with zero rot.
- LED dome light
- ICC bumper
- Tommy Gate Dock-friendly Railgate with a 1,600-lb. capacity, steel frame, aluminum 85"x50" folding platform

// MERCEDES-BENZ SPECIFICATIONS

# BOX VAN BODY

SPRINTER 144" WB CUTAWAY CHASSIS



// Specifically designed for the Sprinter Cutaway Chassis, the Knapheide Box Truck is design and built to look good and have long-lasting durability.

## SPECIFICATIONS:

**BODY LENGTH:** 12'

**BODY HEIGHT:** 84"

**BODY WIDTH:** 90"

**CLEAR DOOR WIDTH:** 82"

**CLEAR DOOR HEIGHT:** 77"

**INTERIOR CLEAR HEIGHT:** 84"

**BODY WEIGHT:** 1,900 lbs.

## STANDARD FEATURES

- Nose Cone for front wind deflection
- 3" I-beam cross members on 16" centered frame structures
- Standard 2x8 pine floor
- ABS sliding door partition
- Plywood lined inner side walls
- Floors include 12-gauge steel side rails band structure
- Rear frame clip includes a 10-gauge steel threshold and 12-gauge corner posts and headers
- Corner posts reinforced with 12-gauge post filler which adds extra durability
- Headers reinforced with inner brace support
- Roof is standard .032 aluminum with rollover roof edge to deter any possible leaks
- Composite rear door features 10% lighter weight than standard wood doors with zero rot.
- LED dome light

// MERCEDES-BENZ SPECIFICATIONS

# VALUE-MASTER X PLATFORM BODY

SPRINTER 144" WB CAB CHASSIS ON PVMX 12' BODY



// Need a versatile platform body that can haul just about anything?

Knapheide's Value-Master X Platform Body features solid steel construction and proven durability.

For all of your hauling the Value-Master X Platform Body from Knapheide has you covered.

## SPECIFICATIONS:

**BODY LENGTH:** 12'3"

**BODY HEIGHT:** 5"

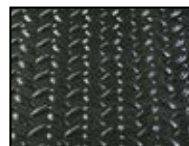
**BODY WIDTH:** 79"

**BODY WEIGHT:** 848 lbs.

## STANDARD FEATURES

- Wood floor: 2" nominal treated #1 grade dense yellow pine with tongue and groove construction
- 5" structural long sills with gusseted cross members
- Formed, 11-gauge high strength (50,000 psi) cross members are spaced on 18" centers
- Side and end rails constructed of formed 12-gauge high strength steel (50,000 psi)
- Reinforced internal stake pockets are sized to accept 2"x4" lumber as well as a wide array of Knapheide side options
- All clearance and marker lights meet FMVSS 108 requirements
- Water-based undercoating on underside of platform
- Durable, over-cured high gloss black finish top coat
- Electrodeposition prime-paint system provides superior corrosion resistance
- Rectangular drop-in style bulkhead features punched window compatible with stake racks
- Underbody toolbox (TBU) 30" length is located on the front street side of the platform

## FLOORING OPTIONS



TREADPLATE  
FLOORING



STEEL  
FLOORING

// MERCEDES-BENZ SPECIFICATIONS

# VALUE-MASTER X PLATFORM BODY

SPRINTER 144" WB CAB CHASSIS ON PVMX 12' BODY WITH LANDSCAPE RACKS



// Need a versatile platform body that can haul just about anything?

Knapheide's Value-Master X Platform Body with removable landscape racks features solid steel construction and proven durability.

For all of your hauling the Value-Master X Platform Body with landscape racks from Knapheide has you covered.

## SPECIFICATIONS:

**BODY LENGTH:** 12'3"

**BODY HEIGHT:** 45"

**BODY WIDTH:** 79"

**BODY WEIGHT:** 1,334 lb.

## STANDARD FEATURES

- Wood floor: 2" nominal treated #1 grade dense yellow pine with tongue and groove construction
- 5" structural long sills with gusseted cross members
- Formed, 11-gauge high strength (50,000 psi) cross members are spaced on 18" centers
- Side and end rails constructed of formed 12-gauge high strength steel (50,000 psi)
- Reinforced internal stake pockets are sized to accept 2"x4" lumber as well as a wide array of Knapheide side options
- All clearance and marker lights meet FMVSS 108 requirements
- Water-based undercoating on underside of platform
- Durable, over-cured high gloss black finish top coat
- Electrodeposition prime-paint system provides superior corrosion resistance
- Rectangular drop-in style bulkhead features punched window compatible with stake racks
- Underbody toolbox (TBU) 30" length is located on the front street side of the platform
- Knapheide Landscape Racks are made of galvanneal steel and can turn virtually any Knapheide Platform into a landscape body. Rack height is 40" and have our simple quiet latch connection systems. Racks are sheeted and punched for material hauling with ventilation.

// MERCEDES-BENZ SPECIFICATIONS

# VALUE-MASTER X PLATFORM BODY

SPRINTER 144" WB CAB CHASSIS ON PVMX 12' BODY WITH STAKE RACKS



// Need a versatile platform body that can haul just about anything?

Knapheide's Value-Master X Platform Body with removable stake racks features solid steel construction and proven durability.

For all of your hauling, the Value-Master X Platform Body with stake racks from Knapheide has you covered.

## SPECIFICATIONS:

**BODY LENGTH:** 12'3"

**BODY HEIGHT:** 45"

**BODY WIDTH:** 79"

**BODY WEIGHT:** 1,299 lb.

## STANDARD FEATURES

- Wood floor: 2" nominal treated #1 grade dense yellow pine with tongue and groove construction
- 5" structural long sills with gusseted cross members
- Formed, 11-gauge high strength (50,000 psi) cross members are spaced on 18" centers
- Side and end rails constructed of formed 12-gauge high strength steel (50,000 psi)
- Reinforced internal stake pockets are sized to accept 2"x4" lumber as well as a wide array of Knapheide side options
- All clearance and marker lights meet FMVSS 108 requirements
- Water-based undercoating on underside of platform
- Durable, over-cured high gloss black finish top coat
- Electrodeposition prime-paint system provides superior corrosion resistance
- Rectangular drop-in style bulkhead features punched window compatible with stake racks
- Underbody toolbox (TBU) 30" length is located on the front street side of the platform
- Knapheide Stake Racks are made of galvanized steel and can turn virtually any Knapheide Platform into a stake body. Stake height is 40" and have our simple quiet latch connection systems.

\* Stakes are also available in 28" height

// MERCEDES-BENZ SPECIFICATIONS

# LANDSCAPER BODY

SPRINTER 144" WB CAB CHASSIS



// The function and versatility of the Knapheide Landscaper Body is specifically designed for the needs of the landscape contractor. Built with the quality and strength of a Knapheide Platform Body, the versatile Landscaper Body has everything you need to get the job done.

## SPECIFICATIONS:

**BODY LENGTH:** 12'

**BODY HEIGHT:** 90"

**SIDE & REAR HEIGHT:** 40"

**BODY WEIGHT:** 2,900 lbs.

**HOIST CAPACITY:** 8 tons

## STANDARD FEATURES

- Side access door on curb side has 50" wide opening for pallets, balled trees, shrubs, bagged materials, etc. Side access door can be locked in the open position.
- Step and grab handle for the side access door for easy access to the cargo area
- Bolt-on, reinforced bulkhead pre-punched to accept cab guard and tarp options
- Swing-out rear gates are on heavy duty hinges, and have ability to secure to side panels
- Rear gates are punched for proper air flow through bed space
- Heavy duty cam lock on rear gates for long-term durability
- G 40" tall sides panels are constructed of 14-gauge steel and reinforced by 13-gauge steel stakes. Side panels include tarp tie-down rail.
- All LED clearance and marker lights
- Clearance lights and an automotive wire harness included with body
- Floor assembly is constructed of 10-gauge high strength steel floor plate with 10-gauge formed cross sills and 5" structural long sills
- Material tie-down brackets are located in both front corners of cargo area
- Bodies are fully protected with Knapheide's water-based self-healing undercoat
- Electrodeposition prime-paint system provides superior corrosion resistance



// MERCEDES-BENZ SPECIFICATIONS

# DUMP BODY

SPRINTER 144" WB CAB CHASSIS



// The Knapheide Dump Body is where style, versatility and durability come together. When landscape or general contractors need a productive dump body that will last a lifetime, they choose the Knapheide Dump Body every time.

## SPECIFICATIONS:

**BODY LENGTH:** 12'

**BODY HEIGHT:** 90"

**DROP SIDE HEIGHT:** 12"

**YARDAGE CAPACITY:** 3.5 cubic yards

**BODY WEIGHT:** 1,600 lbs.

**HOIST CAPACITY:** 8 tons

## STANDARD FEATURES

- Sides and tailgate feature self-cleaning sloped top rails and lower rails
- Sides are constructed of 12-gauge high tensile steel
- 2x6 side board pockets on the sides at the front and rear allow for increased load capacity
- Versatile, double acting tailgate in order to accommodate both drop-down and pick-up style and spreader applications
- Quick release, one-handed lever for easy drop-down action on the tailgate
- Toe saver brackets located on both sides of the end rail for operator safety
- Rear corner posts equipped with a hook on each side for an optional tarp
- Quarter cab protector constructed of 10-gauge high tensile steel with a punched window for visibility
- Double panel tailgate construction with 12-gauge HY50 outer panel and 10-gauge HY50 inner panel
- Crossmemberless models (shown in photo) feature fully boxed long sills constructed of 7-gauge HRCQ steel and run the entire length of the floor // Stacked crossmember models feature 3" structural steel cross sills with 6" structural long sills
- Crossmemberless models feature two-piece 7-gauge HRCQ steel floor with full seam weld down the center // Stacked crossmember models feature two-piece 10-gauge HRCQ steel floor with full seam weld down the center
- Electrodeposition prime-paint system provides superior corrosion resistance
- Bodies are fully protected with Knapheide's water-based undercoat

// MERCEDES-BENZ SPECIFICATIONS

# BOX TRUCK BODY

SPRINTER 170" WB CHASSIS



// The Specifically designed for the Sprinter Cab Chassis, the Knapheide Box Truck is designed and built to look good and have long-lasting durability.

## SPECIFICATIONS:

**BODY LENGTH:** 14' or 16'

**BODY HEIGHT:** 90.5"

**BODY WIDTH:** 90"

**CLEAR DOOR WIDTH:** 82"

**CLEAR DOOR HEIGHT:** 77"

**INTERIOR CLEAR HEIGHT:** 84"

**DOOR CLEAR HEIGHT:** 80"

**INTERIOR CLEAR WIDTH:** 86"

**BODY WEIGHT:** 1,900 lbs.

## STANDARD FEATURES

- Nose Cone for front wind deflection
- T3" I-beam cross members on 16" centered frame structures
- Standard 2x8 pine floor
- Plywood lined inner side walls
- Floors include 12-gauge steel side rails band structure
- Rear frame clip includes a 10-gauge steel threshold and 12-gauge corner posts and headers
- Corner posts reinforced with 12-gauge post filler which adds extra durability
- Headers reinforced with inner brace support
- Roof is standard .032 aluminum with rollover roof edge to deter any possible leaks
- Composite rear door features 10% lighter weight than standard wood doors with zero rot
- LED dome light
- ICC bumper

// MERCEDES-BENZ SPECIFICATIONS

# BOX TRUCK BODY

SPRINTER 170" WB CAB CHASSIS WITH TOMMY GATE G2 LIFTGATE



// Specifically designed for the Sprinter Cab Chassis, the Knapheide Box Truck is design and built to look good and have long-lasting durability.

This package includes the dual-cylinder, parallel-arm design Tommy Gate G2 liftgate. The G2 is versatile, popular, and modern.

## SPECIFICATIONS:

**BODY LENGTH:** 14'

**BODY HEIGHT:** 84"

**BODY WIDTH:** 90"

**CLEAR DOOR WIDTH:** 82"

**CLEAR DOOR HEIGHT:** 77"

**INTERIOR CLEAR HEIGHT:** 84"

**BODY WEIGHT:** 2,641 lbs.

## STANDARD FEATURES

- Nose Cone for front wind deflection
- 3" I-beam cross members on 16" centered frame structures
- Standard 2x8 pine floor
- Plywood lined inner side walls
- Floors include 12-gauge steel side rails band structure
- Rear frame clip includes a 10-gauge steel threshold and 12-gauge corner posts and headers
- Corner posts reinforced with 12-gauge post filler which adds extra durability
- Headers reinforced with inner brace support
- Roof is standard .032 aluminum with rollover roof edge to deter any possible leaks
- Composite rear door features 10% lighter weight than standard wood doors with zero rot
- LED dome light
- ICC bumper
- Tommy Gate G2 Liftgate with a 1,600-lb. capacity, steel frame, aluminum 80"x37" platform

// MERCEDES-BENZ SPECIFICATIONS

# BOX TRUCK BODY

SPRINTER 170" WB CAB CHASSIS WITH A TOMMY GATE RAILGATE



// Specifically designed for the Sprinter Cab Chassis, the Knapheide Box Truck is design and built to look good and have long-lasting durability.

This package includes the Tommy Gate Dock-friendly Railgate. This Railgate offers a level-ride liftgate ideal for handling heavy, sensitive, wheel-based cargo.

## SPECIFICATIONS:

**BODY LENGTH:** 14'

**BODY HEIGHT:** 84"

**BODY WIDTH:** 90"

**CLEAR DOOR WIDTH:** 82"

**CLEAR DOOR HEIGHT:** 77"

**INTERIOR CLEAR HEIGHT:** 84"

**BODY WEIGHT:** 2,775 lbs.

## STANDARD FEATURES

- Nose Cone for front wind deflection
- 3" I-beam cross members on 16" centered frame structures
- Standard 2x8 pine floor
- Plywood lined inner side walls
- Floors include 12-gauge steel side rails band structure
- Rear frame clip includes a 10-gauge steel threshold and 12-gauge corner posts and headers
- Corner posts reinforced with 12-gauge post filler which adds extra durability
- Headers reinforced with inner brace support
- Roof is standard .032 aluminum with rollover roof edge to deter any possible leaks
- Composite rear door features 10% lighter weight than standard wood doors with zero rot.
- LED dome light
- ICC bumper
- Tommy Gate Dock-friendly Railgate with a 1,600-lb. capacity, steel frame, aluminum 85"x50" folding platform

// MERCEDES-BENZ SPECIFICATIONS

# BOX VAN BODY

SPRINTER 170" WB CUTAWAY CHASSIS



// Specifically designed for the Sprinter Cutaway Chassis, the Knapheide Box Truck is design and built to look good and have long-lasting durability.

## SPECIFICATIONS:

**BODY LENGTH:** 14' or 16'

**BODY HEIGHT:** 84"

**BODY WIDTH:** 90"

**CLEAR DOOR WIDTH:** 82"

**CLEAR DOOR HEIGHT:** 77"

**INTERIOR CLEAR HEIGHT:** 84"

**BODY WEIGHT:** 2,080 lbs. (14')

2,260 lbs. (16')

## STANDARD FEATURES

- Nose Cone for front wind deflection
- 3" I-beam cross members on 16" centered frame structures
- Standard 2x8 pine floor
- ABS sliding door partition
- Plywood lined inner side walls
- Floors include 12-gauge steel side rails band structure
- Rear frame clipo includes a 10-gauge steel threshold and 12-gauge corner posts and headers
- Corner posts reinforced with 12-gauge post filler which adds extra durability
- Headers reinforced with inner brace support
- Roof is standard .032 aluminum with rollover roof edge to deter any possible leaks
- Composite rear door features 10% lighter weight than standard wood doors with zero rot.
- LED dome light
- ICC bumper

// MERCEDES-BENZ SPECIFICATIONS

# VALUE-MASTER X PLATFORM BODY

SPRINTER 170" WB CAB CHASSIS ON PVMX 14' BODY



// Need a versatile platform body that can haul just about anything?

Knapheide's Value-Master X Platform Body features solid steel construction and proven durability.

For all of your hauling the Value-Master X Platform Body from Knapheide has you covered.

## SPECIFICATIONS:

**BODY LENGTH:** 14'3"

**BODY HEIGHT:** 5"

**BODY WIDTH:** 79"

**BODY WEIGHT:** 913 lbs.

## STANDARD FEATURES

- Wood floor: 2" nominal treated #1 grade dense yellow pine with tongue and groove construction
- 5" structural long sills with gusseted cross members
- Formed, 11-gauge high strength (50,000 psi) cross members are spaced on 18" centers
- Side and end rails constructed of formed 12-gauge high strength steel (50,000 psi)
- Reinforced internal stake pockets are sized to accept 2"x4" lumber as well as a wide array of Knapheide side options
- All clearance and marker lights meet FMVSS 108 requirements
- Water-based undercoating on underside of platform
- Durable, over-cured high gloss black finish top coat
- Electrodeposition prime-paint system provides superior corrosion resistance
- Rectangular drop-in style bulkhead features punched window compatible with stake racks
- Underbody toolbox (TBU) 30" length is located on the front street side of the platform

## FLOORING OPTIONS



TREADPLATE  
FLOORING



STEEL  
FLOORING

// MERCEDES-BENZ SPECIFICATIONS

# VALUE-MASTER X PLATFORM BODY

SPRINTER 170" WB CAB CHASSIS ON PVMX 14' BODY WITH LANDSCAPE RACKS



// Need a versatile platform body that can haul just about anything?

Knapheide's Value-Master X Platform Body with removable landscape racks features solid steel construction and proven durability.

For all of your hauling the Value-Master X Platform Body with landscape racks from Knapheide has you covered.

## SPECIFICATIONS:

**BODY LENGTH:** 14'3"

**BODY HEIGHT:** 45"

**BODY WIDTH:** 79"

**BODY WEIGHT:** 1,443 lb.

## STANDARD FEATURES

- Wood floor: 2" nominal treated #1 grade dense yellow pine with tongue and groove construction
- 5" structural long sills with gusseted cross members
- Formed, 11-gauge high strength (50,000 psi) cross members are spaced on 18" centers
- Side and end rails constructed of formed 12-gauge high strength steel (50,000 psi)
- Reinforced internal stake pockets are sized to accept 2"x4" lumber as well as a wide array of Knapheide side options
- All clearance and marker lights meet FMVSS 108 requirements
- Water-based undercoating on underside of platform
- Durable, over-cured high gloss black finish top coat
- Electrodeposition prime-paint system provides superior corrosion resistance
- Rectangular drop-in style bulkhead features punched window compatible with stake racks
- Underbody toolbox (TBU) 30" length is located on the front street side of the platform
- Knapheide Landscape Racks are made of galvanized steel and can turn virtually any Knapheide Platform into a landscape body. Rack height is 40" and have our simple quiet latch connection systems. Racks are sheeted and punched for material hauling with ventilation.

// MERCEDES-BENZ SPECIFICATIONS

# VALUE-MASTER X PLATFORM BODY

SPRINTER 170" WB CAB CHASSIS ON PVMX 14' BODY WITH STAKE RACKS



// Need a versatile platform body that can haul just about anything?

Knapheide's Value-Master X Platform Body with removable stake racks features solid steel construction and proven durability.

For all of your hauling, the Value-Master X Platform Body with stake racks from Knapheide has you covered.

## SPECIFICATIONS:

**BODY LENGTH:** 14'3"

**BODY HEIGHT:** 45"

**BODY WIDTH:** 79"

**BODY WEIGHT:** 1,420 lb.

## STANDARD FEATURES

- Wood floor: 2" nominal treated #1 grade dense yellow pine with tongue and groove construction
- 5" structural long sills with gusseted cross members
- Formed, 11-gauge high strength (50,000 psi) cross members are spaced on 18" centers
- Side and end rails constructed of formed 12-gauge high strength steel (50,000 psi)
- Reinforced internal stake pockets are sized to accept 2"x4" lumber as well as a wide array of Knapheide side options
- All clearance and marker lights meet FMVSS 108 requirements
- Water-based undercoating on underside of platform
- Durable, over-cured high gloss black finish top coat
- Electrodeposition prime-paint system provides superior corrosion resistance
- Rectangular drop-in style bulkhead features punched window compatible with stake racks
- Underbody toolbox (TBU) 30" length is located on the front street side of the platform
- Knapheide Stake Racks are made of galvanized steel and can turn virtually any Knapheide Platform into a stake body. Stake height is 40" and have our simple quiet latch connection systems.

\* Stakes also available in 28" height





**KNAPHEIDE**  
**SINCE 1848**

// KNAPHEIDE

# PRODUCT SUMMARY



SERVICE BODY



PVMX PLATFORM BODY



PVMX WITH STAKE RACKS



PVMX WITH LANDSCAPE RACKS



DUMP BODY



KUVcc BODY



KUV BODY



BOX TRUCK BODY



BOX TRUCK BODY WITH LIFTGATE



BOX TRUCK BODY WITH RAILGATE

# KNAPHEIDE<sup>®</sup>

**SINCE 1848**

If you are going to be a leader, it takes more than building a high-quality product. It means never being totally satisfied with that product, no matter how high quality it may be. It requires constant vigilance and a willingness to take a chance on something new. And it means exceeding expectations every time. As the industry changes, one thing never will—our commitment to making customers like you as productive and efficient as possible. We know you don't settle, and we don't either. That's why we want you never to settle for anything less than Knapheide on the back of your truck.

**KNAPHEIDE. NEVER SETTLE.**

